

Maximizing Access and Success for Special Populations: Collaborative Strategies

ACTE & Advance CTE

May 14, 2024

Agenda

Introduction to the series

Challenges in collaboration to support special populations

Considerations for collaboration to support special populations

Case studies from South Carolina and Aldine ISD, Texas

Q&A

Guest Panelists



Anna Duvall

Team Lead, Office of CTE and Student
Transition Services
South Carolina Department of
Education



Maria Swygert

Team Lead, Office of CTE and
Student Transition Services
South Carolina Department of
Education

Guest Panelists



Altagracia (Grace) Delgado
Executive Director of Multilingual
Services
Aldine Independent School District (TX)

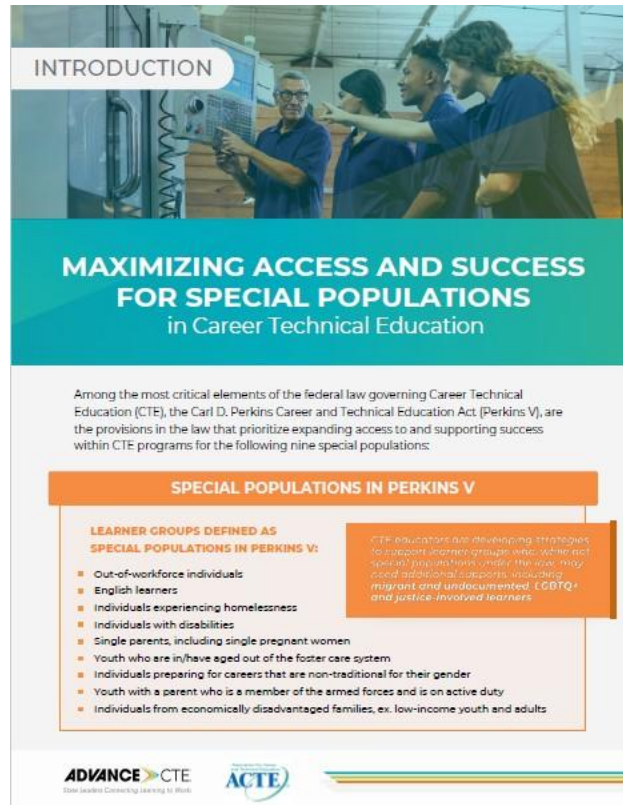


Brooke Martin
Executive Director of Career and
Technical Education
Aldine Independent School District (TX)

Communicating During Today's Webinar

- **Q&A:** Please ask questions of the panelists or requests for tech support using the Q&A feature
- **Chat:** Please share your strategies and successes and network with your colleagues using the Chat feature

Brief Series



- Introduction
- 13 briefs on special populations and other underserved learner groups
- Definitions, strategies and examples

Webinar Series

Webinar Topic	Date/Time
Wraparound supports	August 13 2pm Eastern
Instructional supports	September 10 2pm Eastern
Accelerated and flexible learning	October 8 2pm Eastern
Career exploration and planning	November 12 2pm Eastern

Special Populations

Individuals with disabilities

Individuals from economically disadvantaged families, including low-income youth and adults

Individuals preparing for non-traditional fields

Single parents, including single pregnant women

Out-of-workforce individuals

English learners

Individuals experiencing homelessness

Youth who are in, or have aged out of, the foster care system

Youth with a parent who is a member of the armed forces and is on active duty

Other Learner Groups

Justice-involved learners

LGBTQ+ learners

Migrant and undocumented learners

Tribal learners and communities

Challenges

- Time!
- Staff turnover
- Different priorities and languages
- Policy limitations

Topic Areas

- Data sharing
- Professional development
- Instructional services
- Wraparound services
- Counseling and advising
- Career exploration and work-based learning

Potential Collaboration Partners

- Other departments/agencies
- Nonprofit partners
- Employer partners
- Interchanges

Considerations

Building trust

Ensuring sustainability

Providing mutual benefits

Avoiding duplication

Braiding funding

Leveraging the CLNA and state planning

Leveraging intersectional identities

CASE STUDY: South Carolina

Collaboration among CTE,
transition services special
education and VR

CASE STUDY: Aldine ISD, Texas

Collaboration among CTE and
multilingual services

Empowering Learners:

Challenges and Successes for Forming Collaborative Relationships



May 14, 2024

SC Palmetto Pathways

“Children should be defined by their capability, not their disability, and we believe in the incredible potential of every student.”

*State Superintendent of
Education Ellen Weaver*

Anna Duvall

Team Lead, Office of Career and Technical
Education & Student Transition Services
South Carolina Department of Education
aduvall@ed.sc.gov

Maria Swygert

Team Lead, Office of Career and Technical
Education & Student Transition Services
South Carolina Department of Education
nmswyger@ed.sc.gov



OFFICE CAREER & TECHNICAL EDUCATION & STUDENT TRANSITION SERVICES

CTE & STS



```
graph TD; CTE_STS[CTE & STS] --> CTE_Programing[CTE Programing]; CTE_STS --> CTE_Administration[CTE Administration]; CTE_STS --> School_Counseling[School Counseling]; CTE_Programing --> HQTSDS[High Quality Program Development and Structure]; CTE_Programing --> HQTMS[High Quality Program Management and Support]; CTE_Administration --> HQDA[High Quality Data & Accountability]; CTE_Administration --> HQCTF[High Quality CTE Funding]; School_Counseling --> HQCAL[High Quality Career Advisement & Work-based Learning]; School_Counseling --> HQAA[High Quality Academic Accountability];
```

CTE Programing

High Quality Program
Development and
Structure

High Quality Program
Management and
Support

CTE Administration

High Quality
Data & Accountability

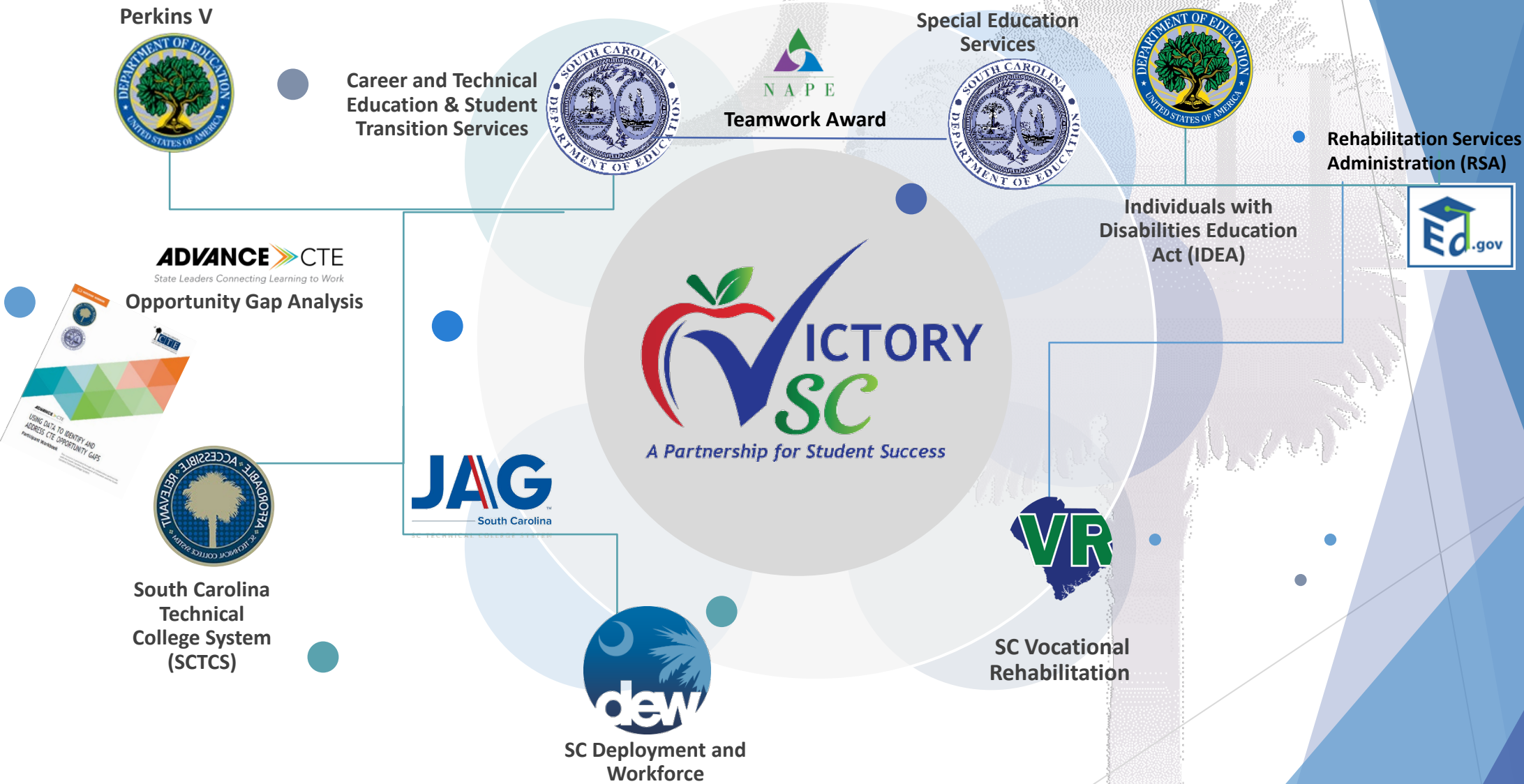
High Quality
CTE Funding

School Counseling

High Quality
Career Advisement
& Work-based
Learning

High Quality
Academic
Accountability

SC Palmetto Pathways Partnerships



A Partnership to Build a Plan



2018-20

SC State Regulation 43-235.
Employability Credential for
Students with Disabilities

The Strengthening Career
and Technical Education for
the 21st Century Act
(Perkins V) and CLNA



2021-22

Advance CTE
Opportunity Gap
Analysis Partnership
and Equity Deep-
Dive
JAG-SC becomes
part of the State
System and doubles
participation rate.



2022-23

VictorySC
partnership
formalized from
partnership in Gaps
analysis and CLNA

NAPE Teamwork
Award



2022-23

SCDE OSES and CTE
begin developing
19-unit
Academically
Challenging Enhance
Learning high school
Diploma



2023-24

SC Palmetto
Pathways
Partnership Award
from USED
Rehabilitation
Services
Administration (RSA)





The South Carolina High School Employability Credential offers applicable students with disabilities the opportunity to work towards a uniform, state-recognized credential.

The purpose of the South Carolina High School Employability Credential is to provide job-readiness opportunities for students throughout the state, ensure they have evidence of employability skills, and honor the work they have undertaken in our public schools.

GOAL: Create a SC High School Credential and CTE WBL Crosswalk utilizing common language.

[A Guide to Work Experiences](#)

What is VICTORY SC?

Valuable Impact
through Community
Training:
Occupational
Readiness for Youth



A Partnership for Student Success

What is the Purpose of VICTORY SC?

VICTORY SC is a **collaborative** effort between LEAs the South Carolina Vocational Rehabilitation Department, with support from and SCDE's Office of Special Education Services and the Office of Career Technology Education.

The goal is to provide services designed to increase career readiness aligned to the South Carolina Accountability Standards and promote improvement as reflected on LEA school report cards.



Our State Strategies

Start the Conversation / Speak the Same Language:

...“A Coke and a smile” ...

- Identify the Key Players
- Know the CTE course offerings and program information.
- Know the difference and similarities in language.
- Have someone fluent in data connections.
- Identify common barriers that lead to low CTE rates.
- Talk about everyone’s “fears”.
- List solutions to those “fears” within your control.
- Locate all resources.
- See the Big Picture..... Bring refreshments!



Our State Strategies

1. Strengthen **interagency collaboration** to maximize resources, address inequities and streamline CTE service provision
2. Utilize federal funding to **leverage and provide technology** to expand access to CTE for SWDs

By braiding the support mechanisms provided in Strengthening Career and Technical Education for the 21st Century Act (Perkins V), Individuals with Disabilities Education Act (IDEA), Every Student Succeeds Act (ESSA) and WIOA the state is facilitating an education-to-workforce pipeline that provides all individuals with the academic, technical, and employability skills they need to be successful in the workforce.



Our State Strategies

3. Increase CTE instructors' capacity to serve SWDs, through **professional development** opportunities

Utilizing the Comprehensive Local Needs Assessment (CLNA) data, local plan information, Perkins V performance, student interviews, and training the VictorySC Taskforce helps district counselors and faculty to connect students with institutions of higher education or businesses in their local community.

The SCDE offers a range of resources to support educators (including CTE educators), including a resource list of professional development opportunities to support SWDs to include:

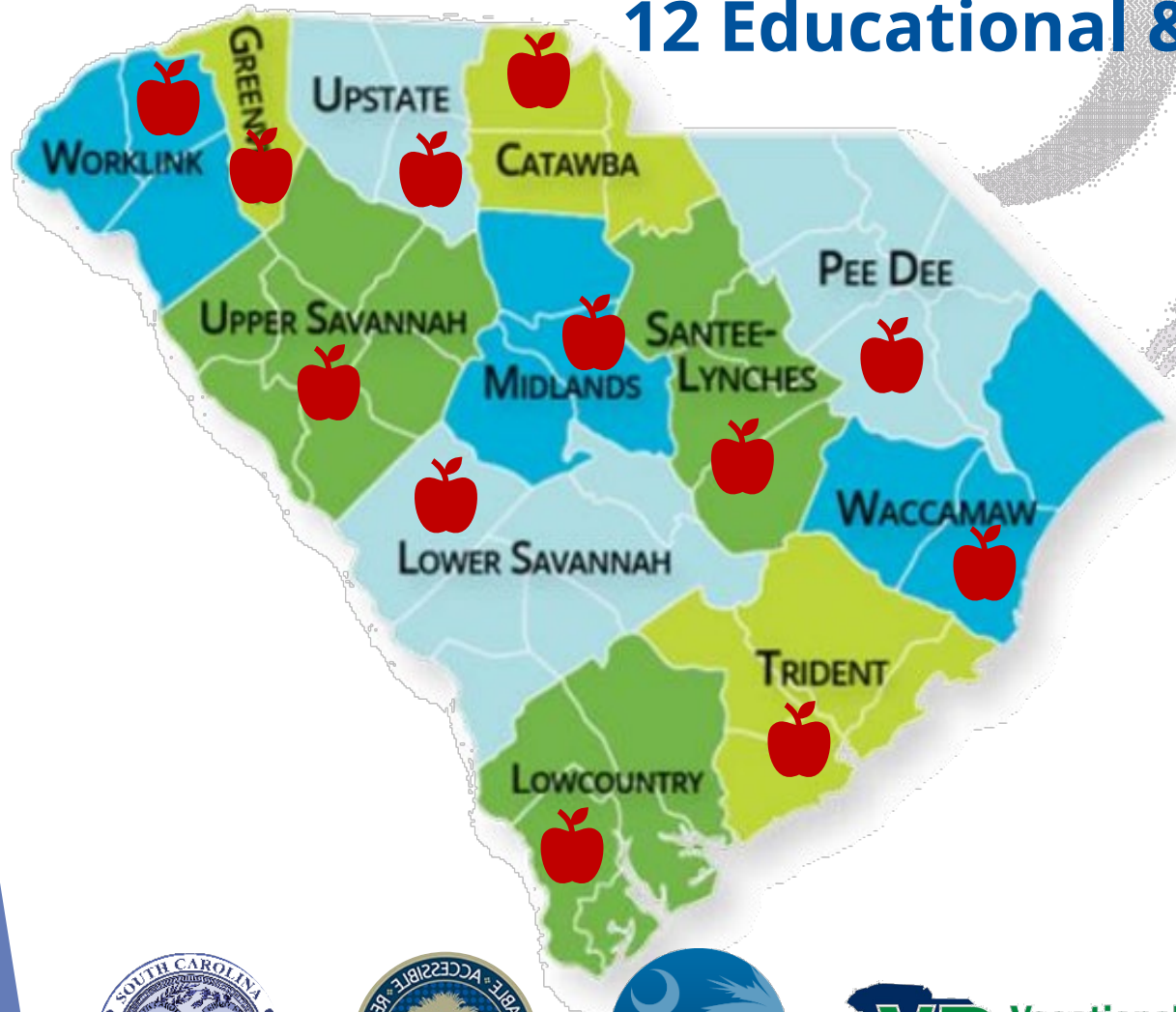
A statewide training series is provided for counselors on topics related to college and career readiness support for special populations.

The annual Education and Business Summit has a track dedicated to professional development for special population students and students with disability educators, counselors, and administrators.



CLNA Regional Approach

12 Educational & Workforce Regions



Each Region has:

- *Community Ecosystem*
- *Job Training*
- *Secondary Education*
- *Post-secondary Education*
- *Workforce Advisory*
- *Targeted Services*
- *Youth Resources*
- *Workforce Investment*



VictorySC Taskforce visits to date



Our State Strategies

4. Improve **data collection** efforts to identify and address CTE access challenges for SWDs

South Carolina annually identifies gaps in CTE enrollment, completion and post-program outcomes by analyzing Perkins special population data. The SCDE looks at school-level, program-level and state-level data for each subgroup and special population. Subgroup data are compared to the general student population to ascertain whether enrollment and performance for certain learners, including learners with disabilities, deviate significantly from the expectation.

When inequities are identified, a structured protocol is set into action. Opportunity Gaps are identified to develop models of support.



OUTCOMES AND MEASUREMENTS

“ Benchmarks that monitor and assess academic, technical, and employability skills of the student”

Measures of Post-Secondary Success (CTE)

- High School Graduation
- Post-Secondary Enrollment / Job Placement
- Industry Certification
- Persistence in Post-Secondary Pathways

Measures of Post-Secondary Success (SPED)

- Enrolled in IHE / Career Tech (2-4 Year Degree)
- Job Placement / Military Service
- Apprenticeship / On the job training
- Job Corps
- Workforce Development Program
- Adult Education (IDEA)

On-Track Indicators

- Attendance
- Positive Behavior / Soft Skills
- Course Performance / Completion
- Schedule Alignment to Pathway

Data Collection

- Data Sharing (SCDE - VR)
- CTE Dashboard
- Graduation
- Dropout
- Indicator 14 Survey Collection
- Perkins Indicators
- Comprehensive Local Needs Assessment (Perkins V)
- Skills Gains and Dual Credit as needed by VR

Our State Strategies

4. Improve **data collection** efforts to identify and address CTE access challenges for SWDs

SCDE uses a partnership approach to performance management, opting for a collaborative conversation with district and school-based staff. SCDE staff provide district leaders with data reports that illuminate specific gaps in enrollment and performance for learners with disabilities and other populations.

The SCDE and district staff collectively develop a report summarizing the findings of the study. The report includes commendations, recommendations, compliance issues, and nextsteps for closing equity gaps. The report also highlights opportunities for local leaders to co-invest with the state in trainings, tool development and other interventions to support underenrolled and underperforming students



Our State Strategies

4. Improve **data collection** efforts to identify and address CTE access challenges for SWDs

SCDE is working closely with the Department of Employment and Workforce, and all partnering agencies to build out a public facing statewide data collection system. The portal's goal will be to streamline data collection processes for state and federal reporting and allows districts to access a data dashboard to inform quality improvement and decision-making at the local level.



Our State Strategies

5. Offer **stackable credentials** to facilitate employment opportunities

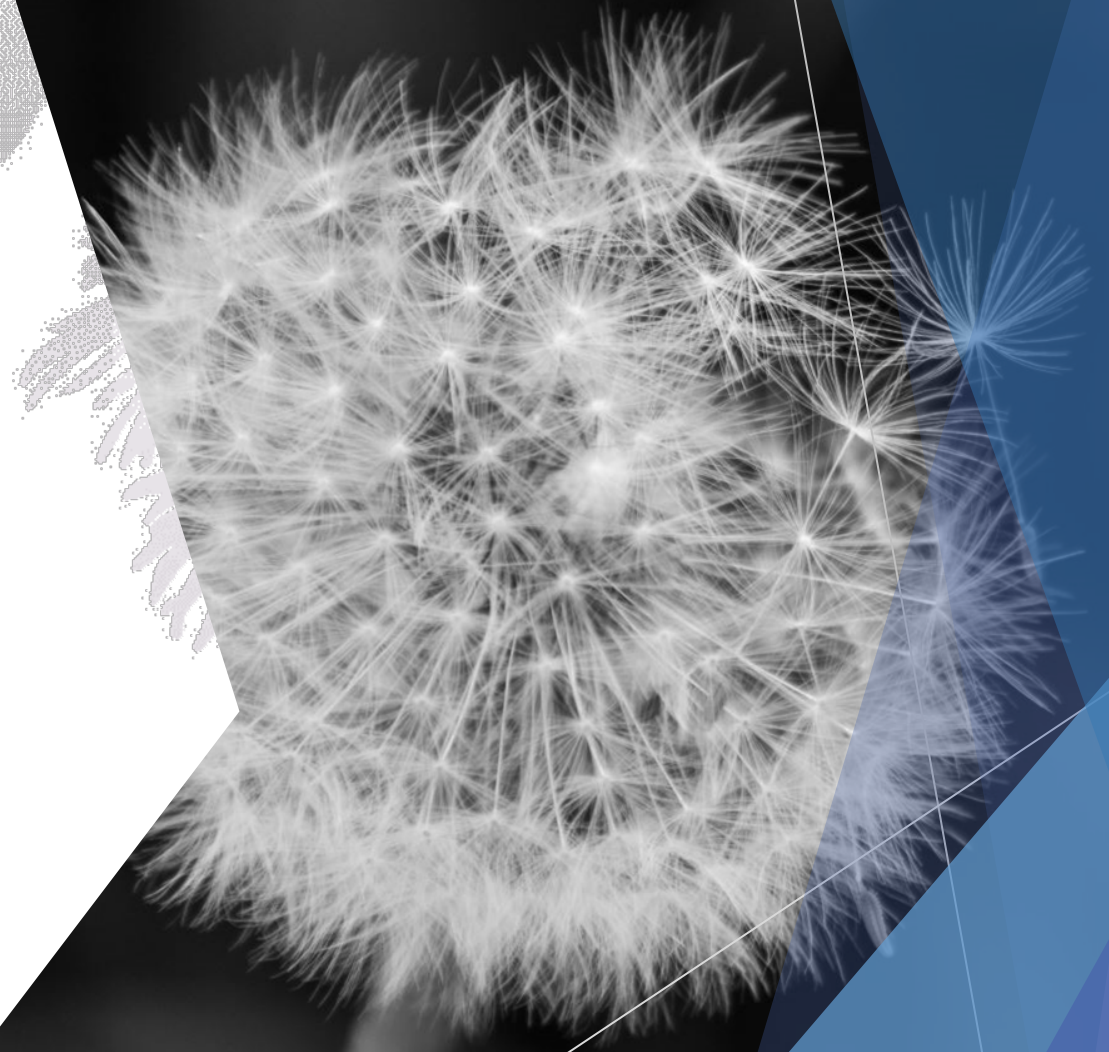
South Carolina is currently working to develop a tiered credential report for the state's accountability system. In addition to the tiered accountability system, work is underway to provide stackable or micro-credentials to allow flexibility and multiple entry and exit points for students whose educational pathways are interrupted as part of the 19-unit Academically Challenging Enhance Learning high school Diploma.



***“Never doubt that a small
group of thoughtful
committed people can
change the world.***

***Indeed, it is the only thing
that ever has.”***

~Margaret Mead



Thank You!

Anna Duvall

Team Lead, Office of Career and Technical
Education & Student Transition Services
South Carolina Department of Education
aduvall@ed.sc.gov

Maria Swygert

Team Lead, Office of Career and Technical
Education & Student Transition Services
South Carolina Department of Education
nmswyger@ed.sc.gov





Grace Delgado

Executive Director of Multilingual Services

Brooke Martin

**Executive Director of Career & Technical
Education**

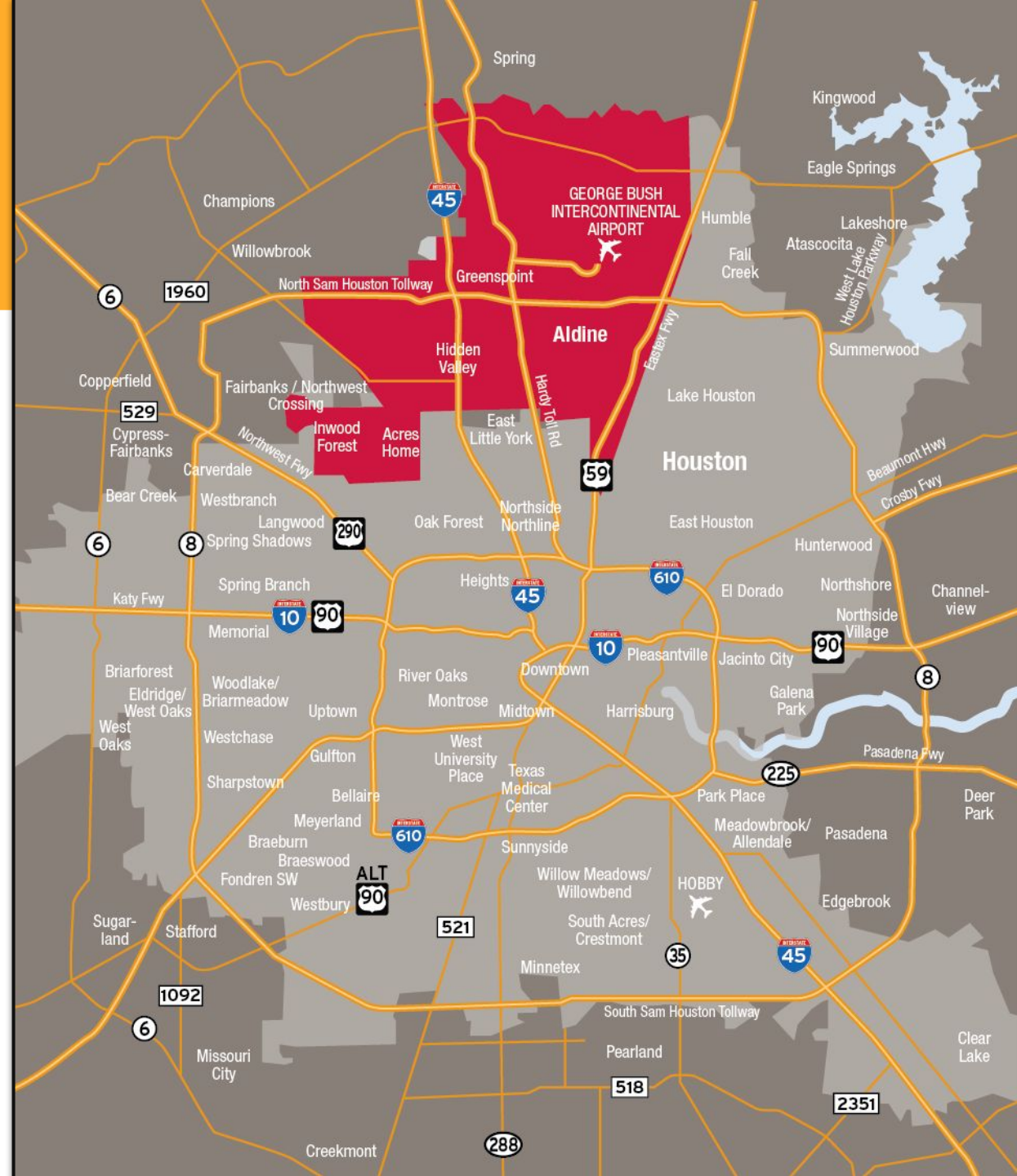
Aldine ISD

Our Vision

All Aldine ISD students will receive a dynamic and unparalleled education that guarantees choices and opportunities today and in the future.

Our Mission

Aldine ISD will provide a rigorous and enriching educational experience that prepares every student for success in college, career, and life.



Demographics



District Enrollment



EB Enrollment



CTE Enrollment



CTE STATS



Service students grades 6 - 12; 29 campuses



Provide opportunities to earn over 50 Industry Based Certifications



Provide opportunity of over 68 Dual Credit courses



Provide students industry experience and workforce certificates and partnerships



Students in CTE programs have a higher graduation rate than those who are not.

DR. LATONYA GOFFNEY

Aldine ISD Superintendent



It does not matter how our
students came to us....

but it does matter how they
leave us!



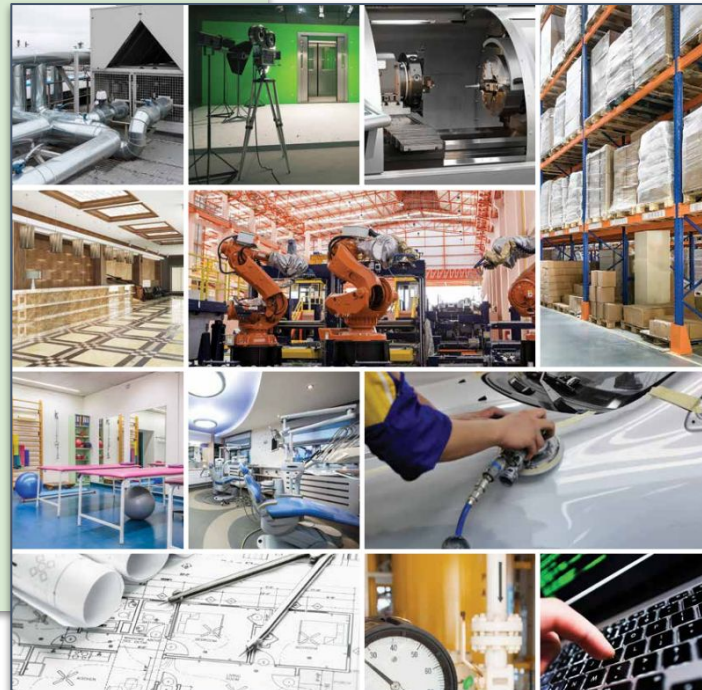
**Choices &
Opportunities**



Career-Focused Education CTE Pathways

Comprehensive High School Programs of Study

- Accounting and Financial Services
- Advanced Manufacturing and Mechanics
- Agriculture Science
- Applied Agricultural Engineering
- Architectural Design
- Automotive
- Aviation (Davis only)
- Business Management
- Cosmetology
- Culinary Arts
- Design and Multimedia Arts
- Design and Multimedia Arts (focus on Fashion Design)
- Engineering (CAD)
- Entrepreneurship
- Healthcare Therapeutic Services
- Information Technology and Support Services
- Law Enforcement
- Teaching and Training



Choice-Schools CTE Opportunities

Blanson

- Travel, Tourism and Attractions
- Carpentry
- HVAC and Sheet Metal
- Manufacturing Technology
- Welding
- Automotive (Collision)
- Automotive (Diesel and Heavy Equipment)
- Graphic Design and Multimedia Arts
- Advanced Manufacturing and Machinery Mechanics
- Digital Communications
- Healthcare Therapeutic Services
- Dental Assistant
- Emergency Medical Technician
- Personal Care
- Programming and Software Development
- Process Technician
- Distribution and Logistics

Avalos

- Legal Studies
- Teaching and Training
- Cybersecurity
- Networking Systems
- Non-Destructive Testing

Hall

- Carpentry
- Welding
- Teaching and Training
- Entrepreneurship

La Promesa

- Teaching and Training
- Commercial Photography
- JROTC

YWLA

- Biomedical Science
- Engineering
- Programming & Software Development

Carver

- Interior Design
- Mechatronics

HEAL HS

- Nursing
- Pharmacy
- Non clinical medical administration
- PT/OT Rehab.
- Medical Imaging



District of Innovation

The District specifically seeks flexibility to **hire professionals who are not certified teachers but have experience and a related degree in the content area to supply the needed teachers.**

The District will determine the areas and programs for this opportunity based on staffing needs. Aldine ISD will **provide local qualifications and training requirements for professionals and experts to teach courses in lieu of traditional state requirements.**



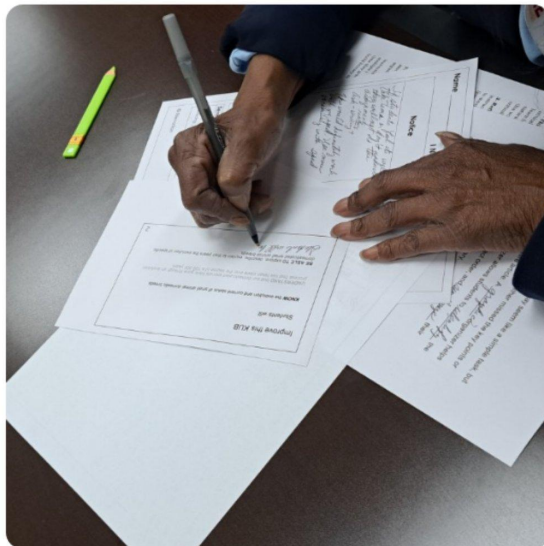
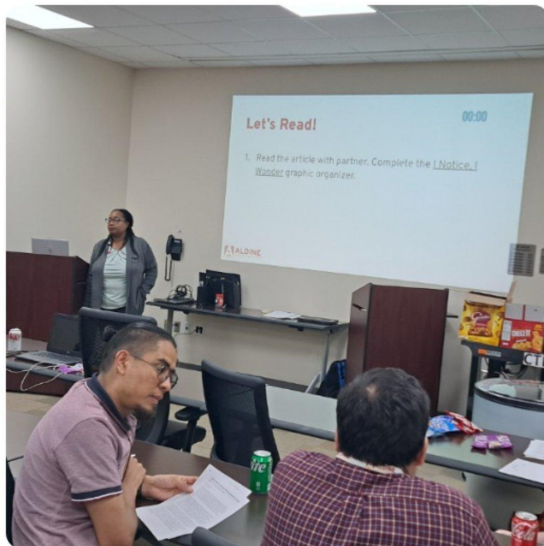
Professional Learning Opportunities


Professional Learning Collaborations



Brooke Martin @Edu... · 2/23/23

It's not your students or my students, it is OUR STUDENTS! Supporting OUR students no matter what class they are in so that every student has [#endlessopportunities](#) @AldineISD @AldineCTE #AldineConnected #AldineConnectado #AldineTandL #AldineMultilingual



Guest Speaker
Dr. José Luis Zelaya

OCTOBER 25
9:30 AM-1 PM

You are invited!
HOPE Summit
for 8th grade emergent bilingual students
(High school Opportunities Provide Empowerment)

Get information about diverse learning opportunities available through the different pathways in high school and graduation requirements. Dr. José Luis Zelaya will be the guest speaker and he will talk about the importance of education, embracing your culture and native language as well as English. Transportation will be provided.

M.O. Campbell Educational Center
1865 Aldine Bender • Houston, TX 77032

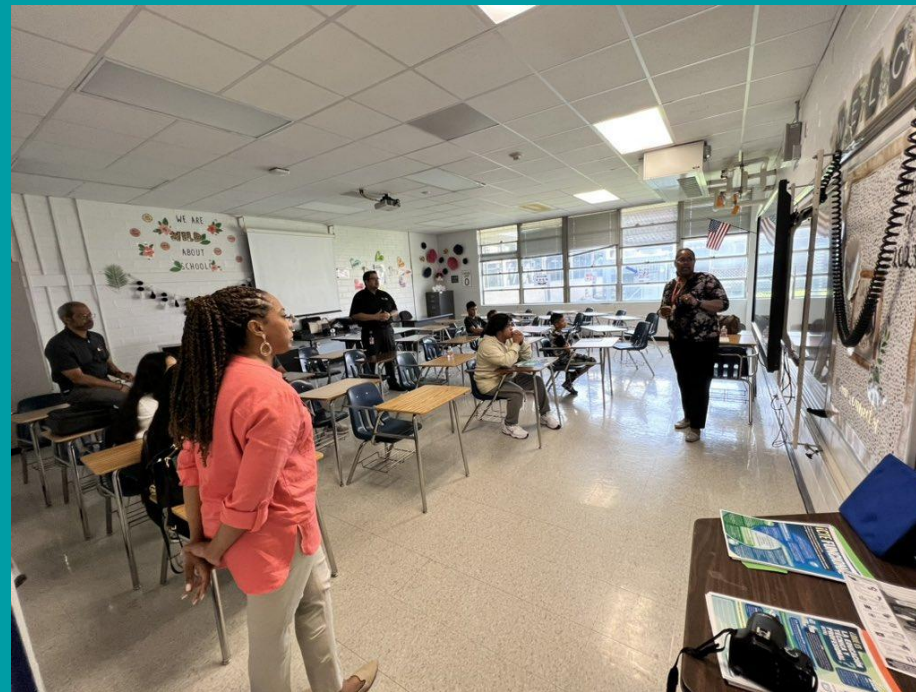
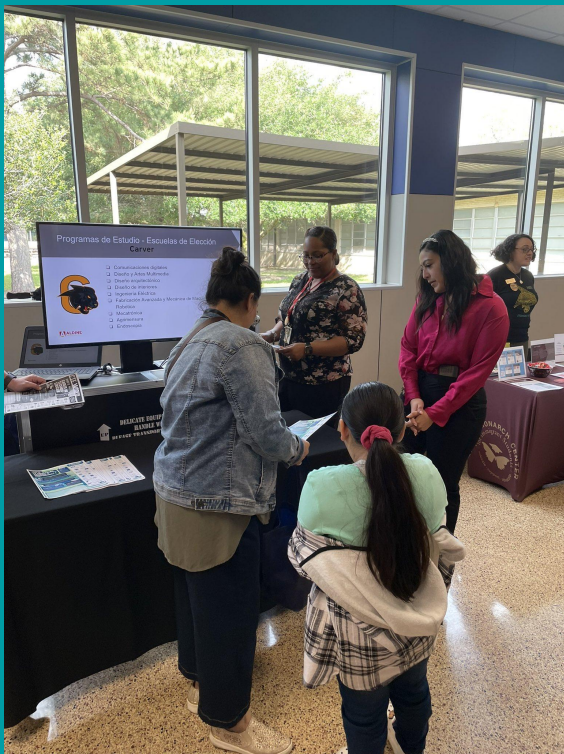
ALDINE
Independent School District

Presented by the Aldine ISD Multilingual Department | 281.585.7371

Team Collaborations



Team Collaborations





ALDINE
Independent School District

presents

SOÑADORES SUMMIT

Saturday • April 15
9:00 AM to 1:00 PM
ALDINE HIGH
SCHOOL
AUDITORIUM, LIBRARY, AND CLASSROOMS

2023

DARING TO DREAM
THROUGH EMPOWERMENT,
EDUCATION, SUPPORT, AND
CONNECTIONS

#AldineISDSoñadores2023

Learn about opportunities and resources available
for all Aldine ISD high school dreamers – born in
and outside the U.S. – Undocumented students,
DACA recipients, VISA holders, permanent
residents, refugees, asylum grantees, and their
parents are invited!

Transportation
may be available (ask your high school).


College & Resource Fair


College & Financial
Aid Info Sessions
for Parents and
Students


Admissions &
Financial Aid Lab
for 12th Graders


Representatives
from Community
Colleges & Texas
Universities


Family-friendly &
FREE Event!

Team Collaborations



Building
Community
Together



Contact Information

Brooke Martin

Executive Director of CTE

bdmartin@aldineisd.org

@EducatorMar10 @AldineCTE



Grace Delgado

Executive Director of Multilingual Services

ahdelgado@aldineisd.org

@delgadong94



@AldineISD #AldineConnected #AldineConectado

Q&A

Next Webinar

*Maximizing Access and Success for Special
Populations: Wraparound Supports*

August 13, 2024

2pm ET/1pm CT/12pm MT/11am PT

Registration link coming soon!

Contact Us

- Brooke Martin
bdmartin@aldineisd.org
- Grace Delgado
ahdelgado@aldineisd.org
- Anna Duvall
aduvall@ed.sc.gov
- Maria Swygert
nmswyger@ed.sc.gov
- Catherine Imperatore
cimperatore@acteonline.org