



July 25th - July 28th

Table of Contents

Key Note Speaker Bio	4
General Conference Program	5
Tuesday Breakout Workshops	8
Award Winners	13
President-Elect Bios	19
Division Presidents	21
MACS Agenda	22
MBEA/MCEA Agenda	26
MCCTA Agenda	38
MoEFCS Agenda	42
MHSE Agenda	52
MTTA/TEAM Agenda	54
MVATA Agenda	58
Exhibitors	63



Program Designer

Ryan Moore student at Culver-Stockton College from Victoria, Australia

Special Thanks

Thank You to "Administrative Leave" the band performing for both opening sessions!

Band Members

Melanie Ryan – Guitar – Director
Dallas County Technical Center
Jeff Cauley – Vocals- Director Unitec
Career Center

Justin Marler – Drums Adult Ed
Coordinator Unitec Career Center
Susie Suits – Vocals – Director Fort
Osage Career and Technical Center
Eric Schneider – Lead Guitar/Vocals –
Director Nevada Career Center
Randy Gooch – Bass – COO Columbia
Public Schools

Find us on social media!



Missouri ACTE

@MoACTE



President's Welcome



Welcome to Missouri ACTE Summer Conference. I am looking forward to seeing all of our Missouri CTE members in Springfield for our 53rd annual meeting! During our time together you will find opportunities to grow professionally and personally through the workshops and sessions being provided. Engaging in the workshops will provide you with tools to enhance your programs and challenge your students while networking with others will provide a support system within and across our CTE divisions. By participating

in the conference and within the MOACTE organization, we can ensure our students are receiving the highest quality of training available and that training will have a lasting impact on our classrooms, programs, schools and communities.

While you are here this week, consider ways to improve our organization by stepping into leadership roles. We have opportunities for our membership to be active on MOACTE through committee work as well as opportunities for members within divisions to seek out leadership positions. Being a member for 24 years, I did not recognize the opportunities available until I engaged in various leadership positions. Choose to get involved, step out of your comfort zone, and help lead and shape CTE for years to come.

I hope you enjoy our conference. It was planned just for you. Step up to the challenges this week. Embrace your opportunities. Take new ideas home with you. Impact your students. Teach CTE.

Jon Wilson, Missouri ACTE President

Keynote Speaker



Morris Morrison is obsessed with building Stronger, Kinder, Connected human beings. As co-owner of StoryMaker Brands and Windmill Park Media, Morris is a world-class Entertainer, Writer and Entrepreneur whose journey began in New York City before a doctor's words changed his life forever, after being orphaned a second time. Many world-leading organizations have partnered with Morris Morrison to build fearless, focused leaders that drive uncomfortable change and healthy disruption.

Challenges and opportunities early in Morris's life uncovered a unique brand of engagement that connects with audiences of all ages and backgrounds, with an unforgettable message that sounds like a Hollywood movie script. After receiving his education from Fairmont State University, and the John Chambers College of Business and Economics at West Virginia University, Morris Morrison's business journey included critical leadership roles in Human Resources and Sales & Marketing, prior to exploring his dedicated path of Entrepreneurship. Today, many global leaders have witnessed his message live on stage and in his latest books titled: Culture Crashers, The Storymaker and Disrupt Yourself. His message is powerful, his story is unforgettable, and his focus is clear: to bring families & teams closer, and make organizations more impactful, through personal ownership and service. Morris is best known for celebrating his biggest accomplishments off stage - through his Faith, Family and Follow-Through in his community — with service to organizations including Big Brothers & Big Sisters, Fellowship of Christian Athletes, the YMCA and many others. Morris is a proud brother of Alpha Phi Alpha Fraternity and he currently serves on the Board of Directors for the West Virginia University Alumni Association, while also serving on the board (visiting committee) for the John Chambers College of Business and Economics at West Virginia University.

General Conference Program

Monday, July 25

- **9:30 a.m. Missouri ACTE Board of Directors Meeting**

Oasis Hotel and Convention Center - Sahara Room

Continental Breakfast begins at 9:00 a.m.

- **1:00 p.m. - 6:00 p.m. Missouri ACTE Conference Registration**

Oasis Hotel & Convention Center - Grand Ballroom

- **1:00 p.m. - 6:00 p.m. Exhibits Open**

Oasis Hotel & Convention Center - Grand Ballroom

- **2:00 p.m. - 3:00 p.m. All Missouri ACTE Committee Meetings**

Oasis Hotel & Convention Center - Maui Ballroom

Tuesday, July 26

- **7:00 a.m. - 3:00 p.m. Exhibits Open**

Oasis Hotel & Convention Center - Grand Ballroom

- **7:00 a.m. - 3:30 p.m. Missouri ACTE Conference Registration**

Oasis Hotel & Convention Center - Grand Ballroom

Donuts & Coffee in the Convention Center Atrium compliments of Springfield CVB

- **8:00 a.m. - 9:30 a.m. Opening General Session - Paradise Ballroom - MoEFCS, MCCTA, MTTA, MACS, TEAM, MHSE**

Welcome; President-Elect Speeches; Speaker: Morris Morrison

- **10:00 a.m. - 11:30 a.m. Opening General Session - Paradise Ballroom - MVATA, MBEA, MCEA**

Welcome; President-Elect Speeches; Speaker: Morris Morrison

- **9:45 a.m. - 10:30 a.m. All Division Sessions (During the Second Opening Session)**

You can Too! - Kalahari - Oasis Hotel & Convention Center

- **11:30 a.m. - 1:00 p.m. Lunch - Many options and discounts will be offered from local restaurants**

Information on www.mo-acte.org

50 Minute Sessions:

Oasis Hotel & Convention Center

- **1:00 p.m. Maui - Oasis Hotel & Convention Center**

Gamification - Beyond Quizlet to Among Us

- **1:00 p.m. Coco - Oasis Hotel & Convention Center**

Life Hacks for Teachers!

- **1:00 p.m.** Fiji - Oasis Hotel & Convention Center

Inclusivity in CTE

- **1:50 p.m. - 3:00 p.m.** **Beverage Break** sponsored by Missouri ACTE for Tuesday afternoon conference attendees

- **2:00 p.m.** Maui - Oasis Hotel & Convention Center

Organizing Lesson Plans

- **2:00 p.m.** Coco - Oasis Hotel & Convention Center

Strategic Planning and How It Relates to Improved Enrollment and Partnerships

- **2:00 p.m.** Fiji - Oasis Hotel & Convention Center

Internationalizing CTE Curriculum: An Approach to DE!

- **3:00 p.m.** Maui - Oasis Hotel & Convention Center

Integration of Workplace Readiness Skills

- **3:00 p.m.** Coco - Oasis Hotel & Convention Center

Literacy in CTE

- **3:00 p.m.** Fiji - Oasis Hotel & Convention Center

Be a Better You through Self Awareness Practices

- **4:30 p.m. - 6:30 p.m.** **Missouri ACTE Awards Reception/New Professionals**

all attendees welcome

The Barley House at Moon Town Crossing (located next to Holiday Inn Express & Suites MVATA hotel)

Wednesday, July 27

- **8:00 a.m. - 11:00 a.m.** **Missouri ACTE Late Registration**

Oasis Hotel & Convention Center Glass Lobby

- **3:30 p.m.** **House of Delegates Meeting**

Oasis Hotel & Convention Center - Coco

Thursday, July 28

- **12:00 p.m.** **Missouri ACTE Board of Directors Meeting**

Oasis Hotel & Convention Center - Coco

Lunch service begins at 11:30

Bylaws Change

At the Missouri ACTE Spring Board of Directors meeting, a motion was passed to merge the following standing committees — Professional Development, Membership and Public Information — into one committee called the Communications Committee. This will require a vote at the house of delegates on Wednesday, July 27, 2022 at Summer Conference because all committee's are listed in the bylaws on pages B-5 and B-6.

Currently the bylaws state:

ARTICLE VIII - Committees

A. Each Missouri ACTE standing committee shall be comprised of one member from each division, with the exception of the Program of Work Committee which shall be the chairs of the other standing committees:

1. The Legislative Committee shall take appropriate legislative action on behalf of the association to promote programs of career, practical arts, technical and vocational education.
2. The Policy Committee shall solicit and prepare policy recommendations, resolutions, bylaws amendments and operational procedures for consideration by the Board of Directors and/or the House of Delegates.
3. The Awards Committee shall facilitate the recognition process for individuals and/or organizations that have made outstanding contributions to programs of career, practical arts, technical and vocational education and/or the Missouri ACTE.
4. The Program Improvement Committee shall facilitate the planning, operation and evaluation of the annual Missouri ACTE meeting.
5. The Professional Development Committee shall facilitate a program of professional development to strengthen the Missouri ACTE by enhancing the members' professional skills.
6. The Public Information Committee shall publicize the contributions made by career, practical arts, technical and vocational education.
7. The Membership Committee shall conduct activities that will result in membership growth and satisfaction.
8. The Financial Review Committee shall review the financial records of the Association at the fall, spring, and summer Board of Directors' meetings.
9. The Program of Work Committee shall develop, implement, and evaluate the program of work.

If the bylaws change passes, the three committees would be removed and a new committee listed The Communications Committee shall publicize the contributions made by career, practical arts, technical and vocation education and conduct activities that will result in membership growth and enhance members professional skills.

Division Breakout Workshops

-Tuesday July 26th -

Room	Maui	Coco	Fiji	Kalahari
9:45				You can, TOO! Adapting Your Programs to the Modern Apprenticeship Model
1:00	Gamification-Beyond Quizlet to Among Us	Life Hacks for Teachers!	Inclusivity in CTE	
2:00	Organizing Lesson Plans	Strategic Planning and How It Relates to Improved Enrollment and Partnerships	Internationalizing CTE Curriculum: An approach to DEI	
3:00	Integration of Workplace Readiness Skills	Literacy in CTE	Be a Better You through Self Awareness Practices	

Kalahari Room

9:45 a.m. – 10:30 a.m.

You can, TOO! Adapting Your Programs to the Modern Apprenticeship Model

Cynthia Walker, DESE

Apprenticeships for youth are expanding across the state at a rapid pace. The CTE/High School programs have used various positions to achieve their growth. One of the greatest challenges to getting traction is having a person manage the program. A panel of peers who span from various model programs will answer some common questions and be available for interaction. The RYA programs across the state are managed by directors, apprenticeship coordinators, and instructors who are just starting or expanding apprenticeships in their schools. This will provide attendees with an interactive experience with various models working across the state.

Maui Room

1:00 p.m.

Gamification-Beyond Quizlet to Among Us

Jonathan Walker, Culver Stockton College

This presentation will be interactive using Gimkit and Booklet. Participants will be immersed into gamification. A phone or laptop will be required for participation and classroom readiness! This presentation will give teachers tools they can immediately implement into the classroom.

2:00 p.m.

Organizing Lesson Plans

Amy Harkey, Purdy High School

Planbook, Erin Condren, template from Teachers Pay Teachers....which do you use to keep yourself organized week to week? There's no true and tried way that fits everyone, but this session will have some tips for helping you in our digital world. Unit planning, weekly planning and substitute plans across all content areas will be included.

3:00 p.m.

Integration of Workplace Readiness Skills

Kelli Englebrecht, DESE

We realize there is a current workplace challenge. Industry can not find qualified employees. They are begging for workers who are equipped with technical skills and workplace readiness skills. Learn what essential workplace elements are important to industry and learn classroom strategies that will give your students the edge in today's market. The SkillsUSA Framework will be used as the base for this session.

Coco Room

1:00 p.m.

Life Hacks for Teachers!

KA'sandra Leer, Crowder College

CTE classrooms are busy, hectic, and overflowing with equipment. CTE classrooms have a propensity to contain more tools, gear, and gadgets than there is space available. This presentation will demonstrate quick, simple, cheap ideas to assist with creating more workspace with little hassle. You don't have to be creative or crafty to turn your classroom into a comfortable, manageable learning environment.

2:00 p.m.

Strategic Planning and How It Relates to Improved Enrollment and Partnerships

Brian Noller and Jeff Green, Northland Career Center

This session will be a look at how Northland Career Center has utilized strategic planning to continuously improve and build partnerships to help our students, our facility, and future plans. This process started approximately 10 years ago and continually evolves each year. See how this intentional planning and process has helped our enrollment and build partnerships with our students, parents, schools, districts, and community. We will also share how marketing played an important role in our success.

3:00 p.m.

Literacy in CTE

Catherine Mayberry, Montgomery County Middle School

"But I am NOT a reading teacher!" Are these words you have found yourself thinking when asked how you are including literacy in your career and technical classroom? In this session we will learn about how increasing literacy in our content areas can positively impact students and explore a variety of engaging and impact strategies that can be integrated into your CTE curriculum.

Fiji Room

1:00 p.m.

Inclusivity in CTE

Krystle Gremaud and Michelle Conrad, University of Central Missouri

Today's students are more diverse than ever when it comes to learning. Research tells us that almost half of our students have a learning disability but of that half, nearly 20% go undiagnosed. In this session we'll look at what it means to be classroom inclusive, why inclusivity is a must, and offer easy suggestions that can help any learning style.

2:00 p.m.

Internationalizing CTE Curriculum: An approach to DEI

Michelle Conrad and Larae Watkins, University of Central Missouri

Educators need to ensure that ALL students have the opportunity to participate in high-quality CTE programs. Finding ways to internationalize CTE curriculum for the global economy can become a springboard for inclusion. This session will review a framework for DEI through internationalization and provide resources and student activities.

3:00 p.m.

Be a Better You through Self Awareness Practices

Colleen Abbott, Missouri Ag Ed

Do you bring your best self to work each day? Are you still weighed down by your last 'evaluation' - from your admin or your freshman class or your spouse or maybe even from something your third grade teacher said that is still in your head? This workshop will take you on a walk down memory, as it relates to you in your classroom and present day relationships. We will not only look at the past, but also to today with a variety of strategies to improve your self awareness. We each want to be great leaders in our classrooms, schools, communities, and families. Be prepared to laugh and take a brave step toward bringing your best self to others each day.

IF YOU ARE LOOKING FOR ORIGINAL, *look no further.*

Now if you're looking for your room, *look at this map.*

The Oasis is designed like no other hotel in the world. While that offers guests a one-of-a-kind experience, it also means you may need a little help getting around. Our resort-inspired property gives guests the space to explore the extensive amenities we provide without feeling confined within a single building.

Below you'll find a map of our entire property. (Psst. There's more on the back. It was hard to fit 11-acres worth of buildings on one side!) You may want to keep this handy for at least the beginning of your stay while you get the lay of the land. However, if you are looking for a personal tour, any of our staff would be happy to take a break and show you around.

PROPERTY MAP

MAIN ENTRANCE

GLENSTONE AVE

NORTH

- OASIS HOTEL
- HOTEL LOBBY
- CONVENTION CENTER
- FIRE & ICE RESTURANT & BAR
- OUTDOOR POOL
- PARKING
- GATED EXIT



HOTEL FLOOR MAP

LOWER LEVEL B (INCLUDES UPPER LEVEL D ROOMS)

LOWER LEVEL A (INCLUDES UPPER LEVEL C ROOMS)



GUEST ROOMS

- LOWER LEVEL A
- UPPER LEVEL C
- LOWER LEVEL B
- UPPER LEVEL D

AMENITIES

- LOBBY/REGISTRATION
- MEETING SPACE
- ATRIUM
- FIRE & ICE
- POOL/SPA
- FITNESS CENTER
- BUSINESS CENTER
- SNACK SHOP
- GUEST LAUNDRY

OTHER

- RESTROOMS
- ELEVATOR
- VENDING (ALL LEVELS)
- WALKWAYS
- STAIRS
- ALTERNATE ENTRANCES
- FLOOR LEVEL CHANGE



2022 Award Winners

Administrator of the Year: David Webber, MCCTA Administration, Crowder College

The MoACTE Administrator of the Year Award recognizes administrative CTE professionals at the school, district, county, state or federal level who have demonstrated leadership in ensuring teacher and student success and have made significant contributions toward innovative, unique and effective career and technical education programs. Receiving this award for 2022 is David Webber. Mr. Webber is the director at Crowder College Technical Education 2015, before that he taught Career Prep. David



repeatedly makes students and staff feel welcome, regularly visiting with students and staff in a manner that feels more like family than work-related. Because of this caring environment, students regularly visit even after graduation. David understands that the students coming to the tech center have problems that resulted from experiences outside the tech centers control. But through practices that could only be described as trauma-informed, students are provided with a caring atmosphere that helps many overcome past events and successfully gain career skills that can serve them for a lifetime. David has an open-door policy, where if there is a problem, it is immediately confronted and worked on as a community. Everyone takes part in making sure the Crowder College Technical Education Center is there to support our students. During his tenure, David has established a summer school program that invites 8th-grade students into the tech center for a month where they can experience the programs while also having a certified classroom teacher partner with the tech teacher so that mathematics can be linked to the tech education in a STEM atmosphere. This recruitment tool gives younger students an experience for a lifetime and keeps them informed when they decide if CTE is suitable for their futures. Terri Frye from Crowder College stated, "David Webber is very highly self-motivated to provide the best educational opportunities for all of our students. He has been very involved in supporting and building our programs in order to make them more successful. The benefits of this effort for our students and staff has been beyond measure."

New Teacher of the Year (3-5 years experience) – Hali Hill, MoEFCS, North Point HS – Wentzville School District

The New Teacher of the Year Award recognizes an ACTE member who has taught full-time for 3-5 years and in their short time has made significant contributions to Career and Technical Education through curriculum development and through providing opportunities for students in CTSOs.

Receiving this award for 2022 is Hali Hill. Ms. Hill is a 2018 graduate of Missouri State's Family and Consumer Sciences Teacher Education Program and at the time of her application



had just finished teaching for her third year in the Wentzville School District. At Holt HS, Hali serves as the FCCLA Advisor, Culinary Club Advisor, and Prostart Educator. Within FCCLA, her chapter has adopted multiple families for the holidays, bell rang for the Salvation Army, hosted a career fair for 1,400 high school students with over 50 presenters, and competed in multiple Student Taking Action with Recognition (STAR) events. As a prostart educator, Hali has taken one team to compete at the invitational and completed level 1 and 2 of the summer institutions. In just three short years, Hali has become an essential part of the Holt High School FCS program, Region 4 FCCLA, and is a member of the Board of Directors for Missouri Educators of Family and Consumer Sciences. "Hali has been highly passionate about teaching Family and Consumer Sciences since she was a middle school student. Her passion shows through when she is working with students in the classroom. Hali encourages students in her classes every year to join FCCLA and compete in STAR Events. When they so often do, she helps guide them through the process. Hali shares this passion for FCS and FCCLA with her students in a way that makes them want to be a part of it," states Ruby Rahn, fellow FCS teacher at Holt High School.

Teacher of the Year (must have 5 years teaching experience) –

Tiffany Bungenstock, MoEFCS, West St. Francois County R-IV

Missouri ACTE Teacher of the Year Distinguished Service Award recognizes an ACTE member who has completed 6 or more years of full-time teaching, has made significant contributions and is considered to be an outstanding leader in the field. Receiving this award for the 2022 year is Tiffany Bungenstock. At the time of her application, Tiffany served her 9th year at West St. Francois County School District as a Family and Consumer Sciences teacher, working with both middle and high school students. Throughout her classes she has toured local businesses, industrial factories and works with business partners to help best prepare students for the workforce.



In her application, Tiffany says "it is an honor and privilege to provide opportunities for students to discover themselves, what they want for their future, and help create a path to achieve those goals and dreams." Because of COVID she started virtual cooking classes to help students, community members, friends and family prepare healthy and cost effective meals. The high school principal at West County High School, Mr. Levi Rawson said the following in her application, "Mrs. Bungenstock is a very gifted person in that she has the unique ability to motivate those she works with as well as those she works for. She is a caring individual who goes the extra distance to help those around her to be successful. She is very supportive of her students while clearly holding them to high expectations so they will achieve at a high level."

Lifetime Achievement Award – Betty Glasgow, MoEFCS, Bolivar R-1 Schools

The Missouri ACTE Lifetime Achievement award recognizes CTE professionals for their leadership on behalf of ACTE, their innovations in CTE, and their contributions to the field over an extended period of time. We are honored to recognize the 2022 MoACTE Lifetime Achievement award winner, Betty Glasgow. Betty has represented the CTE profession well in so many capacities. She is being recognized for her contributions in the areas of Facilities, Equipment, Technology and Material and Business and Community



Partnerships. “In the ten years I have known Betty, I have never met anyone else more dedicated to their program, profession, and community. She has gone above and beyond the normal call of duty for any teacher. While some teachers are satisfied with remaining in the classroom and keeping to themselves, Betty is always looking for the next opportunity to promote Family and Consumer Sciences, and career and technical education in general.” says Darci Friberg, FCS teacher and MoEFCS Board Member. Over the years, Betty has built a Culinary Program from the ground up. She oversaw a complete renovation of her classroom into a state-of-the-art commercial kitchen to continue training her students for life beyond high school. She has mentored student leaders through FCCLA and teachers in DESE’s mentoring program. She has served on numerous committees for MoEFCS and MoACTE in addition to serving as President Elect, President and Past President for MoEFCS. Betty has utilized the industry and community partnerships for the entire time she has been at Bolivar High School in the ProStart Culinary Arts program. During the past three years, Betty has begun developing a new program at Bolivar High School called, “BoMO Works Apprenticeships and Internships,” working closely with school administrators, Chamber of

Commerce and Economic Development community members to allow students to complete paid on-the-job training in a variety of career paths. The program utilizes the Department of Labor, allowing students to credential while meeting local workforce needs. Currently, BHS is the only comprehensive school with this type of program.

Carl Perkins Community Service Award – Tiffany Bungenstock, MoEFCS, West St. Francois County R-IV

The Carl Perkins Community Service Award is given to a Missouri CTE teacher for their outstanding community service endeavors and promotional ideas leading to the continued development and enhancement of Career and Technical Education. Tiffany Bungenstock from West St. Francois County R-IV School District has been selected to receive the 2022 Missouri ACTE Carl Perkins Community Service Award. Tiffany’s idea of bringing life to family and consumer science courses is to bring as much hands-on learning as



possible to the classroom. Prior to the pandemic, the West St. Francois County School District's Foods class has had the opportunity to serve St. Patrick's Day lunch to the local Senior Center, and served Thanksgiving Dinner to our local Veterans. It bridges the generational gap between youth and adults by showing elders that youth can help and give back and it also shows youth the importance of serving others. In Tiffany's personal time, she started a 'What's for Dinner' - Meal Prep with Mrs. B!! Virtual cooking classes to help students, community members, friends and family prepare healthy and cost effective meals. She has partnered with her local WCC Hope Center to help aid in turning the government - grant funded, food boxes into different types of meal creations for children and adults. In her afterschool program, she has partnered with community members and utilized the 21st Century Grant to host a school Foods Club, a Babysitting Club, and Life Skills as an extension of the Family & Consumers Science courses she teaches in her school district. MODOT's Adopt A Highway is a community outreach program chosen by her FCCLA chapter. This adoption allows Tiffany and her students to keep the roads and highway, in front of all three of our schools buildings, beautiful! Congratulations Tiffany! We, too, greatly appreciate her dedication to our profession and to developing young adults with a passion for community service.

Award of Merit Winner: John "Scott" Fuenfhausen

John "Scott" Fuenfhausen has been teaching Marketing and Advertising at Columbia Area Career Center in Columbia, MO for 17 years. During this time, he has also served as a DECA Chapter Advisor and the District 2 Advisor. Scott has been a member of MOACTE/ACTE for his years in CTE and served as the President of Missouri ACTE in 2020-2021. He currently serves as the chair of the Membership Committee and ad Missouri ACTE Past President. Before teaching, Scott spent 17 years working in advertising and marketing on the client side (5 years) and full service advertising agency side (12 years) in Chicago and St.



Louis. Scott was an Account Supervisor and worked on industrial and consumer brands such as Hostess, Wonder Bread, CharBroil Grills, Behr Paint, Monsanto, Baldor Electric, and Texas Boot Company, just to name a few. Scott is also an Adjunct Instructor in the Strategic Communications department at the University of Missouri School of Journalism. He has taught upper level advertising courses at Mizzou for 15 years.

Award of Merit Winner: Bob Larivee

Bob Larivee currently serves as the Missouri Council of Career & Technical Administrators Executive Director since 2001. Bob has served in multiple roles during his career span both in education and in the workforce. He began his educational career as a teacher at Linn Tech High School, he also worked for Linn State Technical College and the Department of Elementary and Secondary Education for Missouri. Bob served as the Director for Resource Network for Effective Training in Rolla. Bob works diligently as the executive director for the administration group as well as an advocate for Career and Technical Education. Bob coordinates with the MCCTA board to plan their summer conference professional development, and fall and winter conferences. Bob attends all Missouri ACTE Board meetings serving as a liaison for the MCCTA Division. As an advocate for Career and Technical Education he stays on top of legislative issues facing our profession. Bob stated "from then to now (20+ years) my role continues to be the Executive Director of MCCTA... it's been the best position I could have ever had!" Bob is truly a champion for CTE in Missouri!

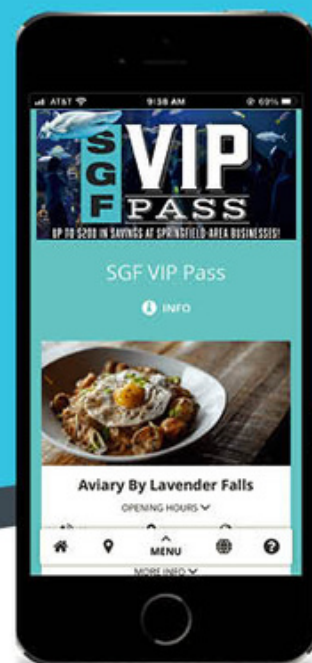


- Post – Secondary Teacher of the Year – No applicants
- Teacher Educator of the Year – No applicants
- Counseling & Career Development Professional Award – No applicants

WELCOME MISSOURI ACTE FOR YOUR SUMMER CONFERENCE! WE WANT TO TREAT YOU LIKE A VIP.



SGF VIP PASS



SAVE AS MUCH AS \$200 WHILE YOU'RE IN SPRINGFIELD!

Download the SGF VIP Pass for a list of over 25 restaurants and attractions with discounts to each. You'll find cuisine ranging from breakfast spots to authentic Italian, and attractions such as Wonders of Wildlife National Museum & Aquarium, the Springfield Cardinals AA team, breweries, museums and activities.

Scan this QR code for more info and sign up for the mobile pass on your smartphone browser for easy access to the participating businesses and discounts. There is no app to download. Show your pass at the restaurants and attractions to redeem the discounts!



HOW IT WORKS



Receive a text or e-mail with a link to your passport



Show your phone at partner locations to redeem savings

President Elect Candidates

Lacey Williams: MHSE



Lacey Williams is the Emergency Medical Technician program director and instructor at the Gibson Technical Center at Reeds Springs. Lacey is a member of the Missouri Health Sciences Education Division and has been a member for 8 years. Lacey serves as the local HOSA Chapter Lead Advisor for her school. Lacey belongs to these organizations besides ACTE, MoACTE and MHSE. Missouri State Teacher Association, National Association of Emergency Medical Services Educators, National Association of Emergency Medical Technicians, Missouri EMT Association, Arkansas EMT Association, HOSA and Sheepdog Impact Assistance. Lacey is involved in her community through her local HOSA chapter and its various community service projects such as but not limited to; roadside cleanup, shoreline clean-up, angel tree, food bank, Convoy of Hope, medical stand by at local community events, etc... I am active in my local church and served in the youth group assistant. Through the Sheepdog Impact Assistance organization, she am able to work with wounded soldiers, fire, police, and ems personnel

offering support while volunteering during any catastrophic event that may take place. She was named the 2015 EMT Sheep Dog of the Year Award based on my commitment and dedication to serving her community and country.

Lacey has received the following awards Teacher of the month by area chamber of commerce, EMT of the Year by Sheepdog Impact Assistance National Association

And the James O. Page outstanding educator by the Association of Emergency Medical Services Educators.

Career and technical education is the very foundation on which our society depends. The skilled workforce continues to keep our economy running and growing as is it adapts, improvises, and overcomes the challenges of time. Career and technical education should facilitate lifelong learning and success. Through a highly trained career expert and qualified instructor, knowledge, skills, and the affective domain is taught and achieved by the CTE student through storytelling, discussion, hands-on training, teaching, and research. I am a proud product of career and technical education! It is now my dream to pursue my passion for career and technical education and advocate for all Missouri CTE instructors. As The Missouri Association of Career and Technical Educators President-Elect candidate, I plan to utilize my strengths in leadership, industry, organization, and communication to benefit all instructors, students, and the great state of Missouri.

Dr. Tracey Eatherton: MoEFCS

Dr. Tracey Eatherton has been a secondary FCS teacher for 32 years and this fall will begin employment as an instructor at Southeast Missouri State University and a student teacher supervisor for Missouri State University. Tracey is a member of the Missouri Educators of Family & Consumer Sciences Division. Tracey has been a member of ACTE and Missouri ACTE for 32 years and a member of the Board of Directors for 10 years. She has served one term as treasurer for the MoEFCS division, as well as two terms in the position of president, which also required terms as president-elect and past-president. Tracey's MoEFCS committee involvement includes serving as a member and a chair on many committees, including Legislative, Professional Development, Awards, Membership, and Mentor. She has also served as a conference presenter numerous times from 1994-2021, and worked with the executive committee to plan and launch their virtual Summer Conference in 2020, as well as their first annual Virtual Winter Conference in 2021. Tracey has represented the FCS division on the National Coalition for Family and Consumer Sciences and served as a candidate for division president. She has also presented webinars for ACTE and been published in Techniques magazine, and has presented at the VISION conference multiple times from 2010-2019. Tracey has been a member of NATFCS (National Association of Teachers of Family and Consumer Sciences) for 32 years, serving on many committees at the national level, as well as the president of the group. As an FCCLA advisor, she has advised well over 100 regional and state officers, as well as a term on their National Board of Directors. Other professional memberships include Delta Kappa Gamma, Beta Rho chapter and MNEA Retired. She is currently a member of the Ste. Genevieve American Legion Auxiliary and the First Presbyterian Church of Ste. Genevieve. Tracey has also been an active member of the Ste. Genevieve Young Mothers Support Group, Reading Express of Ste. Genevieve County, and Ste. Genevieve County Relay for Life. Tracey has received the following awards MoACTE Lifetime Achievement, MoEFCS Lifetime Achievement, ACTE FCS Roll of Honor, NATFACS Award of Merit, Lowell Milken Center for Education Fellow, Missouri ACTE Teacher of the Year, MoEFACS Teacher of the Year, FCCLA Spirit of Advising Award, NATFACS PRIDE Award, MoEFACS PRIDE Award and the Ste. Genevieve High School Teacher of the Year



I am a product of Career and Technical Education. Growing up in a rural Missouri community, I was fortunate to have the opportunity to become deeply involved in Vocational Agriculture classes and FFA. The leadership I learned there helped to prepare me to teach in the secondary FCS classroom and encourage students to become involved in CTSOs. While encouraging students to grow and improve their leadership skills, I practice what I preach, becoming involved as both a state and national leader in the field of CTE. Having served in the roles of board member, officer, and session presenter at the state and national level, I have been an active participant in making positive changes happen at the state and national levels of FCS and CTE. While participating within the profession is essential, the other integral component is the external partnerships. Career and Technical Education is a vital, relevant part of our students' lives and our society, and we should honor the traditions that helped make us who we are while growing and adapting to serve the needs of an ever-changing world. Missouri ACTE needs to continue to nurture and cultivate strong partnerships with business and industry as well as policymakers. Some of our greatest supporters are our former students, who are now leaders all across the globe. Inviting those alumni to become involved as supporters of career and technical education can only strengthen our profession. Finally, utilizing deliberate efforts to share the magic of CTE will help others understand the importance and relevance of who we are and what we do.

Division Presidents



MACS

Stacie Fohn



MBEA

Rachel Lamp



MCEA

Kelly Fowler



MCCTA

Martin Hanley



MHSE

Jamie Bergsieker



MoEFCS

Debra Price-Schepman



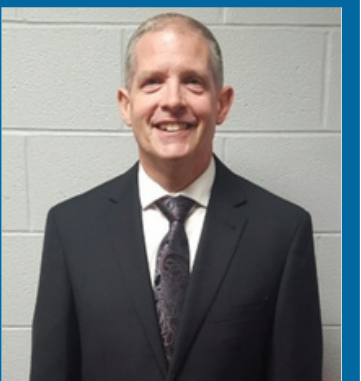
MTTA

Adam Boyd



MVATA

Angela Roller



TEAM

Gary Duncan



Monday, July 25

- **9:30 a.m. Missouri ACTE Board of Directors Meeting** Oasis Hotel and Convention Center - Sahara

Continental Breakfast begins at 9:00 a.m.

- **1:00 p.m. - 6:00 p.m. Missouri ACTE Conference Registration**

Oasis Hotel & Convention Center - Grand Ballroom

- **1:00 p.m. - 6:00 p.m. Exhibits Open**

Oasis Hotel & Convention Center - Grand Ballroom

- **2:00 p.m. - 3:00 p.m. All Missouri ACTE Committee Meetings**

Oasis Hotel & Convention Center - Maui Ballroom

- **3:30 p.m. - 4:30 p.m. MACS Officer Meeting**

Oasis Hotel

Tuesday, July 26

- **7:00 a.m. - 3:00 p.m. Exhibits Open**

Oasis Hotel & Convention Center - Grand Ballroom

- **7:00 a.m. - 3:00 p.m. Missouri ACTE Conference Registration**

Oasis Hotel & Convention Center - Grand Ballroom

Donuts & Coffee in the Convention Center Atrium compliments of Springfield CVB

- **8:00 a.m. - 9:30 a.m. Opening General Session - Paradise Ballroom -MoEFCS, MCCTA, MTTA, MACS, TEAM, MHSE**

Welcome; President-Elect Speeches; Speaker: Morris Morrison

- **10:00 a.m. - 11:30 a.m. Opening General Session - Paradise Ballroom**

MVATA, MBEA, MCEA

Welcome; President-Elect Speeches; Speaker: Morris Morrison

- **9:45 a.m. - 10:30 a.m. All Division Sessions (During the Second Opening Session)**

Oasis Hotel & Convention Center

- **11:30 a.m. - 1:00 p.m. Lunch - Many options and discounts will be offered from local restaurants**

Information on www.mo-acte.org

50 Minute Sessions:

Oasis Hotel & Convention Center

- **1:00 p.m.** Maui - Oasis Hotel & Convention Center
- **1:00 p.m.** Coco - Oasis Hotel & Convention Center
- **1:00 p.m.** Fiji - Oasis Hotel & Convention Center
- **1:50 p.m. - 3:00 p.m. Beverage Break** sponsored by Missouri ACTE for Tuesday afternoon conference attendees
- **2:00 p.m.** Maui - Oasis Hotel & Convention Center
- **2:00 p.m.** Coco - Oasis Hotel & Convention Center
- **2:00 p.m.** Fiji - Oasis Hotel & Convention Center
- **3:00 p.m.** Maui - Oasis Hotel & Convention Center
- **3:00 p.m.** Coco - Oasis Hotel & Convention Center
- **3:00 p.m.** Fiji - Oasis Hotel & Convention Center
- **4:30 p.m. - 6:30 p.m. Missouri ACTE Awards Reception/New Professionals**

all attendees welcome

The Barley House at Moon Town Crossing (located next to Holiday Inn Express & Suites MVATA hotel)

Wednesday, July 27

- **8:00 a.m. - 11:00 a.m. Missouri ACTE Late Registration**

Oasis Hotel & Convention Center Glass Lobby

- **8:30 a.m. - 8:50 a.m. IRC Process/Stackable Credentials**

Kalahari -Oasis Hotel & Convention Center

Presenter: Lori Brown - DESE

Lori will discuss the process and procedures for seeking new IRC approval through DESE and the implementation of stackable credentials under MSIP VI.

- **9:00 a.m. - 9:50 a.m. DESE School Counseling Update**

Kalahari -Oasis Hotel and Convention Center

Presenter: Chrissy Bashore, Pat Runge, Cierra Griffin - DECI

It's been a while since we've connected and we are excited to see YOU! Please join us as we share what's going on at DESE; including updated resources, SEL initiatives, the Missouri Postsecondary Advising Initiative (MPAI), Missouri Connections, legislation, staffing and all things school counseling. We encourage you to engage in this session!. We are here to serve YOU. What are we missing? What do you need from us?

- **10:00 a.m. - 10:50 a.m. SEL and CTE Workshop**

Kalahari -Oasis Hotel & Convention Center

Presenter: Elise Morris and Leslie Mareth, Franklin Technical Center

This workshop will explore job-readiness skills CTE learners need for job success through the lens of the CASEL SEL framework, known as the "CASEL Wheel." The center of this wheel contains five fundamental social and emotional competencies that support both learning and development. The four outer rings connect areas where students live and experience growth. School-family-community relationships concentrate on equitable learning environments and aligning SEL practices. Participants will learn how each of these features function to incorporate SEL-related skills into CTE program curriculum.

- **11:00 a.m. - 11:50 a.m. MACS Strategic Planning**

Kalahari- Oasis Hotel & Convention Center

Facilitator: Nate Zier, Herndon Career Center

Discussion about the future of the Missouri Association of Career Services and development of organizational goals. Looking at existing programs and events as well as development of independent bylaws. With the Missouri Postsecondary Advising Initiative how can MACS anchor itself in relevancy for career related professionals across Missouri? How can we get more membership involved in the planning process? This will be a discussion based session to help guide organizational leadership moving forward.

- **12:00 p.m. - 1:30 p.m. Lunch & MACS Business Meeting**

Maui Ballroom - Oasis Hotel & Convention Center

- **1:40 p.m. - 2:30 p.m. Work Based Learning: Developing and Maintaining a System that Works (CTE)**

Kalahari - Oasis Hotel & Convention Center

Presenters: Anessa Garner, Scott Regional Technical Center

Learn how Scott Regional Technology Center utilizes work-based learning opportunities within their sending school communities to help connect classroom learning with the world of work and how to make it successful for all involved. In this session you will be given resources to help jumpstart a work-based learning program in your community as well as other online resources to help you streamline the process.

- **2:40 p.m. - 3:30 p.m. Industry Engagement Handbook**

Kalahari - Oasis Hotel & Convention Center

Presenter: Nate Zier, Herndon Career Center

Discuss the benefits of an industry engagement handbook. You will go through the discovery and development process of creating a building wide industry engagement handbook. This process was developed as a method for new teachers and experienced teachers to conceptualize industry partnerships and understand the roles of building supports (administrators, counselors, career resource educators, career navigators/real world learning coordinators, etc. play in this process.

- **3:30 p.m. House of Delegates Meeting**

Oasis Hotel & Convention Center - Coco

- **3:40 p.m. - 4:30 p.m. MACS Roundtables**

Kalahari - Oasis Hotel & Convention Center

Facilitator: Stacie Fohn

Discussion based session on current topics and areas of concern for our membership as we enter the 2022-2023 school year. Some topics could include career service initiatives, CTE certificate, social/emotional supports, serving special populations, internship processes, etc. Please plan to be an active participant in discussions related to your challenges and be ready to share your strengths with others.

Thursday, July 28

- **12:00 p.m. Missouri ACTE Board of Directors Meeting**

Oasis Hotel & Convention Center - Coco

Lunch service begins at 11:30



MBEA/MCEA

MBEA - Business Division Agenda; Rachal Lamp, President

MCEA - Marketing Division Agenda; Kelly Fowler, President

All workshops and events for our associations will be marked to indicate which program affiliation, Marketing or Business, would benefit from our workshop content.

MBEA/MCEA Summer Conference Participation Prizes

As you engage with presenters throughout the conference, you will have the opportunity to enter to win many prizes. These prizes awarded at the conclusion of the DESE Update on Wednesday. Please look for information in your registration packet on how to enter.

Prizes include: (prize list may be revised and added to prior to conference)

- One Free Advisor Registration to Missouri FBLA-PBL SLC 2023
- One Missouri FBLA-PBL Priority Housing for SLC
- One of three FBLA Swag Bags
- DECA Choice of Advisor Assignment at SCDC (excludes event directors and coordinators)
- DECA Priority Seating for Hypnotist at SCDC
- Missouri DECA Swag Bag
- Prizes from our Celebrated Corporate Sponsor, iCEV

NOTE: It is suggested to bring your fully charged laptop or other device to the sessions to allow for your full engagement in the various activities being presented.

Lodging Locations

- Fairfield Inn located at 2455 N. Glenstone Ave

Booking Code: MOACTE - MBEA/MCEA Division

- DoubleTree by Hilton, 2431 N. Glenstone Ave.

Group Name: MoACTE - MBEA & MCEA Divisions

Earliest Arrival Date: July 24, 2022

Latest Departure Date: July 28, 2022

- Holiday Inn Suites, 2720 N. Glenstone Ave.

Booking code: MBEA/MCEA Division

Conference Locations

MBEA/MCEA Conference Location - DoubleTree by Hilton Conference Center

MoACTE Headquarters and Conference - The Oasis Hotel & Convention Center

For all of you 'tweeters' out there, here is our hashtag: **#MBEA_MCEA2022** for pics, etc.

2022 Missouri ACTE General Conference Program

- **9:30 a.m. Missouri ACTE Board of Directors Meeting**

Oasis Hotel and Convention Center - Sahara

Continental Breakfast begins at 9:00 a.m.

- **1:00 p.m. - 6:00 p.m. Missouri ACTE Conference Registration**

Oasis Hotel & Convention Center - Grand Ballroom

- **1:00 p.m. - 6:00 p.m. Exhibits Open**

Oasis Hotel & Convention Center - Grand Ballroom

- **2:00 p.m. - 3:00 p.m. All Missouri ACTE Committee Meetings**

Oasis Hotel & Convention Center - TBA Ballroom

- **4:00 p.m. - 6:00 p.m. MBEA Board Meeting**

Aleck Scott Room - DoubleTree by Hilton

- **6:00 p.m. - 7:00 p.m. MCEA Board Meeting**

Location - TBD

Tuesday, July 26

- **7:00 a.m. - 3:00 p.m. Exhibits Open**

Oasis Hotel & Convention Center - Grand Ballroom

- **7:00 a.m. - 3:00 p.m. Missouri ACTE Conference Registration**

Oasis Hotel & Convention Center - Grand Ballroom

Donuts & Coffee in the Convention Center Atrium compliments of Springfield CVB

- **8:00 a.m. - 9:30 a.m. Opening General Session**

Oasis Hotel & Convention Center - Grand Ballroom

Welcome; President-Elect Speeches; Speaker: Morris Morrison

- **8:00 a.m. - 9:30 a.m. MBEA Committee Meetings**

Glendalough III, DoubleTree by Hilton

- **10:00 a.m. - 11:30 a.m. Opening General Session - Paradise Ballroom**

Welcome; President-Elect Speeches;

Speaker: Morris Morrison

(MBEA & MCEA requested to attend this session)

- **11:30 a.m. - 1:00 p.m. Lunch (on your own)**

50 Minute Sessions: **Holiday Inn Hotel & Suites - 2720 N. Glenstone Ave.**

- **1:00 p.m. Missouri ACTE Workshop Sessions**
Holiday Inn Hotel & Suites
- **2:00 p.m. Missouri ACTE Workshop Sessions**
Holiday Inn Hotel & Suites
- **3:00 p.m. Missouri ACTE Workshop Sessions**
Holiday Inn Hotel & Suites
- **4:30 p.m. - 6:30 p.m. New Professionals Session and Missouri ACTE Awards Reception**
The Barley House at Moon Town Crossing (located next to the new Holiday Inn Express)

Tuesday Evening **MBEA/MCEA Conference Events**

- **6:00 p.m. - 7:30 p.m. 'Betting on a Brighter Future' with MBEA/MCEA!**
MCEA/MBEA Opening Session - Glendalough II & III, DoubleTree by Hilton



Keynote: Shela Lovewell

Sponsored by: An Educator's Triple D--Days, Decades, and Destiny

Keynote Sponsored by iCEV

Just as Guy Fieri travels to small towns across America that have quality Diners, Drive-ins, and Dives, business and marketing teachers across Missouri have their own version of Triple D-Days, Decades, and Destinies. Follow the progression of a teacher's career from the first day wading into a school until leaving the building for the last time. Interwoven into the presentation will be the opportunity to learn strategies to incorporate into everyday lessons and the time to interact with colleagues. Teachers will collaborate to create a project to take back to their respective classrooms. And just as Guy finds hidden gems in small town USA, treasure hidden in each day and decade will be unearthed in Missouri's high school business and marketing departments

- **7:30 p.m. - 8:30 p.m. MBEA District Summer Meetings**
Glendalough II & III, DoubleTree by Hilton
- **7:30 p.m. - 8:30 p.m. MCEA Annual Awards Meeting & District Meeting**
Glendalough IA & IB, DoubleTree by Hilton

Wednesday, July 27 **MBEA/MCEA Conference Workshops DoubleTree by Hilton**

- **7:30 a.m. - 8:50 a.m. Morning Session 1**

Native Ads: Understanding the Shifting in Social and Digital Media Environments

Room: Glendalough I-A

Dr. Jamie Grigsby, Missouri State University Professor

This presentation will provide a background on native advertising and some suggestions for topics and ways to cover it in the classroom. It will also give some updates on the ever-changing landscape where consumers can view digital native ads, including virtual/augmented reality and other new forms of social media. Privacy issues, concerns, and new regulations will also be discussed, including ways in which these issues are affecting native advertising strategy.

How to Create A Fully Immersive Learning Experience with your School-Based Enterprise

Room: Glendalough I-B

Kelly Fowler, Blue Springs High School

Does your school store/coffee shop have what it takes to make the big bucks, while influencing students to create a future hub of synergy, collaboration and creative ventures? Consider learning how to help students cultivate a well-developed understanding of what it takes to fully operate a business, while utilizing creative and passionate talents. After 3 years of trial and error in what we call our SBE class and Cat's Corner, there are some definite areas to highlight and share with those interested in this concept. Students run this business from every aspect, while school instructors provide them with a supportive learning environment. Cat's Corner, there are some definite areas to highlight and share with those interested in this concept. Students run this business from every aspect, while school instructors provide them with a supportive learning environment.

Incorporating iCEV's Online Curriculum in Any Learning Environment

Room: Glendalough I-C

Tracks: MB

This session sponsored by our Celebrated Corporate

Mark Johnson, iCEV

The modern CTE classroom requires flexibility, adaptability and customization. iCEV's online platform is changing the way CTE programs prepare students for the workforce. The online platform offers prebuilt, fully customizable courses complete with media rich lessons and supporting coursework for 16 career cluster areas. Educators can seamlessly integrate the iCEV curriculum platform with learning management systems (LMS) and/or single sign-on (SSO) providers to simplify the login process, access to course content and grading. Join this session to learn how iCEV's online curriculum library can be customized to fit the needs of every student, educator and learning environment.

Navigating Code.org and Its Resources

Room: Glendalough III

Joseph Brian, MOREnet

Code.org is one of the industry leaders in computer science education, not just in the U.S. but globally. Backed by industry giants and classroom leaders, Code.org has amazing resources for learners and educators. Learners can choose to explore Hour of Code options covering functions and loops, but done so with Star Wars and Minecraft characters. Educators and libraries can use Code.org resources to showcase computer science and all that it has to offer, without having to invest resources of your own. Navigate through online courses tailored to early learners, or choose to prepare students for career or industry with courses covering app development and text programming. See how to monitor student progress and find ways to bring excitement to learning computer science.



- **9:00 a.m. - 9:50 a.m. Morning Session 2**

ESG Scores: What they are and What they aren't

Room: Glendalough I-A

David Hammons, Missouri State University Professor

ESG Scores are a hot-button issue for many business professionals. While many see them as a threat, few understand what they actually are, and how they are calculated. In this presentation, the basics of Environmental Social Governance (ESG) metrics, along with their justifications and reasons for being developed, will be explained.

Bringing Ethics into the Classroom

Room: Glendalough I-B

Shad McGuire, Springfield Public Schools & Christy Isaacs, Carrollton Area Career Center

Ethics is the foundation of great leadership. Teaching students to make good decisions based on a defined set of values helps form the core foundation of ethical leadership. Come learn about the ethics resources that are available through the Daniels Fund Ethics Initiative High School Program. Leave with a better understanding of ethics and access to numerous classroom resources including course guides, lesson modules, and more!

Bringing it Back! Old School Active Learning Strategies for Today Room: Glendalough I-C

Tonya Skinner, Jackson High School

As the modern classroom has transformed with many 1:1 devices, students with airpods, and the virtual world that commands attention more than the physical one, it's often difficult to get students involved and engaged in the classroom. Further, many teachers just give in to the "watch a video, answer questions" model due to ease and frustration. In this session, learn how to get them up and moving in your classroom and to break away occasionally from the distractions of technology by incorporating more hands-on activities that you can do with little prep!

Using Scratch to Create Digital Presentations for Classrooms

SPECIAL TWO HOUR COMPUTER LAB SESSION: Part 1 (must bring charge laptop and have access to Scratch to participate)

Room: Glendalough III

Joseph Bryan, MOREnet

Want to help your students create a more exciting presentation? Are you looking for ways to bring interactivity to a lesson? Explore how Scratch can be used to enhance presentations and showcase student creativity by building projects in the device friendly online block coding platform. With a few blocks of code, users can put together projects that will be more engaging than traditional presentations.

- **10:00 a.m. - 10:50 a.m. Morning Session 3**

ESG Scores: What they are and What they aren't

Room: Glendalough I-A

David Hammons, Missouri State University Professor

ESG Scores is a hot-button issue for many business professionals. While many see them as a threat, few understand what they actually are, and how they are calculated. In this presentation, the basics of Environmental Social Governance (ESG) metrics, along with their justifications and reasons for being developed, will be explained.

Using MBA Research for DECA Prep

Room: Glendalough I-B

Jill Fannin, Scott Regional Technology Center

Learn about the valuable tool, MBA Research, and how it can be used to not only teach your marketing curriculum but how it aligns to DECA Performance Indicators and is great for prepping role plays! MBA Research can also be used in conjunction with many Learning Management Systems like Canvas.

Social Media Strategies for School Communications

Room: Glendalough I-C

Jill Salmon, Hermitage High School

Do you post on social media for your school or organization? If so, there are tips and tricks you need to know to up your online engagement. Facebook and Twitter will be the concentration with some information for Instagram users. Calls to action, scheduling and inspiring ideas for social media posts will be shared. As a member of #SocialSchool4EDU, find out what I have learned in mastering social media and school communications.

Using Scratch to Create Digital Presentations for Classrooms

SPECIAL TWO HOUR COMPUTER LAB SESSION: Continued - Part 2 (must have attended Part 1)

Room: Glendalough III

Joseph Bryan, MOREnet

• 11:00 a.m. - 11:50 a.m. Morning Session

Mizzou's AdZou Marketing Challenge

Room: Glendalough I-A

Scott Fuenfhausen, Columbia Area Career Center

The University of Missouri's School of Journalism, Strategic Communications department had its inaugural AdZou Marketing Challenge in December of 2021. Sixteen teams from around the state competed in this day-long event to see who would be awarded the champion. This annual event will take place again in the fall of 2022. Hear more about this exciting competition, how to register for the next competition and how it will benefit your DECA program and your students.

Teachers Across MO Are Supplementing CTE Curriculum with Free Resources

Room: Glendalough I-B

Sponsor Presentation: EVERFI

Stephanie James, EVERFI

Financial education at an early age can lead to a positive outlook and equips students with the resources they need to be successful. Are your students prepared for the real world? Educators in attendance will be provided access to digital resources that focus on financial education, entrepreneurship, and goal-setting. These resources are student-driven, standards-aligned, have assessments embedded into them, and are FREE. If you've used EVERFI in the past, come check out our new programs including a Turbo Tax simulation lesson, a retirement planning program, and updates to our platform that make your experience even smoother than before. Join us or visit www.everfi.com/k-12 to learn more.



VERSATILE ONLINE CTE CURRICULUM

Learning for **ANY** Environment

Support for **ALL** Teachers



IN-PERSON

Conduct in-person classes with ease using iCEV's extensive library of lesson content. Lessons are delivered in video and PowerPoint® presentations and are accompanied by premade lesson plans, activities, projects and assessments.



HYBRID

Customize instructional delivery with a variety of options to combine face-to-face instruction and online learning. Utilize iCEV's resources to incorporate flipped classroom or blended learning models, as well as promote self-paced work and independent study.



DISTANCE

Deliver instruction and coursework online through iCEV or integrate with your preferred Learning Management System (LMS). Printable and interactive coursework options accommodate all levels of technology access.



RESOURCE LIBRARY

iCEV offers an online resource library of comprehensive tutorials, guides and blogs to help you navigate and customize the iCEV platform, including strategies for distance learning and special populations.



TEACHER SUPPORT

Our customer support team is available to assist you by on-demand live chat, phone, or email. Additionally, the iCEV curriculum consultant team is available to assist customers in the field. At iCEV, we promise your questions will always be answered by a real person.



PROFESSIONAL DEVELOPMENT

iCEV always offers free professional development opportunities through one-on-one online webinars, on-site training and event workshops to assist you in tailoring iCEV resources to fit your specific needs.

EIGHT CTE SUBJECT AREAS

The iCEV platform features comprehensive Career & Technical Education (CTE) curriculum and instructional materials for eight major subject areas and covers the 16 Career Clusters and 80 pathways.



AGRICULTURAL SCIENCE



FAMILY & CONSUMER SCIENCES



ARCHITECTURE, CONSTRUCTION,
TRANSPORTATION & MANUFACTURING



HEALTH SCIENCE



BUSINESS, MARKETING, FINANCE, IT & MEDIA



LAW, PUBLIC SAFETY, CORRECTIONS
& SECURITY



CAREER EXPLORATION



SCIENCE, TECHNOLOGY, ENGINEERING & MATH

School Store Digital Branding

Room: Glendalough I-C

Aundrea Hill, Glendale High School

Want to explore your options for branding a school store across multiple media platforms? During this session we will explore how to create a consistent brand for multiple types of digital media. Including a Google Business Profile, Instagram, Facebook, Twitter, LinkedIn, YouTube and Canva for business.

Video Production Basics

Room: Glendalough III

Bob Martin, MOREnet

Whether you want to use video to teach or you want to teach video production, you have to learn the process. Everybody wants to shoot video, but if you don't plan it first, shooting over and over and then all the extra editing can be frustrating. This session will discuss and show resources for making the whole process easier and look at several tools you can work with.

- **11:50 a.m. - 12:30 p.m. Lunch ON US!**

Boxed Lunch available in The 'Chat Room' Networking Lounge

Glendalough II

- **12:30 a.m. - 1:00 p.m.**

DECA Update

Glendalough II (2)

Larry Anders, Missouri State DECA Advisor

Join Larry as he guides you through updates for 2022-23, including conference and competitive event changes and updates.

FBLA-PBL Update

Glendalough III (3)

Dylan Kennedy, Missouri State FBLA-PBL Advisor

Join Dylan as he guides you through updates for 2022-23, including conference and competitive event changes and updates.

- **1:00 p.m. - 3:00 p.m. (For postsecondary teacher educators only)**

Missouri Business and Marketing Teacher Educator Meeting

DoubleTree by Hilton - Aleck Scott Room

Room available for networking discussions. No presenter at this time.

For the postsecondary teacher educators across the state, this two-hour session will serve as the summer meeting. Topics will include certification and education program updates.

- **1:00 p.m. - 2:00 p.m. Afternoon Session 1**

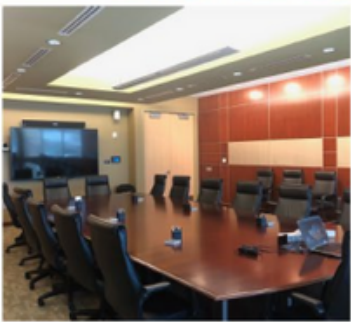
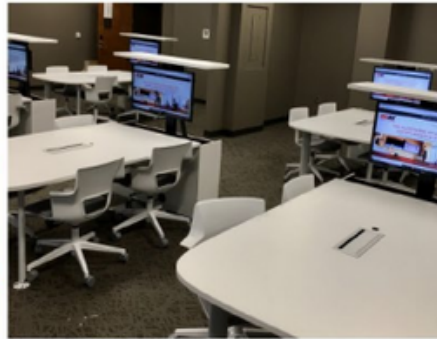
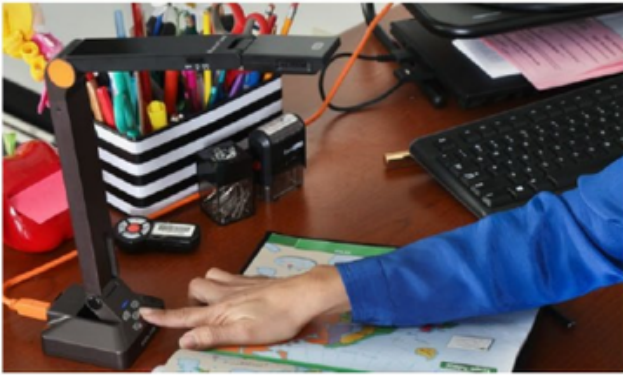
Not Just Photoshop: Adobe CC for your classroom and beyond

Room: Glendalough I-A

Erica Blum, Lindenwood University Professor

Are you aware there are over 20 desktop and mobile apps in the Adobe Creative Cloud? The subscription also includes access to licensed fonts and portfolio applications. How about the free Adobe apps that can also help in your classrooms? Join Adobe Certified Associate, Education Leader and Partner by design Erica Blum as she walks you through the best programs for your individual classes

Create engaging spaces to learn, work and share.



- AV Design & Integration
- AV Service
- Video/Audio Conferencing
- Interactive Displays & Walls
- Digital Signage
- Control Systems
- Projectors
- Virtual Meeting Solutions
- Classroom Audio
- Device Carts & Storage
- Flexible Furniture
- STEM/Makerspace
- 1:1 Devices, Bags & Cases
- Collaboration Solutions
- Temperature Tablets
- Sanitizing Solutions
- Screens
- Document Cameras
- Sound Systems
- Large Format Printers
- Control Systems
- Racks & Mounts
- Professional Development

KCAV

CONTACT US FOR ALL YOUR AUDIOVISUAL NEEDS
(800) 798-5228 | solutions@kcav.com | kcav.com



Time for a cup of coffee?

Visit the 'Chat Room' Networking Lounge now!
Glendalough

Conducting Market Research to Integrate Instructional Design into Education Programs

Room: Glendalough I-B

David Gomez, Lindenwood University Professor

To change the world around us, we need to change ourselves first. The department of Curriculum and Instruction, College of Education and Human Services, Lindenwood University, has successfully integrated Instructional Design into its programs by conducting a feasibility study that included job market research. This research resulted in the revision of an existing educational product, the M.A. in Educational Technology, and the creation of brand-new educational product, the M.S. in Instructional Design. Both educational programs are fully online, so the revision of the first and the creation of the latter had implications in terms of virtual classroom teaching and management, which required creative and sound solutions. A marketing strategy to reposition the M.A. in Educational Technology and to position the M.S. in Instructional Design is underway; it involves a coordinated effort from faculty members, the marketing, and admissions teams—to name but a few—but most importantly the creation of an institutional website and digital promotional materials aimed to make our target audience rethink what they think about Lindenwood University.

Learning Blade's NEW Intro to Coding Course

Room: Glendalough I-C

Michele Linch, Learning Blade

Join us to explore the new INTRO TO CODING resource in Learning Blade. Designed to provide an easy way to introduce 7th and 8th-grade students to coding. The course contains 20 hours of online and offline student learning including robust teacher lesson plans. Online lessons will include topics such as the role of computers in society, Concepts of basic algorithms, Text-based code elements including statements, Variables, and comments, Common hacking methods and means for combatting them, and many more! This session will also review how teachers across MO helped their students learn about high-demand STEM, CTE, and Computer Science careers by exploring the over 400 online lessons aligned to grades 5-9 standards!

SPECIAL TWO HOUR COMPUTER LAB SESSION: Part 1

Intro to Adobe Illustrator (must bring computer and have Adobe Illustrator Cloud ready for use during workshop)

Room: Glendalough III Bob Martin, MOREnet

One of the industry standard tools for graphic and web designers, marketing specialists, and more is Adobe Illustrator. Although it is packed with features and tools, there are a few fundamentals you can learn to help you work with it instead of fighting it. This basic, hands-on session will work from the ground up to show you how to build graphics, work with text, and more!



NOTE: If you have not stopped in to chat with our amazing SPONSORS in the 'Chat Room' (Glendalough II), now is your last chance to visit with them before they pack up and head home! Packing begins at 3 p.m.

Stop in and say 'thank you' for their support!

• **2:10 p.m. - 3:00 p.m. Afternoon Session 2**

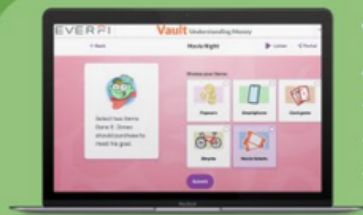
BONUS SESSION: Carousels in Networking Lounge

Room: Glendalough II (Networking Lounge)

Join some of the best Missouri Business and Marketing educators from across Missouri as they share their innovative teaching tips and tricks in three 15 minute sessions. You will choose three sessions to attend and move from table to table to pick up some great information to take back to your school to make your program more exciting and productive! Sessions include:

- *Building a FBLA Chapter from the Ground Up!*
- *Mock Interviews with Community Involvement*
- *Paint Parking Fundraiser*
- *Participating in the DECA Challenges*
- *Tips for Traveling with DECA*
- *Preparing for Chapter of the Year Submission*
- *How I Built It...Projects*
- *Selecting Your Chapter Officers*

EVERFI's Financial Literacy Resources



Vault: Understanding Money
4th - 6th Grade
- Financial Decision Making
- Credit & Borrowing
- Income & Careers



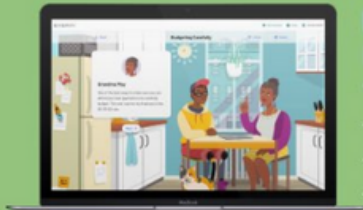
EVERFI: Financial Literacy
9th - 12th Grade
- Banking Basics
- Consumer Skills
- Managing Credit & Debt



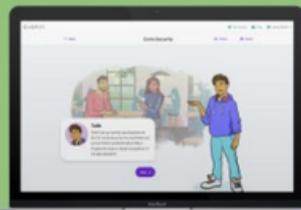
FutureSmart
6th - 8th Grade
- Budgeting
- Saving & Investing
- Risk vs. Return



Marketplaces: Investing Basics
9th - 12th Grade
- Financial Markets
- Economy & The Government
- Investing Portfolios



Pathways: Financing Higher Education
9th - 12th Grade
- ROI for Higher Ed
- Student Loan Basics
- Budgeting for Loans



Money Moves: Modern Banking & Identity Protection™
9th-12th Grade
- Identity Theft
- Banking Apps
- P2P Transactions

Explore how EVERFI's FREE resources can support your classroom!

Interested in learning more?

Attend one of EVERFI's sessions

Visit www.everfi.com/k-12

Email Heather Miller hmill@everfi.com

Not Just Photoshop: Adobe CC for your classroom and beyond (REPEAT SESSION)

Room: Glendalough I-A

Erica Blum, Lindenwood University Professor

Are you aware there are over 20 desktop and mobile apps in the Adobe Creative Cloud? The subscription also includes access to licensed fonts and portfolio applications. How about the free Adobe apps that can also help in your classrooms? Join Adobe Certified Associate, Education Leader and Partner by design Erica Blum as she walks you through the best programs for your individual classes.

Newest Tools for Prep Your Students for the Workplace

Room: Glendalough I-C

Dane Cockrell, KCAV

Brilliant Business Sponsorship Presentation KCAV is back again this year to share the newest technology for the classroom. Dane will share the equipment and resources available from KCAV to make your classrooms up-to-date to prepare your students for their future careers in technology.

SPECIAL TWO HOURS COMPUTER LAB SESSION: Continued - Part 2 (Must have attended Part 1)

Intro to Adobe Illustrator

Room: Glendalough III

Bob Martin, MOREnet

- **3:00 p.m. - 3:30 p.m. Afternoon Dessert Break**

Back of Glendalough III

- **3:13 p.m. - 4:00 p.m. DESE Update & Door Prizes**

Glendalough III

Cindy Shannon, DESE BMIT Director

Receive the latest updates for the 2022-2023 school year. Q & A session to follow. Conference door prizes drawn at this session.

Prize Sponsors:



- **3:30 p.m. MoACTE House of Delegates Meeting** - Representatives Only

Oasis Hotel & Convention Center – Coco Ballroom

- **4:00 p.m. - 4:30 p.m. MBEA Closing Session & Awards**

Room: Glendalough III

Thursday, July 28

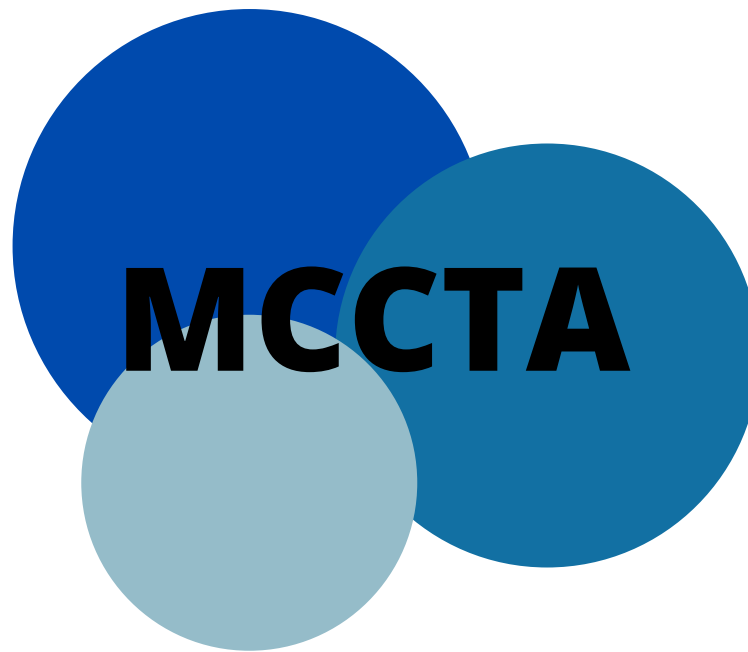
MOACTE Board Meeting - Oasis Convention Center

- **12:00 p.m. Missouri ACTE Board of Directors Meeting**

Oasis Hotel & Convention Center – Coco Ballroom - Lunch service begins at 11:30 a.m.



Missouri Business Education Association



2022 MISSOURI ACTE/MCCTA GENERAL SUMMER CONFERENCE PROGRAM

Locations: Oasis Hotel & Convention Center & The Doubletree Hotel
North Glenstone Ave. in Springfield, MO

Monday, July 25

- **9:30 a.m. Missouri ACTE Board of Directors Meeting**

Oasis Hotel & Convention Center – Sahara

Continental Breakfast begins at 9:00 a.m.

- **1:00 p.m. – 6:00 p.m. Missouri ACTE Conference Registration**

Oasis Hotel & Convention Center – Grand Ballroom

- **1:00 p.m. – 6:00 p.m. Exhibits Open**

Oasis Hotel & Convention Center – Grand Ballroom

- **2:00 p.m.-3:00 p.m. All Missouri ACTE Committee Meetings**

Oasis Hotel & Convention Center – Maui

- **5:30 p.m. -7:30 p.m. (at Doubletree) MCCTA Executive Committee Dinner Meeting**

Rathdangan 1

Tuesday, July 26

- **7:00 a.m. – 3:00 p.m. Exhibits Open**

Oasis Hotel & Convention Center, Grand Ballroom

- **7:00 a.m. – 3:00 p.m. Missouri ACTE Conference Registration**

Oasis Hotel & Convention Center, Grand Ballroom

- **8:00 a.m.-9:30 a.m. Opening General Session – Paradise Ballroom - MoEFACS, MCCTA, MTTA, MACS, TEAM, MHSE**

Welcome; President-Elect Speeches; Speaker – Morris Morrison

- **10:00 a.m.-11:30 a.m. Opening General Session – Paradise Ballroom - MVATA, MBEA, MCEA**

Welcome; President-Elect Speeches; Speaker – Morris Morrison

- **9:45 a.m. -10:30 a.m. All Division Sessions (During the Second Opening Session) -**
Session TBA

Sahara – Oasis Hotel & Convention Center

- **11:30 a.m. – 1:00 p.m. Lunch -local restaurants** – Info on www.mo-acte.org

50 Minute Sessions: Oasis Hotel & Convention Center

- **1:00 p.m.** See general programming
- **2:00 p.m.** See general programming
- **3:00 p.m.** See general programming
- **3:00- 4:30 p.m. (at Doubletree) “In the Weeds LIVE With DESE:”**

Rathdangan Ballrooms

Finance 101 with Andy Martin, Grants & Credentials with Lori Brown, Perkins V Transitions with Roger Barnes, CTE Certification with Mike Pantleo/Michelle Conrad

- **4:30 – 6:30 p.m. Missouri ACTE Awards Reception/New Professionals**

All attendees -The Barley House at Moon Town Crossing

Wednesday, July 27 NOTE: All MCCTA Sessions on Wednesday and Thursday will be at the Doubletree Hotel

- **8:00 a.m. – 3:00 p.m. Administrative Assistant’s PD Day**

Rathdangan 3

- **10:00 a.m. – 4:00 p.m. Sidebars, Discussions & Photo Shots**

Anne McLester Room

- **7:30 a.m.- 8:15 a.m. MCCTA BREAKFAST & ASSEMBLE**

Rathdangan Ballrooms

- **8:15 a.m.- 8:30 a.m. Welcome: Martin Hanley, Carri Risner & Jill Huntsman, Presidents of MCCTA**

Rathdangan 1 & 2

- **8:30 a.m.- 9:00 a.m. Kick-Off/Introducing our New Members**

Rathdangan 1 & 2

- **9:00 a.m.- 10:00 a.m. "Deep Dive into CTE Data: A Work Session"**

Rathdangan 1 & 2

(Part 1): Cheryl Reichert & Mike Griggs

- **10:00 a.m.- 10:15 a.m. Your Collaboration Time, with a Refreshing Break**

- **10:15 a.m.- 11:15 a.m. "Deep Dive into CTE Data: A Work Session"**

Rathdangan 1 & 2

(Part 2): Cheryl Reichert & Mike Griggs

- **11:15 a.m.-11:30 a.m. "Get Engaged! " Are You Smarter Than?"**

Rathdangan 1 & 2

Carri Risner, Jill Huntsman & Eric Schneider

- **11:30 p.m.- 11:45 p.m. Stretch Break**

- **11:45 a.m.- 12:30 p.m. LUNCHEON**

Rathdangan Ballrooms

- **12:30 p.m.- 1:15 p.m. "Legislative Panel: CTE Issues"**

TBD

Rathdangan Ballrooms

- **1:15 p.m. – 1:30 p.m. "Get Engaged! "Who Wants to Be A?"**

Rathdangan 1 & 2

Carri Risner, Jill Huntsman & Eric Schneider

- **1:30 p.m. – 2:15 p.m. "Effective Enrollment Practices for Finding the Right Fit for Kids"**

Rathdangan 1 & 2

Andrew Stewart & Staff

- **2:15 p.m. - 3:30 p.m. Table Talk Interactive Topics (Round 1)**

Rathdangan 1 & 2

CTSO Structure Discussion, Prepare Now for the Legislative Session, Health Careers & CTE, Effective CTE Recruitment Strategies, IRC's – Market Value Asset/Resume' Worthy?

- **3:30 p.m. - 3:45 p.m. More Collaboration Time, with another Refreshing Break**

- **3:45 p.m.- 5:15 p.m. MCCTA Cluster Meetings**

Secondary - Rathdangan 1

Post-Secondary - Rathdangan 3

Comprehensive HS - Rathdangan 2

- **6:00 p.m.- 6:45 p.m. Retiree's Recognition & Presentations**

Rathdangan 1-2

- **6:45 p.m.- 9:00 p.m. MCCTA Retiree's Celebration:**

Rathdangan 1-2

Entertainment by Administrative Leave

Appetizers, Finger Foods, Refreshments & Collaboration!

Thursday, July 28

NOTE: All MCCTA Sessions on Thursday will be at the Doubletree Hotel

- **7:30 a.m. - 8:30 a.m. Breakfast & Business Meeting**

Rathdangan Ballrooms

- **8:30 a.m. - 9:30 a.m. "Best Practice: ACT Career Pathways Coalition"**

Rathdangan 1 & 2

Phillip Witt & SW Team

- **9:30 a.m. - 9:45 a.m. Break**

- **9:45 a.m. - 10:15 a.m. "Get Engaged! "The Newly-wEd Game?"**

Rathdangan 1 & 2

Carri Risner, Jill Huntsman & Eric Schneider

- **10:15 p.m. - 11:15 p.m. Table Talk Interactive Topics (Round 2)**

Rathdangan 1 & 2

CTE Finance Calendar of Events, Health Careers (Remix), Strategies to Promote CTE Certificates, Career Center Advisory Teams, Motivating CTE Students & Teachers

- **11:15 a.m. - 11:55 a.m. MCCTA/DESE Forum: What are Your Concerns? Gathering Your Questions & Discussing Solutions!**

Rathdangan Ballrooms

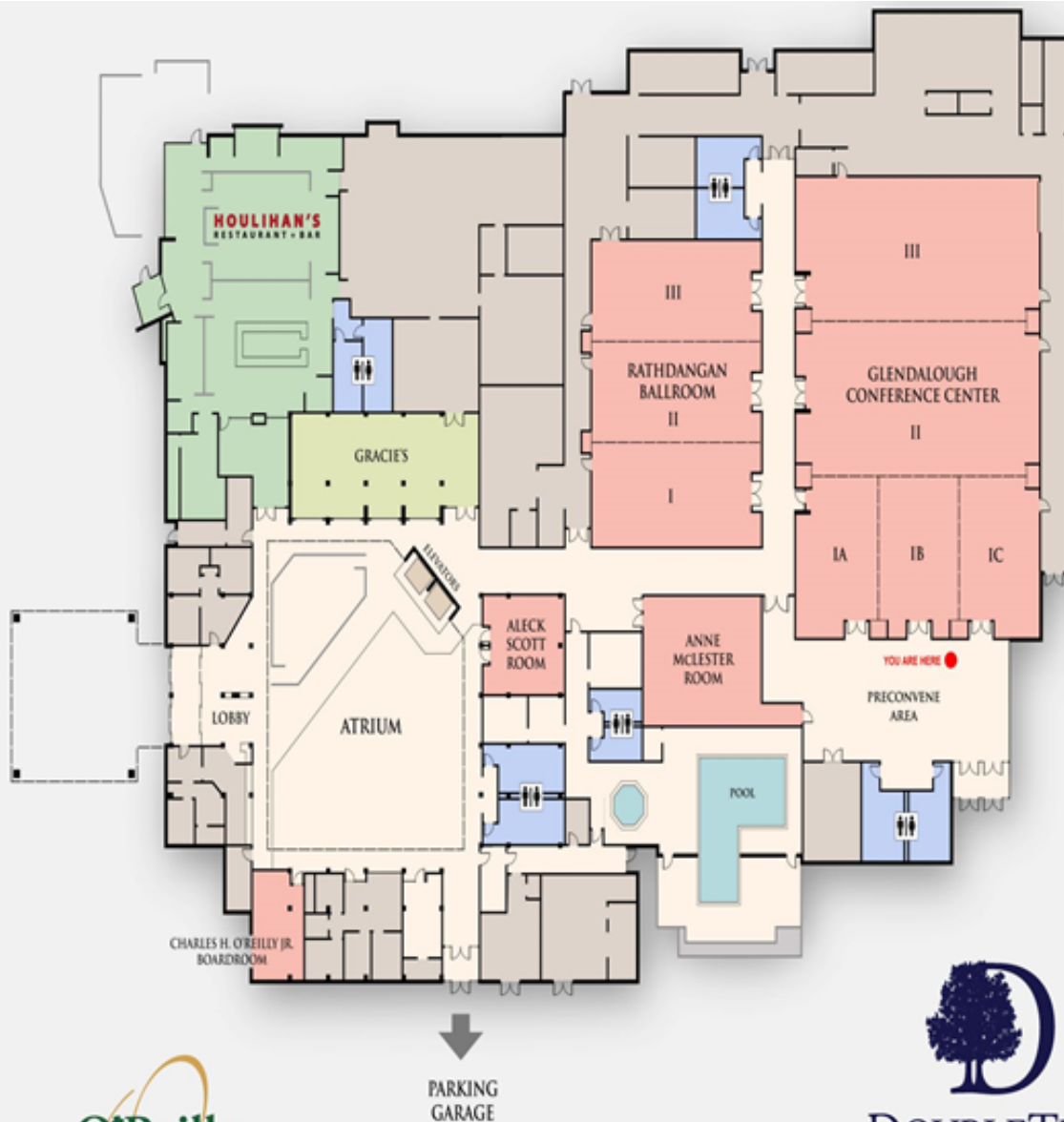
- **11:55 a.m. - 12:00 p.m. Conference Debriefing and Closing**

Rathdangan Ballrooms

- **12:00 p.m. Missouri ACTE Board of Directors Member's Meeting**

Oasis Hotel & Convention Center –Coco Ballroom

Lunch service begins at 11:30 a.m.





MoEFCS Program Guide

- All MoEFCS sessions on Monday and Wednesday are held at Missouri State University's Glass Hall, 851 S John Q Hammons Pkwy, Springfield, MO 65897 unless otherwise noted.
- Sessions presented by Chef Daniel Pliska will be held at Ozark Technical College, 1001 East Chestnut Expressway, Information Commons Building, Room 106
- All MoEFCS sessions on Tuesday will be held at Moontown Crossing, 3060 N Kentwood Ave, Springfield, MO 65803
- All ACTE meetings and ACTE Conference Registration will be held at the Oasis Hotel & Convention Center, 2546 N. Glenstone Ave. Springfield.



Diamond sponsors:

University of Central Missouri
Missouri State University
College of Education
Missouri State University
College of Business/Fashion
Missouri State University,
Department of Childhood
Education and Family Studies
B-Sew Inn
Department of Elementary
and Secondary Education



Platinum Sponsors:

Everfi

Gold Sponsors:

Missouri State University FCCLA

Silver Sponsors:

Missouri State University
Hospitality Leadership
Department

Bronze Sponsors:

Fellers Food Service
Equipment/Restaurant
Marketplace
Agriculture Education on the
Move
Show-Me Dough Fundraising
Missouri Restaurant Association

Conference basket raffle options, benefiting the MoACTE PAC Fund found at:

https://docs.google.com/presentation/d/1gnM7ACeZaP4_AHaPukpYDRW2CMiPpiu-WzAOag3Qs5s/edit#slide=id.g1184d12174c_0_0

Visit this site to add yourself to the Missouri FCS Teacher Directory:

https://docs.google.com/forms/d/e/1FAIpQLSfKPLUux_5UbKQaJmqw_z7_xOqKUx4WVlxFxi83fUayh33NCg/viewform

Full Descriptions for all sessions and links to resources can be found at:

<https://docs.google.com/document/d/1zKuPbZijWl1lubHtU6krlhiUmxGXoSKE-m4IH45RLig/edit>

Monday, July 25

- **8:30 a.m. - 9:30 a.m. Registration**–Glass Hall Atrium

Pre-registration and payment is required for all Monday morning sessions, as well as for the Monday afternoon sessions with a fee. Check in at our welcome table in the atrium.

- **9:00 a.m. - 10:30 a.m. Let's Talk About ProStart**

Glass 226

Leone Herring

This session will explore:

*What is ProStart, advantages of offering ProStart, ProStart curriculum, implementing ProStart in your building/district, professional Development for ProStart educators, grants available, ServSafe certifications, 2022-2023 updates and event schedule and answers to your questions. **Cost is \$10 per participant.***

- **9:00 a.m. - 11:45 a.m.**

FCS Entrepreneurship: Cooking, Baking and Cricut Designing Up Some Fun

Glass 354

Christine Hollingsworth and Beth Beattie

*Designing entrepreneurship curriculum that teaches career-readiness skills and makes the students smile. Here's the vetted projects, tips, and techniques you need to bring Entrepreneurship success to your FCS department. **Cost is \$25 per participant***

Hands On Sewing Workshop

Glass 353

Josie Baird of B-Sew Inn

*This workshop is specifically designed for FCS Educators who need to brush up on their sewing skills but also want to have fun! We'll cover basic instruction on the operation of sewing machines commonly utilized in FCS Classrooms, plus learn how to spot a successful classroom project. This hands-on workshop will allow you to practice stitch types and sewing techniques as we create some fresh classroom projects. Machines and kits will be provided. This session is limited to 24 participants. **Cost is \$10 per participant***

Let's Get Cricut-ing!

Glass 261

Krystle Gremaud

Have a Cricut but not sure what to do with it? Join me to learn the various self-taught tips and tricks I've learned. In this session I will share with you how to create your own SVG files, import your own text, create layers, and manipulate Design Space images to create exactly what you're wanting! I will also show you just what the heck all those tools do! Please note this session uses Cricut Design Space and is intended for Cricut users. Information presented will not transfer to Silhouette users. Participants will leave with two completed projects. Cost is \$30 per participant

Beyond Lectures & Notes

Glass 342

Amy Harkey

Project ideas for different FCS courses that reinforce units taught. You'll walk away with lesson plans, rubrics, and examples. Cost is \$10 per participant

Supporting Diverse Learners Through Differentiation in the FCS Classroom

Glass 340

Kristi Hodson

This workshop will explore resources and ideas to benefit all students, with an emphasis on supporting students from special populations. Whether you work with Special Education (IEP/504), ELL, or At-Risk students, you will walk away empowered to meet students where they are. Cost is \$10 per participant.

- **11:10 a.m. - 12:00 a.m.**

Elevate Presentation with Vegetables and Garnishes

Ozark Technical College, 1001 East Chestnut Expressway, Information Commons Building, Room 106

Chef Daniel Pliska, CEC AAC

*In this session learn to use common garden vegetables to create beautiful plate and platter presentations with basic vegetable carvings. Philosophy for plate design and use of seasonal vegetables will also be discussed to create a maximum visual effect. Audience participation will be encouraged so bring your favorite paring knife if you would like to be hands-on in this session. Session limited to the first 20 participants. **Cost is \$10 per participant***

- **11:45 a.m. - 1:30 p.m.**

New & Returning Teachers Luncheon

Meeting will start in Glass 486 and will move to Glass 354 after lunch.

Beth Beattie

*Are you new to teaching Family and Consumer Sciences? If so, this session is for you! We will discuss places to find the answers to all of your just getting started questions and give you a chance to meet people who can help you throughout the year. **Cost is \$35 per participant.***

- **12:00 p.m. - 1:30 p.m. Lunch** (included with those registering for a Monday morning session)

Glass 486

**The Vendor Fair is free to anyone registered for the MoACTE/MoEFCS Conference.
Come visit our sponsors in the Glass Atrium between 12:00-1:30!**

- Fellers Food Service Equipment/Restaurant Marketplace
- Agriculture Education on the Move™ (a program of Missouri Farmers Care Foundation)
- EVERFI
- B-Sew Inn
- Missouri Restaurant Association / ProStart
- Show-Me-Dough Fundraising
- MSU Department of Childhood Education and Family Studies
- MSU COB and Department of Merchandising and Fashion Design
- MSU College of Education
- MSU Hospitality Leadership
- University of Central Missouri

• **1:10 a.m. - 2:00 p.m.**

Creating Elegant Popular Pastries with Pate au Choux Part 1

Ozark Technical College, 1001 East Chestnut Expressway, Information Commons Building, Room 106

Chef Daniel Pliska, CEC AAC

Made with only five ingredients this classic French pastry dough is used to make Eclairs, Cream Puffs, and many other elegant pastry café favorites. In the first part of this two-part session learn how to prepare, pipe, and bake four different classic shapes and how to make pastry cream and buttercream used for filling the pastries.

In the second session learn how to create chocolate ganache and Chantilly cream to fill, glaze and garnish the baked choux pastries. The pastries that will be demonstrated are Chocolate eclairs, Paris Brest, Cream Puffs, and Pastry Swans.

Session is limited to 20 participants and is offered at no charge.

• **1:30 a.m. - 3:00 p.m.**

Making Learning Types of Fabrics Fun

Glass 342

Amy Harkey

Teach fabric properties as a hands-on activity, integrating math and science skills. This session is offered at no charge.

SHIBORI: A Japanese technique of resist tie-dyeing

Glass 102

Angela Amtower

This session will focus on the Japanese technique of tie-dyeing called Shibori. Shibori is one the oldest resist dyeing methods using indigo. There's an infinite number of ways one can bind, fold, twist, or compress cloth for shibori. Join this session to add a hands-on element to your Apparel and Textiles course when covering fabrics and fabric finishes. Participants will complete and take tie-dye samples with them. Cost is \$35 per participant.

Fashion Illustration/Designing a Line Using Fashion Croquis

Glass 261

Lori Krug

In this session you will learn how to utilize croquis for fashion illustrations and how to develop a fashion line. These skills can be incorporated in classroom projects and STAR events. Cost is \$35 per participant, which includes illustration markers and a light board for each participant to keep.

Lessons for All Ages

Glass 428

Katie Mayberry & Jane Poole

Do you ever struggle with how to differentiate lessons where you are covering some of the same standards in multiple courses? You don't want to lose students who may have taken one of your other classes, but some standards you just have to teach at each level. You may even have a comprehensive class that covers some of the same standards as other courses. Knowing where to start can be overwhelming. We are here to help! In this session we are going to explore how to teach a variety of standards in different ways and at both middle and high school levels! This session is offered at no charge.

Creating a Positive Climate and Culture in Your School and Classroom

Glass 429

Sarah Sutton, Jenny Cummins, Julie Gugel

We will present ideas and strategies used within our building to create a positive climate and culture. Here are some examples of what we plan to include: resources that can be taken back to be immediately used, strategies and activities for SEL, Intervention Contracts, Assessment methods, annotated notes for monitoring student progress, engaging methods of assessment, and gaming strategies for building knowledge and team community (example: Gimkit). We will do this through movement, stations, hands on activities, and discussions.

Examples could also include: campfire, analogies, starburst game, dollar bill game, and various strategies we have learned from our coordinator from adaptive schools. Participants will receive assorted materials to keep; please bring a charged device. Cost is \$10 per participant.

Interior Design Projects

Glass 430

Kailey Grapes

Interested in discovering new projects for your Interior Design class? Join me for a hands-on experience as we walk through different projects that can be used for beginner, intermediate, or advanced level courses. We will explore options that will best suit your students and course, varying from large scale PBL projects to short mini-projects that can be incorporated into any unit. Walk away with ready to go lesson plans that are ready for the new school year! Participants will leave with materials they can use to recreate the lessons in their classes. Cost is \$15 per participant.

Creating Instructional Videos

Glass 340

Darci Friberg

Adobe Creative Cloud Express (formerly known as Adobe Spark) is a free, multimedia tool for creating impressive and attractive multimedia images and videos. Whether you are creating the content, or you want students to create their own, this is an awesome tool with lots of potential. In this session, you will learn to create your own content and how to start using this cool resource with ready to use lesson ideas! This session is offered at no charge.

Addressing Special Needs in the FCS Classroom: Helping Students Be Successful

Glass 226

Suzie Dudenhoeffer

How to address IEP's and 504s - simple, tried and true practices for the FCS classroom. This session is offered at no charge

4 Square Handbag Project

Glass 353

Dawn Sommers

The 4-Square Handbag project was created to refine and develop skills for the instructor and students. The design and construction of this handbag was created to use industry concepts, terminology and skills. This project can be created in the classroom by using the written pattern to help students with reading instructions following industry terminology. A helpful video tutorial is also available on my website for instructors and students to view. This hands-on workshop will give the instructor confidence and helpful suggestions when using the project in their classroom. Participants will need to bring a sewing kit. This session is limited to 24 participants. Cost is \$30 per participant. Participants will complete and take the handbag with them. Special thanks to B-Sew Inn for providing the sewing machines for this session!

- **2:10 p.m.- 3:00 p.m. Creating Elegant Popular Pastries with Pate au Choux Part 2**

Ozark Technical College, 1001 East Chestnut Expressway, Information Commons Building, Room 106

Chef Daniel Pliska

Learn how to create chocolate ganache and Chantilly cream to fill, glaze and garnish the baked choux pastries from session 1. The pastries that will be demonstrated are Chocolate eclairs, Paris Brest, Cream Puffs, and Pastry Swans.

Session is limited to 20 participants and is offered at no charge.

- **1:00 p.m. - 6:00 p.m. Missouri ACTE/MoEFCS Conference Registration**

Oasis Hotel & Convention Center - Grand Ballroom

- **1:00 p.m. - 6:00 p.m. Missouri ACTE Exhibits Open**

Oasis Hotel & Convention Center - Grand Ballroom

- **2:00 p.m. - 3:00 p.m. All Missouri ACTE Committee Meetings**

Oasis Hotel & Convention Center - Maui Ballroom

- **6:00 p.m. - 9:00 p.m. Evening Social Event, Wonders of Wildlife**

500 W. Sunshine St., Springfield

We're teaming up with Wonders of Wildlife and 417 Charcuterie for an evening of food and fun! This event is the perfect opportunity to enjoy some food and learn a few new skills. The registration fee includes a tour of the museum prior to the class, a board that you will wood burn, an individual box of hors d'oeuvres, and one drink voucher with the option to purchase more drinks.

Registration is Required at

<https://17197.blackbaudhosting.com/17197/Wood-Burning--Charcuterie-25Jul2022>

Charcuterie + Wood Burning Class (3 hours)

- Register ASAP Limited to 50 participants
- Fee \$60
- Must register through Wonders of Wildlife (WOW):
- (WOW members can login and register. Non-members may register as a guest.)

- **6:00 p.m. - 8:00 p.m. Evening Social Event, Big Shots Golf**

1930 E. Kearney St., Springfield

Come spend an evening relaxing and playing some golf. No experience required! Or you can just come enjoy dinner and watch everyone else show off their skills! The registration fee includes buffet-style dinner and 2 hours of game play. This is another networking evening event sponsored in part by Missouri State University, Department of Childhood Education and Family Studies.

Registration is Required at <https://forms.gle/paFAdrGZCR8UPQgh9>

Big Shots Golf and Social Event (2 hours)

- Register ASAP Limited to 50 participants
- Fee \$20
- Must through Google Form and submit payment through Link or mail check.



Tuesday, July 26

All MoACTE meetings and MoACTE Conference Registration are held at the Oasis Hotel & Convention Center, 2546 N. Glenstone Ave., Springfield.

All MoEFCS events will be held at The Barley House at Moontown Crossing, 3060 N. Kentwood Avenue, Springfield, MO 65803

- **7:00 a.m. - 3:00 p.m. Missouri ACTE Conference Registration & Exhibits Open**

Oasis Hotel & Convention Center - Grand Ballroom

- **8:00 a.m. - 9:30 a.m. - Missouri ACTE Opening Session**

(Paradise Ballroom)

- **9:30-10:00 a.m. Registration**

The Barley House at Moontown Crossing, 3060 N Kentwood Ave, Springfield, MO 65803

- **10:00 a.m.-11:00 a.m. MoEFCS Business Meeting sponsored by B-Sew Inn**

Election of Officers, Committee Reports, Realityworks Basket Raffle Drawing, must be present to win, Debra Price-Scheppmann, 2021-22 MoEFCS President



- **11:00 a.m.- 12:30 p.m. MoEFCS Awards Ceremony and Luncheon sponsored by University of Central Missouri and Missouri State University, College of Education**

Please join us as we spotlight professionals who have gone above and beyond this year in Family and Consumer Sciences

The Barley House at Moontown Crossing, 3060 N Kentwood Ave, Springfield, MO 65803



- **1:00 p.m. - 4:00 p.m. Missouri ACTE Afternoon Sessions**

(Oasis) Go to this link for session times and descriptions.

https://docs.google.com/document/d/1GLhPFdsBIXNu_Hwf-DC8PkhIOuQJHZXk9_0uGOEH5z4/edit

- **4:30 p.m. - 6:30 p.m. - MOACTE Awards Reception/New Professionals**

The Barley House at Moontown Crossing, 3060 N Kentwood Ave, Springfield, MO 65803

- **7:00 p.m.-9:00 p.m. Murder Mystery Networking Dinner - A Taste of Mystery! Sponsored in part by Missouri State University FCCLA**

The Barley House at Moontown Crossing, 3060 N Kentwood Ave, Springfield, MO 65803; Fee \$25; pre-registration required

Join your MoEFCS professionals for a fun-filled evening full of networking opportunities! Includes dinner, fellowship, and a bit of mystery as we work together to solve this vintage Napa Valley mystery!



Wednesday, July 27

Show your spirit! Wear your college shirt or a FCS related shirt, jeans, and tennis shoes to Wednesday's sessions!

Full session descriptions and details can be found at

<https://docs.google.com/document/d/1zKuPbZijWl1IubHtU6krIhiUmxGXoSKE-m4IH45RLig/edit>

- **7:30 a.m. - 9:00 a.m. Continental Breakfast and FCS Teacher Networking sponsored by Missouri State University College of Business and Merchandising and Fashion Design**

Glass Hall 486

- **8:00 a.m. - 11:00 a.m. MoACTE Late Registration**

Oasis Hotel & Convention Center.

MoEFCS welcomes you at Glass Atrium for MoEFCS sessions.



- **8:30 a.m.- 9:00 a.m. 2022-23 MoEFCS Board Meeting**

Glass 353

- **9:00 a.m.- 1:00 p.m. Welcome Center/Pre-Order Merchandise Pickup; MoEFCS Public Relations Committee**

Glass Atrium

- **9:15 a.m.- 10:00 a.m. DESE Updates; Sponsored by the Department of Elementary and Secondary Education, Family Consumer Sciences and Human Services**

Glass Hall 101

Led by Theresa Struempf, Director of Family Consumer Sciences and Human Services, DESE

Come visit about DESE updates, current issues, fall professional development offerings, available assessments and much more.



- **10:10 a.m.- 11:00 a.m. Concurrent Sessions**

Round 1

Glass Hall Classrooms (Go to this link for session options, descriptions, and resources)

<https://docs.google.com/document/d/1zKuPbZijWI1lubHtU6krIhiUmxGXoSKE-m4IH45RLig/edit>

- **11:10 a.m. - 12:00 p.m. Concurrent Sessions Round 2**

Glass Hall Classrooms (Go to this link for session options, descriptions, and resources)

<https://docs.google.com/document/d/1zKuPbZijWI1lubHtU6krIhiUmxGXoSKE-m4IH45RLig/edit>

- **12:15 p.m. - 1:15 p.m. Networking Luncheon; included with registration fee--all are invited to attend. Sponsored by Missouri State University, College of Business Merchandising and Fashion Design**

Lunch will be provided at Blair-Shannon Dining Hall on the MSU campus



- **1:25 p.m. - 2:15 p.m. Concurrent Sessions Round 3**

Glass Hall Classrooms (Go to this link for session options, descriptions, and resources)

<https://docs.google.com/document/d/1zKuPbZijWI1lubHtU6krIhiUmxGXoSKE-m4IH45RLig/edit>

- **2:20 p.m. - 3:10 p.m. Concurrent Sessions Round 4**

Glass Hall Classrooms (Go to this link for session options, descriptions, and resources)

<https://docs.google.com/document/d/1zKuPbZijWI1lubHtU6krIhiUmxGXoSKE-m4IH45RLig/edit>

- **3:15 p.m.- 3:35 p.m. Best Practices Session 1**

Ready for a refresh? Attend one of the twenty minute sessions for the “Best-of-the-Best” practices from your fellow FCS teachers! Walk away with fresh ideas, fabulous resources and fantastic tools for your tool box! We have a variety of topics to pick from, everything from Child Development and Culinary, to Personal Finance and FCCLA, and many more! Simply choose the two that best fit your needs!

Glass Hall Classrooms (Go to this link for session options, descriptions, and resources)

<https://docs.google.com/document/d/1hPUdPO6AbFGZx9Tu1F6Xa5ZnNSZ45S54TrN1Vr1OYrs/edit>

- **3:40 p.m.- 4:00 p.m. Best Practices Session 2**

Glass Hall Classrooms (Go to this link for session options, descriptions, and resources)

<https://docs.google.com/document/d/1hPUdPO6AbFGZx9Tu1F6Xa5ZnNSZ45S54TrN1Vr1OYrs/edit>

- **4:10 p.m.- 4:30 p.m. Basket drawings; PAC drawings; final announcements**

Glass 101

Leadership Information and Resources

2021-2022 Board of Directors

President: Debra Price-Scheppmann

President-Elect: Beth Beattie

Past-President: Tracey Eatherton

Secretary: Amy Harkey

Treasurer: Michelle Brinkley

Awards & Recognition: Hali Hill, Chair, Christy Johnson, Christine Miller

Professional Development: Tracey Eatherton, Chair, Kailey Grapes, Darci Friberg, Hannah Heller

Legislative: Karen Mason, Chair, Suzie Dudenhoeffer, Erica Libbert

Special Functions: Sandy Pizzo, Chair, Erin Armstrong, Krystle Gremaud, Angela Amtower

Registration: Jocelyn Lowry, Chair, Emily Daniel, Katie Mayberry, Marissa Heyer

Public Relations: Lori Krug, Chair, Tara Vignola, Amy Wibbenmeyer, Elicia Chen

Membership: Jordan Belcher, Chair, Andrea Carter, Mitzi Kelly, Jane Poole

MoEFCS Website: <https://www.acteonline.org/moefcs/>

Follow us on Facebook!: <https://www.facebook.com/moefacs/>

MoEFCS Webstore: <https://designcenter.premiumspecialties.com/moefcs/shop/store-closed>



Missouri Health Science Education Division Agenda

Monday, July 25

- **9:30 a.m. Missouri ACTE Board of Directors Meeting**

Oasis Hotel & Convention Center - Sahara

- **1:00 p.m. – 6:00 p.m. Missouri ACTE Conference Registration**

Oasis Hotel & Convention Center – Grand Ballroom

- **1:00 p.m. – 6:00 p.m. Exhibits Open**

Oasis Hotel & Convention Center – Grand Ballroom

- **2:00 p.m. – 3:00 p.m. All Missouri ACTE Committee Meetings**

Oasis Hotel & Convention Center – Maui Ballroom

Tuesday, July 26

- **7:00 a.m. – 3:00 p.m. Exhibits Open**

Oasis Hotel & Convention Center – Grand Ballroom

- **7:00 a.m. – 3:00 p.m. Missouri ACTE Conference Registration**

Oasis Hotel & Convention Center – Grand Ballroom

- **8:00 a.m. – 9:30 a.m. Opening General Session (MHSE)**

Oasis Hotel & Convention Center – Paradise Ballroom

- **9:45 a.m. – 10:30 a.m. All Division Sessions**

Oasis Hotel & Convention Center – Maui, Coco & Fiji

- **1:00 p.m. – 3:00 p.m. All Division Sessions**

Oasis Hotel & Convention Center – Maui, Coco & Fiji

- **4:30 p.m. – 6:30 p.m. Missouri ACTE Awards Reception/New Professionals**

The Barley House at Moon Town Crossing

Wednesday, July 27

- **8:00 a.m. – 11:00 a.m. Missouri ACTE Late Registration**

Oasis Hotel & Convention Center Glass Lobby

- **8:00 a.m. – 9:00 a.m. MHSE Board of Directors Welcome & Business Meeting/DESE Update**

Oasis Hotel & Convention Center – TBA

- **9:00 a.m. – 12:00 p.m. Health Science Activities in a Pinch**

Oasis Hotel & Convention Center – TBA

- **12:00 p.m. – 1:30 p.m. Recognition Lunch**

Oasis Hotel & Convention Center – TBA

- **1:30 p.m. – 3:30 p.m. Round Table Discussion**

Oasis Hotel & Convention Center – TBA

Each session will be 30 minutes in length and will allow an opportunity to network with colleagues. Schedule will allow participants to attend all breakout sessions.

IDEAS: Health Science Structural Framework; CTSO Integration; Recruitment Strategies; Post-Pandemic Clinical Rotations; and/or Classroom Management Techniques

- **3:30 p.m. – 4:30 p.m. MHSE Networking Reception**

Oasis Hotel & Convention Center – TBA

- **3:30 p.m. House of Delegates Meeting**

Oasis Hotel & Convention Center – Coco Ballroom

Thursday, July 28

- **8:00 a.m. – 9:30 a.m. MHSE Cluster Meetings**

Allied Health, Nursing, Health Science

- **9:45 a.m. – 10:45 a.m. Missouri AHEC Presentation**

- **10:45 a.m. – 11:00 a.m. MHSE Conference Wrap-Up**

- **12:00 p.m. Missouri ACTE Board of Directors Meeting**

Oasis Hotel & Convention Center – Coco Ballroom



Missouri Trade And Technical Association

Monday, July 25

- **4:00 p.m. MTTA Pre-Conference Board Meeting**

Oasis Convention Center

Bora Bora

Tuesday, July 26

- **10:00 a.m. MTTA General Session/ Business Meeting/ Reception**

Grilled Sirloin with Chipotle Demi Sauce - Signature Salad, Chef's Starch and Vegetable, Chef's Dessert, Warm Rolls with Butter, Freshly Brewed Regular & Decaffeinated Coffee & Iced Tea.

Vegan and Vegetarian options available (please let us know at registration table)

Sahara A & B

MTTA Member Attendance is Required (Door Prizes)

**CLUSTER MEETINGS Architecture and Construction Art, AV and Communication
Information Technology Law, Public Safety, and Security Manufacturing
Transportation, Distribution, and Logistics Will take place at roundtables.**

- **2:30 p.m. Law, Public Safety, and Security - Criminal Justice Instructors of Missouri - (CJIM) Curriculum Development**

Rodger Bowers

Oasis Convention Center

Criminal Justice Instructors of Missouri Annual Conference – Focus for the year is on developing a common curriculum for the entire state.

All Criminal Justice Instructors invited to attend

- **3:00 p.m. Transportation, Distribution, and Logistics**

Rodger Bowers

Oasis Convention Center

MCRIA-Missouri Collision Repair Instructors Association Regular Business Meeting and Roundtable

- **3:00 p.m. Transportation, Distribution, and Logistics**

Automotive Instructors
Oasis Convention Center

Wednesday, July 27

Engineering and Technology

- **9:00 a.m. (All Day) Introduction to Advanced Driver Assist Systems**

Scott Long, Regional Field Instructor - Hunter Engineering Company
Oasis Convention Center

This course will introduce common types of Advanced Driver Assist Systems (ADAS) currently on late model vehicles. By the end of the course, you will be able to identify common types of Advanced Driver Assist System types, components and common relearn procedures. Course delivery is lecture with video support.

Arts, AV and Communication

- **9:00 a.m. Certification Round Table**

Karen Quist, Territory Manager – Certiport
Oasis Convention Center

This Round table will be set up to discuss all things Certification. What are you using? Do you like it? What help do you need to be successful? We will be joined by Certiport but we welcome all certification discussion.

- **10:00 a.m. Let's Talk Board Game Design**

Dorothy Loges, Graphic Design Print Technology Instructor
Oasis Convention Center

Dorothy is a Graphics/Print instructor at Dallas County Technical center. She will be discussing her board game lesson and how it works in the classroom. Students start by researching board games. Then go through many steps to create a functioning board game reviewed and critiqued by students.

- **11:00 a.m. Student Enterprises with Angi**

Angi Yowell, Graphic Design Instructor
Oasis Convention Center

Angi teaches at Rolla Technical Center where her and her students run a full design shop where services include, screen printing, sublimation, vinyl, wide format printing and design for the school and community. She will be sharing how she organizes and integrates all of this into her work-based learning curriculum.

Transportation, Distribution, and Logistics

- **8:00 a.m. – 4:00 p.m. OTC Campus, Collision Repair Classroom**

KECO glue pull systems
Information will be given out at MCRIA meeting

- **9:00 a.m. What's New In Diagnostics/ SNAP-On Certifications**

Tim Nelson, Diagnostics Sales Manager & Scott Williams, Industrial Account Manager
Oasis Convention Center

A overview of what's new in the world of Snap-On Vehicle Diagnostics platforms. Included is an overview of Snap-On Educational Certification Programs, certified by NC3. We will have additional personnel on hand to introduce who support Snap-On Education in the state of Missouri. Joe Sainz, Cliff Head and Tom Garvin.

Manufacturing

- **10:00 a.m. AWS Certification & Educational Resources**

Efram Abrams, Senior Sales Executive & American Welding Society
Oasis Convention Center

The American Welding Society (AWS) is well known in the welding industry as the go to place for welding Certifications, Scholarships/Grants, Standards and Training. The presentation will speak to the value that AWS and its programs can bring to welding schools and their students, companies and their employees and members of the community at large.

MTTA Luncheon

- **12:00 p.m. MTTA Luncheon – Buffet Style – Oasis Coco Ballroom**

Sliced BBQ brisket, BBQ Chicken Breast, Pulled Pork & Sweet Corn, Mustard Baked Beans, Deviled Egg Potato Salad, Horseradish and Cabbage slaw, Assorted Rolls and Buns.

Vegan and Vegetarian options available (please let us know at registration table)

All Members Welcome

Architecture and Construction

- **1:00 p.m. Grizzly Plant Tour -Everyone Welcome**

Robert Studdard, Outside Sales School Programs
Grizzly Industrial• 1815 W Battlefield Rd • Springfield MO 65807

Robert will be giving a presentation about the equipment available to schools by Grizzly and the discounts they can offer to schools. This will include a walkthrough of the showroom and the factory. This program will be open to the manufacturing, TEAMS, construction and any others who are interested in the information.

Arts, AV and Communication

- **1:00 p.m. Let's Wrap a Car!**

Leah Kimberly, Owner/Designer
Red Line Kustomz • 380 E State Hwy CC E102 • Nixa, MO

Leah's company is Redline Kustomz, we are a veteran owned and operated business since 2018. Leah and James are car enthusiasts who saw a market that lacked quality vinyl wrap and wanted to fill that void. During this instruction we will be wrapping a hood and if time permits a roof in cheetah wrap vinyl. You will learn the basic squeegee methods to lay flat panels, glass out large panels, and trim edges. This will be a hands on presentation! Join us at their shop for the afternoon!

Thursday, July 28

- **9:30 a.m. MTTA Post Conference Planners Meeting -Chairs, Chair-Elects and Program Planners Attend Location**

Oasis Convention Center - Sahara B

- **10:30 a.m. MTTA Executive Board Post Conference Meeting/Luncheon & Board Members, Including Chair and Chair-Elects from each**

Oasis Convention Center - Sahara

Cluster & Smoked Turkey Croissant, peppered bacon, swiss cheese, red leaf lettuce, ripe tomato and roasted red pepper aioli on a flaky croissant. & Vegan and Vegetarian options available (please let us know prior to meeting)

All TEAM activities will be at the Oasis convention center. Our schedule and more information will be given out at registration.



Missouri Vocational Agriculture Teachers Association

Monday, July 25

**MSU Darr Ag Center, 2401 S. Kansas Expy,
Springfield, MO 65807**

- **9:00 a.m. – 12:00 p.m. Pesticide Certification Training**

Dr. Halleran, MU Extension

Darr Ag Center Room 116

(Pre-registration required – Cost \$30)

- **9:00 a.m. – 3:00p.m. MO Bovine Reproduction Workshop- OTC, Richwood Valley Campus**

(Pre-registration required)

- **10:00 a.m. – 12:00 p.m. MDC Trapshooting Coaching Clinic**

Andy Dalton Shooting Range

(Pre-registration required)

- **9:00 a.m. - 12:00 p.m. FFA Relations/CDE Committee Meeting**

Darr Ag Center Room 130C

- **9:00 a.m. - 12:00 p.m. State Degree Handbook Committee Meeting**

Darr Ag Center Room 130D

- **9:30 a.m. Missouri ACTE Board of Directors Meeting**

Oasis Conference Center – Sahara Room

- **1:00 p.m. – 4:00 p.m. Committee Meetings**

Darr Center

MVATA Auditing Committee – Room 108

ACT Committee – 116

FFA Relations-CDE Committee – 130C

Curriculum and Resources Committee – 130A

MVATA Legislative Committee – 130D

MVATA Adult Education Committee – 130B

Professional Development Committee – 130F

- **1:00 p.m. – 6:00 p.m. Missouri ACTE Registration and Visit Exhibits**

Oasis Hotel & Conference Center – Grand Ballroom

- **2:00 p.m. – 3:00 p.m. All Missouri ACTE Committee Meetings**

Oasis Hotel Conference Center – Maui Ballroom

- **4:30 p.m. – 8:00 p.m. MVATA Executive Committee Meeting (Current & Incoming MVATA Officers)**

130 D

- **4:00 p.m. – 8:00 p.m. 1st Year Teachers (Protégés) & Mentors / 2nd Year Teachers (Protégés Only)** Dinner & Seminars – Required Session – Professional Dress Requested

Darr Center 130 A, B, E, F

First Year Protégés /Mentors – Room 130 A/B

Second Year Protégés Only – Room 130 E/F

(Beginning Teacher Directory Photos will be taken.)

- **5:30 p.m. – 6:15 p.m. Exe. Committee, 1st Year Teachers & Mentors / 2nd Year Teachers Dinner**

Darr Center -- Dinner Seitz Fundraising & iCEV

- **6:00 p.m. – 7:00 p.m. Resolutions Committee**

Darr Agricultural Center, Room 116

MoACTE - "Show Me Vision"

Tuesday, July 26

- **7:00 a.m. – 3:00 p.m. Missouri ACTE Exhibits Open**

Oasis Conference Center, Grand Ballroom

- **7:00 a.m. – 3:00 p.m. Missouri ACTE Conference Registration**

Oasis Conference Center, Grand Ballroom

- **8:00 a.m.- 9:30 a.m. Missouri ACTE Opening General Session I**

Oasis Hotel & Convention, Paradise Ballroom

Welcome; President-Elect Speeches; Keynote: Morris Morrison

- **10:00 a.m. - 11:30 a.m. Missouri ACTE Opening General Session II**

Oasis Hotel & Convention, Paradise Ballroom

Welcome; President-Elect Speeches; Keynote: Morris Morrison (MVATA Encouraged to attend)

- **11:30 a.m. – 1:30 p.m. Dine-Around Town**

- **1:00p.m. – 3:00p.m. Missouri ACTE Board of Directors Training**

Oasis TBA

- **1:30 p.m. – 4:00 p.m. MoACTE Special Workshops**

- **4:30p.m. – 6:00p.m. Missouri ACTE Awards & New Professionals Reception**

The Barley House at Moon Town Crossing

- **4:30p.m. – 6:00p.m. Missouri ACTE Awards & New Professionals Reception**

The Barley House at Moon Town Crossing

MVATA

- **8:00 a.m. – 12:00 p.m. Agriculture Mechanics CDE Skill Area Development Meeting**

Robberson Room, Holiday Inn Express & Suites, 3050 North Kentwood Ave, Springfield, MO 65803

Location: Hillcrest High School, 3319 N Grant Ave, Springfield 65803

- **1:30 p.m. – 2:00 p.m. MVATA Membership Committee**

Atrium

- **2:00 p.m. – 5:00 p.m. First General Session – Agricultural Education**

- Auditorium

(NO FOOD OR DRINK ALLOWED IN AUDITORIUM) Professional Dress Requested

MVATA Meeting: *Angel Roller, MVATA President, Seneca*

Invocation: *Josh Bondy, MVATA President Elect, Paris*

Financial Report & Presentation of Budget: *Pam Proffitt-Rowland, MVATA Treasurer*

Presentation of Ag Teacher's Creed to New Teachers: *Travis Kramme, MVATA Secretary, Sullivan*

Teacher of Teacher Awards: *Angel Roller, MVATA President, Seneca*

30 Minute Awards: *Angel Roller, MVATA President, Seneca*

Teacher Education Update:

College of the Ozarks

University of Missouri

Northwest Missouri State University

University of Central Missouri Warrensburg

Missouri State University

MACTA Representative

Southeast Missouri State University

National FFA Report – *Nina Crutchfield, National FFA LPS Specialist*

Director's Report: *Keith Dietzschold, Director - Agricultural Education, DESE*

Other Business:

Break – *Student Center - Sponsored by the College of Agriculture, Food, and Natural Resources, University of Missouri*

District Meetings:

Northeast – Cafeteria

South Central – Choir Room

Northwest – Library

Southwest – Auditorium

Central – Science Wing

Southeast – Student Center

- **4:30p.m. – 6:00p.m. Missouri ACTE Awards & New Professionals Reception**

The Barley House at Moon Town Crossing

- **5:30 p.m. – 6:30 p.m. Newly Elected Executive Committee**

Library

- **6:00 p.m. – 8:00 p.m. University of Missouri – Ag Education Sponsored Social**

Springfield Brewing Co., 301 S. Market, Springfield

- **7:30 p.m. – 10:00 p.m. All MVATA Committees – As Needed**

(All Committee Chairpersons should contact members)

Wednesday, July 27

Professional Development

Location: Hillcrest High School, 3319 N Grant Ave, Springfield 65803

- **7:30 a.m. – 8:00 a.m. Coffee Break**

Student Center

Sponsored by Missouri State University

- **7:30 a.m. – 8:00 a.m. Teacher Directory Photo Retakes**

Student Center

- **8:00 a.m. – 11:00 a.m. Missouri ACTE Late Registration**

Oasis Conference Center, Glass Lobby

- **8:00 a.m. – 8:15 a.m. Introduction of Industry Panel**

Angel Roller, MVATA President, Seneca

- **8:15 a.m. – 9:15 a.m. Industry Panel: Preparing the Workforce of Tomorrow Today**

- **9:15 a.m. Workshop Announcements**

Colleen Abbott, State PD Specialist

- **9:25 a.m. – 11:50 a.m. - Carousel Workshops** (Pick 3 to attend & Times Vary – see handout)

Session 1 - 9:30 a.m. to 10:10 a.m.

Session 2 - 10:15 a.m. to 11:00 a.m.

Session 3 - 11:05 a.m. to 11:50 a.m.

- **9:25 a.m. – 11:50 a.m. Post-Secondary Education Institutions Planning Mtg.**

Library

- **12:00 p.m. – 2:00 p.m. MVATA Awards Luncheon & Awards Presentations**

Cafeteria/Auditorium - (Professional Dress Requested)

- **2:00 p.m. – 2:15 p.m. Break**

Student Center - Sponsored by Northwest State University

- **2:00 p.m. - Pictures of Award Recipients**

Student Center

- **2:00 p.m. – 4:30 p.m. Post-Secondary Education Institutions Mtg.**

Library

- **2:15 p.m. – 4:30 p.m. Mini-Techs**

Various Locations

- **3:30 p.m. Missouri ACTE House of Delegates Mtg.**

Oasis Conference Center, Fiji Ballroom

- **4:30 p.m. – 6:00 p.m. Teacher Welfare & Service Awards Committee Meeting**

Shrine Mosque

- **6:00 p.m. – 8:00 p.m. Agricultural Education Division Social**

Shrine Mosque

All MVATA members and their families are welcome to attend this social

Sponsored by State Technical College of Missouri & Seitz Fundraising

Thursday, July 28

Professional Development

Location: Hillcrest High School, 3319 N Grant Ave, Springfield 65803

- **8:00 a.m. Coffee & Donuts**

Student Center

Sponsored by Four Seasons Fundraising

- **8:30 a.m. – 10:30 a.m. Second General Session - Agricultural Education**

Auditorium - Professional Dress Requested

Chairperson: Angel Roller, MVATA President, Seneca

Ag Ed Needs Assessment Report: Colleen Abbott, PDS

Committee Reports

Keynote Speaker: Aaron Alejandro, Texas FFA Foundation

Other Business

Announcements

- **10:30 a.m. – 12:00 p.m. STAR Team Meeting**

Library

- **12:00 p.m. Missouri ACTE Board of Directors Meeting**

Oasis Conference Center, Coco Ballroom

2022 Conference Exhibitors

Grizzly Industrial Inc

Booth C42 & C43

Wood working and metal machines

Missouri Hospital Association

Booth A14

Missouri Health Career Material

Seitz Fundraising

Booths A1, A2, & A3

Fundraising products

**IES/Advanced Technologies
Consultants**

Booth A15

UR/Automation training programs

Think First Missouri

Booth B23

Brochures, Business Cards, Pop Up
Banners, Promotional Items

4 Seasons Fundraising

Booths A7 & A8

Fundraising products

**University of Central
Missouri**

Booths B21 & B22

UCMO Swag and program
information

State Tech

Booth B18

College programs

DEPCO Enterprises, LLC

Booth B29

Classroom technology, software,
and curriculum solutions for
Careers and STEM Education

Missouri Welding Institute

Booth A13

Welding School Information

G-W Publisher

Booth C36

Textbooks, Digital, Teacher
Resources

Christian Kropf Fundraising

Booth C35

Jams, salsa, sauces, meat sticks
and information on fruit
fundraising

Your Fundraising Friends

Booth A11

Butter Braid Pastry/Wooden
Spoon Cookies

Naviance by PowerSchool

Booth D46

Digital Products

**Missouri State University College
of Business**

Booth B28

MSU Swag and program information

Visible Body

Booth C34

Anatomy Software

Nepris

Booth B20

Virtual Career Pathways

Lochirco Fundraising

Booth A6

Food (meat, cheese, trail mix,
chocolate etc.)

Fresh Country

Booth A9

Fundraising products

**Southern Regional Education
Board (SREB)**

Booth B24

Brochures and pamphlets

AGC of Missouri - Build My Future

Booth C33

Build my future information

Columbia College

Booth A10

College options

MyScholar LLC

Booth B27

ScholarPath Platform - 12th grade transition/workforce develop

Certiport, a Person VUE business

Booth B17

Industry certifications

MajorClarity

Booth B16

Promote active student engagement and exploration

Springfield Contractors Association

Booth C38

Promote the construction industry

Pitsco Education

Booth C37

Drones, Robots, Expedition Solutions

Missouri Retired Teachers Association

Booth B19

MRTA Information

VEX Robotics

Booths C31 & C32

STEM, Robotics, Coding, Engineering, Workforce development

Cutting Edge Curriculum Inc

Booth B25

Monitor, brochures, flyers, swag

Aidex

Booths C40 & C41

CTE Training Equipment

Missouri Pathways

Booth A12

Collabrative statewide initiative that supports the DESE Show Me Success Program Goal

Ozark Delight Candy Co.

Booth B26

Fundraising lollipops

Iron Eagle Welding Academy, LLC

Booth A5

Welding School Information

ICEV

Booth A4

Online material, instructional materials and industry certifications

Variquest

Booth C32

Variquest visual & kinesthetic learning suite

Ozarks Fundraising/World's Finest Chocolate

Booth C44

Fundraising products such as cookie dough, socks, chocolate

Learning Blade

Booth C39

Banner, collateral pens, rulers, signs

Red Wheel

Booth D45

Fundraising products

SES Robotics

Booth D48

STEM education equipment, supplies and curriculum

Navy Talent Acquisition Group Mid-America

Booth D47

Navy awareness

Little Ol Cookie House

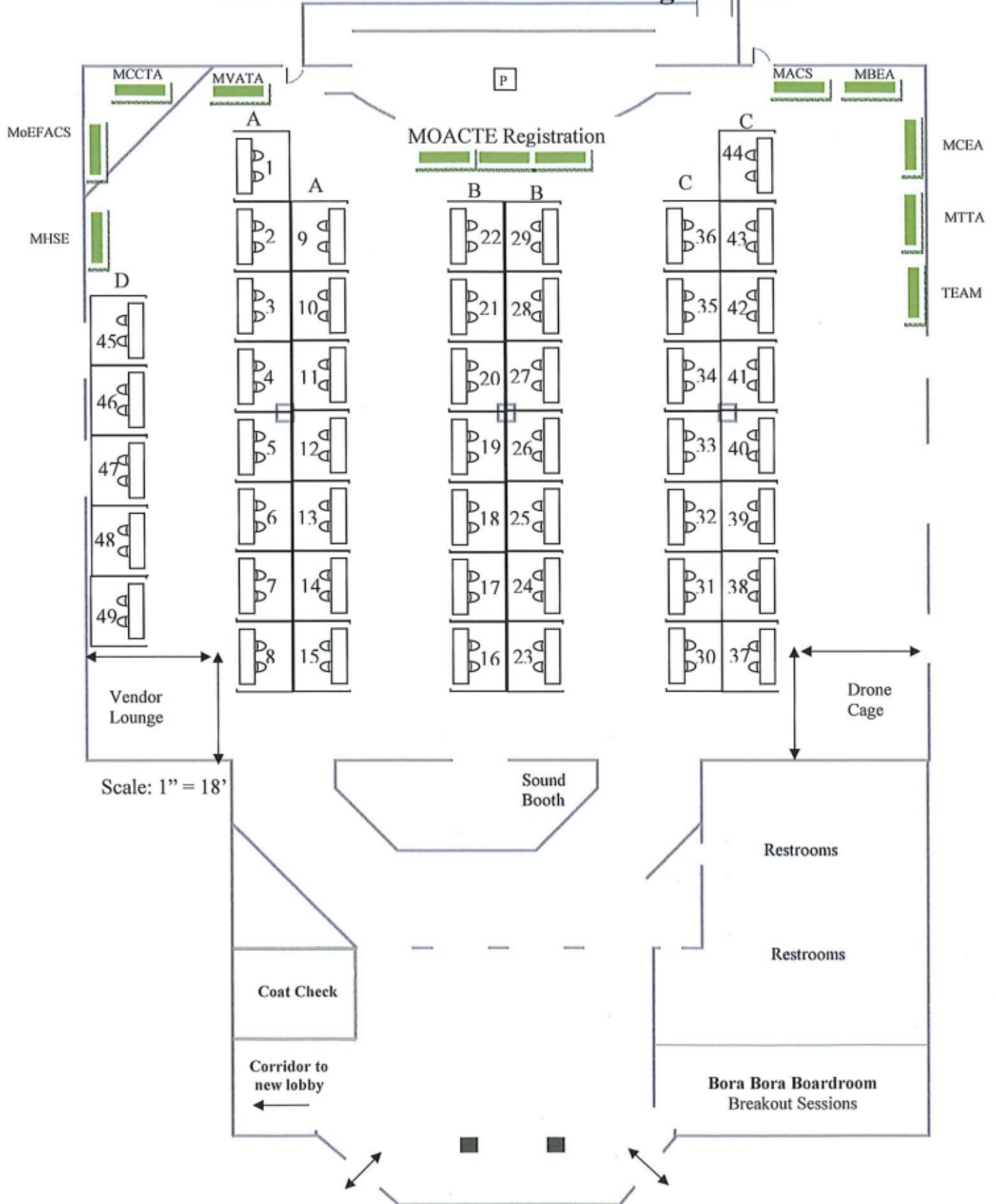
Booth D49

Cookie dough fundraising

GRAND BALLROOM

47 - 8' x 10' Booths for Vendors

Plus 9 Divisions & MOACTE Registration





2022 Missouri ACCTE Summer Conference July 25-28, 2022

MoACTE Conference Location

2. Oasis Hotel & Convention Center – 2546 N. Glenstone Ave.

Accommodations

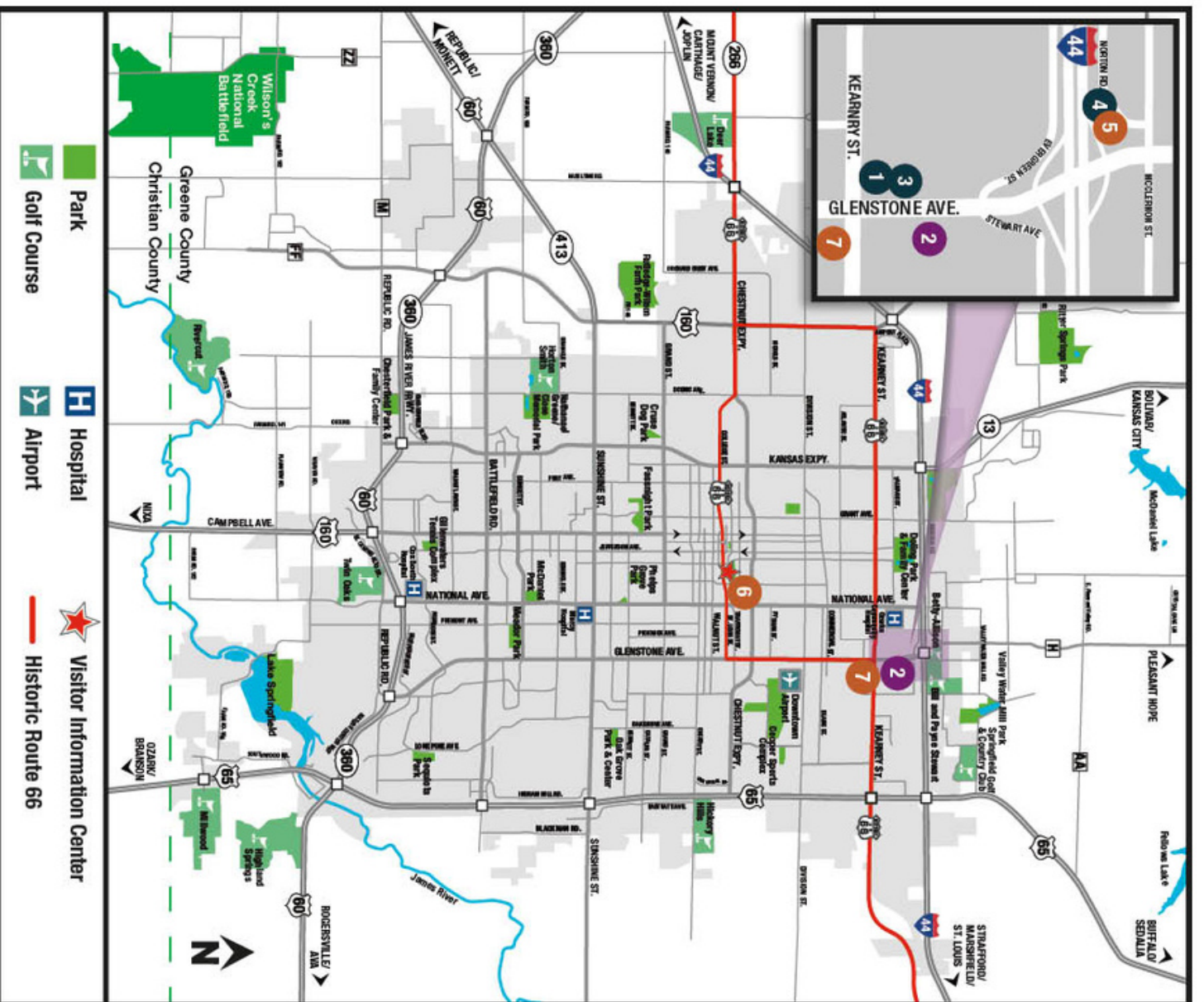
1. Doubletree Hotel by Hilton Springfield – 2431 N. Glenstone Ave.
2. Oasis Hotel & Convention Center – 2546 N. Glenstone Ave.
3. Fairfield Inn – 2455 N. Glenstone Ave.
4. Holiday Inn Express & Suites – 3050 N. Kentwood Ave.

Off-Site Locations and Attractions

5. Barley House at Moontown Crossing – 3060 N. Kentwood Ave.
6. Hammone Field-Springfield Cardinals Baseball – 955 E. Trafficway St.
7. Big Shots Golf – 1930 E. Kearney St.



For maps, attractions, shopping,
dining, coupons, current events,
and more, visit our website at
SPRINGFIELDMO.ORG



Missouri ACTE *Divisions*

Career Services (MACS)

Business Education (MBEA)

Administration/MCCTA

Marketing & Cooperative (MCEA)

Health Sciences (MHSE)

Family and Consumer Sciences
(MoEFCS)

Trade and Technical (MTTA)

Agriculture (MVATA)

Technology Education Association
of Missouri (TEAM)