

“Put Career Back in College and Career Readiness”

46th
Joint Summer
Career and Tech
Ed Workshops
and Missouri
ACTE Conference

Come Join us
in Springfield,
Missouri, July
20-23, 2015



Prepare for

A CAREER ➤

Not Just a Job



**STATE
TECHNICAL
COLLEGE**
OF MISSOURI

**TOP 10
FOR BEST**

Community Colleges
in the US

6 OF 900
BANKRATE.COM

800.743.8324



www.statetechmo.edu

TABLE OF CONTENTS

Pg Item

- 1 President's Welcome
- 1 "From our Cover Artist"
- 3 Missouri ACTE General Program
- 4 Our Opening Session Speaker
- 5 "Show-Me Marvel" Special Sessions
- 5 General Attendee Information
- 6 Dine-Around Town Participating Restaurants
- 7 Special Tuesday Afternoon Sessions
- 8 MoACTE PAC 5K Walk/Run
- 9 House of Delegates
- 10 President-Elect Candidates -
Karen Mason
Kathy Nash
- 11 Teacher of the Year - Cheryl Landers
- 12 Outstanding New CTE Teacher of the Year - Kathryn Laurentius
- 13 Special Awards -
Outstanding Service - Mike Pantleo
Recognition - Sherry Struckhoff
Recognition - Wally Gray
Recognition - Scott Gardner
- 14 Legislative Recognition Award
Senator Gary Romine
- 14 New Region III Representative -
Jayla Smith
- 16 Exhibitors

Division Agendas -

Posted Individually

MCCTA - Administrators
 MVATA - Agriculture
 MBEA - Business
 MACS - Career Services
 MSCA - Counselors
 MoEFACS - Family & Consumer Sciences
 MHSE - Health Sciences
 MCEA - Marketing
 TEAM - Technology
 MTTA - Trade & Technical



Welcome



*Gina McLachlan
President 2014-15*

Greetings from a teacher on summer break! Isn't that one of the best parts about being a teacher? Well, we may get a break from students but I know most of us use this time to relax, rejuvenate, rest ... and do all the things we want to get done that we can't do during the school year because we're so busy. I am spending the day at school, working to do some course work, curriculum work, and get ready for the National FBLA Conference. Teachers really do NOT get the summer off!

This is my last letter you to as President, as I will pass the gavel to our President Elect at Summer Conference. I have truly enjoyed this position and working with each

Division to try to make our organization and Conference better than before. Many people have supported me and I want to thank the Executive Board and our Executive Director. She truly makes my job easy!

As you enjoy our summer, I hope your plans include a trip to Springfield at the end of July to attend Summer Conference. I have attended this Conference for over 15 years and do not know how I would get my mind in gear for the new school year without attending this networking and learning event. I get so many ideas from the workshops and teachers across the state that the small price it costs to attend is well worth it. This year, we are doing things a bit differently and I hope that it is beneficial to everyone. Although I will only have a minor role in organizing next year's Conference, I still appreciate any feedback you can give me to help make next year's even better.

Enjoy your summer! Make the rain go away! And I'll see you in Springfield soon!

From Our Cover Artist



"The number one benefit of information technology is that it empowers people to do what they want to do. It lets people be creative. It lets people be productive. It lets people learn things they didn't think they could learn before, and so in a sense it is all about potential." Steve Ballmer. This is one of my favorite quotes because it is so very true. You have thousands of possibilities when it comes to technology.

My name is Amber Roberson and I am a senior in high school at Clinton, Missouri and I attend the Clinton Technical School. This summer I plan to go to college and further my education with a minor in web design. I began working with computers my freshman year of high school when I took computer applications 1 and in that class I became proficient in Microsoft Word, Excel, and PowerPoint. I didn't stop at computer applications; I went on to desktop publishing where I became proficient in Photoshop. After having an interest in desktop publishing, I joined multimedia and there I have learned so much about technology.

Taking these classes has readied me for college and possibly a great career!

2015 Fall Online & Hybrid Courses

Methods of Tchg Business & Marketing Education

BTE 4210 crn 10895 3 Cr Hrs Hybrid*

Educational Evaluation & Strategies

CTE 4974 crn 14005 2 Cr Hrs Online

Implementing Business & Marketing Education

CTE 4280 crn 12228 3 Cr Hrs Hybrid*

Managing Classroom Technologies

CTE 4501 crn 11609 2 Cr Hrs Hybrid*

Methods of Tchg Business & Marketing Education

BTE 4210 crn 10895 3 Cr Hrs Hybrid*

Curriculum Construction in CTE

CTE 4145 crn 10896 3 Cr Hrs Hybrid*

Vocational Guidance

CTE 4150 crn 11287 3 Cr Hrs Online

Methods of Teaching CTE

CTE 4160 crn 11029 3 Cr Hrs Hybrid*

Performance Assessment in CTE

CTE 4165 crn 11927 3 Cr Hrs Online

Adult Education & Training

CTE 4180 crn 12433 3 Cr Hrs Online

*Hybrid courses are predominately online, with 1-3 in-person meetings throughout the semester



UNIVERSITY OF
CENTRAL
MISSOURI

LEARNING TO A GREATER DEGREE

Enrollment Open Now

Fall Semester runs

Aug 17—Dec 11

**Conference Course Credit
Available at the UCM Booth**

For a complete listing of faculty and course offerings, please visit www.ucmo.edu/cte

For more information or enrollment assistance, please contact:

Rachel Clements (660) 543-4452

clements@ucmo.edu

Katie Harris (660) 543-4984

kharris@ucmo.edu

Graduate School (660) 543-4621

gradinfo@ucmo.edu



Missouri ACTE 2015

General Conference Program

Put Career Back in College & Career Readiness

Monday, July 20

9:30 a.m.

Missouri ACTE Board of Directors Meeting

University Plaza - Illinois Room

1:00 p.m. - 6:00 p.m.

Missouri ACTE Conference Registration

EXPO Center - Hall A & B - 635 St. Louis Street

1:00 p.m. - 6:00 p.m.

Exhibits Open

EXPO Center - Hall A & B - 635 St. Louis Street

Tuesday, July 21

7:30 a.m.

All Missouri ACTE Committee Meetings

University Plaza Convention Center - Arizona Room

8:00 a.m. - 2:00 p.m.

Exhibits Open

EXPO Center - Hall A & B - 635 St. Louis Street

8:00 a.m. - 5:00 p.m.

Missouri ACTE Conference Registration

EXPO Center - Hall A & B - 635 St. Louis Street

8:45 a.m.

New Professional Reception

University Plaza Convention Center - Arizona/Georgia/Iowa

10:00 a.m.

Opening General Session

EXPO Center - Hall C - 635 St. Louis Street

Welcome; Awards; President-Elect Speeches;

Speaker: Adam Sáenz – “The Power of a Teacher”

Tuesday, July 21 (Cont.)

11:30 a.m. - 1:30 p.m.

Dine-Around Town

Area restaurants, located within walking distance of the Expo, will be open to serve our members. Many of the restaurants will be extending discounts and a few are opening only for our members, so they will require reservations. To see a list of the restaurants participating in the Missouri ACTE Dine-Around Town, go to page 6.

TUESDAY AFTERNOON SESSIONS (See page 7 for course descriptions.)

1:30 p.m.

Adams Sáenz - Wellness of a Teacher

Expo Center - Hall C - 635 St. Louis Street

1:30 p.m.

Web 2.0 Sites

Expo Center - Hall 1 - 635 St. Louis Street

2:15 p.m.

Chamber of Commerce - What Employers Are Looking For

Expo Center - Hall C - 635 St. Louis Street

2:15 p.m.

Useful Apps for Education

Expo Center - Hall 1 - 635 St. Louis Street

3:00 p.m.

Adam Sáenz – Stress Management & Community Building

Expo Center - Hall C - 635 St. Louis Street

3:00 p.m.

Dennis Harden on CTE Rubric

Expo Center - Hall 1 - 635 St. Louis Street

Continued on next page

Tuesday, July 21 (Cont.)

6:00 p.m.

Convoy of Hope

Convoy of Hope is a faith-based, international, humanitarian-relief organization strategically based in Springfield. This will be your opportunity to volunteer for a one-hour time period from 6:00 p.m.-7:00 p.m. or from 7:30 p.m.-8:30 p.m., where you will be assisting with sorting, packing, counting, labeling items and various other projects that will be distributed through its program initiatives.

Volunteer time for attendees - for more information, go to:

http://www.mo-acte.org/conferences/2015/convoy_of_hope-flyer.pdf.

To register, go to:

http://www.mo-acte.org/conferences/2015/convoy_of_hope-release_form.pdf.

Wednesday, July 22

8:00 a.m. - 11:00 a.m.

Missouri ACTE Late Registration

University Plaza Hotel Lobby

3:30 p.m.

House of Delegates Meeting

University Plaza Hotel - Illinois Room

6:00 p.m.

Missouri ACTE 5K Run/Walk for the PAC

Jordan Valley Park; Springfield, MO

Race starts at 7:00 p.m.

All proceeds will support Missouri Association for Career and Technical Education Political Action Committee to promote the development of career & technical education within the state of Missouri.

To view the route, go to:

<http://www.usatf.org/routes/view.asp?rID=534737>

Registration must be received by July 1st to guarantee t-shirt & size!

Pre-Register Online:

<https://runsignup.com/Race/MO/Springfield/1STANNUALMoACTEWALKRUN>

Thursday, July 23

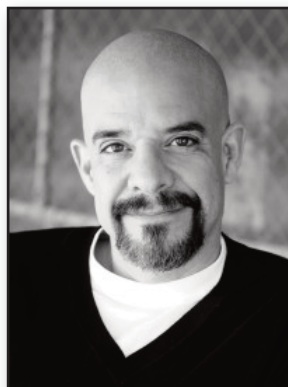
12:00 p.m.

Missouri ACTE Board of Directors Meeting

University Plaza - Illinois Room

Lunch served at 11:30 a.m.

Our Opening Session Speaker



Dr. Adam Sáenz

How did he go from juvenile detention to two doctorates, with training at Harvard Medical School and University of Oxford? Adam will tell you: it was the power of a teacher.

Adam Sáenz will be the first to admit that his journey through life so far has been an amazing

one, filled with tremendous highs and profound lows. At every important juncture there have been two common elements, lifesavers that appeared when he really needed it: education and teachers. Along the way, this son of blue collar parents has gained two doctorate degrees, with training at Harvard Medical School and Oxford University.

Adam is not your ordinary school psychologist. His personal story will inspire you; his professional workshops will empower you.

We are fortunate enough to have Adam as our keynote speaker on Tuesday morning, as well as the presenter for two of our General Sessions that afternoon. Adam will present "The Power of a Teacher" at the 10:00 a.m. Opening Session; "Wellness of a Teacher" at 1:30 p.m., and "Stress Management & Community Building" at 3:00 p.m.

You won't want to miss this opportunity! As Chris White, Ph.D., Director of Research at the Flippen Group says, "Dr. Sáenz has a refreshing - even uncanny - ability to merge science with practice ... if you're looking for a tool to get you teaching from your sweet spot, you just found it."

Coffee & Donuts!



There will be complimentary coffee and Krispy Kreme donuts available at the Expo Center Tuesday morning July 21, 2015. Sponsored by the Springfield Convention and Visitors Bureau. Come and enjoy!



"Show-Me Marvel" Special Sessions

Tuesday, July 21

8:30 a.m. - 9:15 a.m. ♦ *Expo Center*
Choose one to attend.

CEV - "Network for Educator Effectiveness" University of Missouri Web-Based Teacher Evaluation System

Learn about the process, components of the evaluation and get answers to your questions.

Presenter: Mark Johnson, VP of Business Development

"MERIC"

A demonstration on use the MERIC website for career planning and/or locating a job.

Presenter: Glen Mieir, MO Department of Economic Development

Planning for Retirement - The Public School Retirement System of Missouri

A PSRS/PEERS representative will be available to answer any questions you may have about retirement as well as provide you with resources to help you better prepare for retirement.

Presenter: Stacie Verslues, Member Education Coordinator

Tuesday, July 21 - 6:00p.m.

MoACTE Hands of Hope Volunteer Project

Tuesday Evening, July 21



volunteer@convoyofhope.org

General Attendee Information

Registration

All persons who attend the Conference must be registered. You must wear your name badge at all times for admittance into meetings and the exhibit area.

General Session

We are pleased to welcome Adam Sáenz as our Opening Session speaker. You won't want to miss a word of Mr. Sáenz's inspirational talk on Tuesday at 10:00 a.m. in Hall C of the Springfield EXPO Center. (635 St. Louis Street) In addition, Mr. Sáenz will be presenting two sessions, "Wellness of a Teacher" (1:30 p.m.) and "Stress Management & Community Building" (3:00 p.m.) on Tuesday afternoon, also in Hall C at the Springfield Expo Center.

Exhibits

Exhibits will be open to attendees between the hours of 1:00 p.m. and 6:00 p.m. on Monday and 8:00 a.m. to 2:00 p.m. on Tuesday. You are encouraged to tour the exhibits at the Springfield EXPO Center. Many new products, services and supplies will be on display with representatives on hand to answer your questions.



1st Annual MoACTE PAC 5K Walk/Run

Come join us to walk ... or run
... or watch!

6:00 p.m. Onsite Registration

7:00 p.m. 5K Race Begins
Walk begins after

8:30 p.m. Post-Race Awards

Missouri ACTE “Dine-Around Town”

Tuesday, July 21 (11:30 a.m. - 1:30 p.m.)

Gilardi's Ristorante and the Tower Club will open their doors as a private event for MoACTE attendees on Tuesday, July 21 from 11:30am – 1:30pm. Both venues are located within one block of the Expo and will have available a limited menu designed to get you in and out quickly, so that you won't miss a moment of the afternoon session. **Advanced reservations are required by Monday, July 13th.** The Tower Club (located on the 22nd floor of Hammons Towers) will offer a lunch buffet for \$10.95 per person. Gilardi's will have a limited engagement menu in the \$10 price range.

Restaurants available within one mile of the Springfield Expo:

1. **Aviary Café & Creperie Downtown** – 400 E. Walnut Street, (417) 866-6378, <http://www.aviarycafe.com> / .04 Miles from Expo
2. **Big Whiskey's Downtown** – 311 Park Central East, (417) 862-2449, <http://www.bigwhiskeys.com/locations.htm> 0.3 miles from Expo Center, 6 minute walk
3. **Blue Bull Bar & Grill** – 105 Park Central Square, (417) 831-2855, <http://bluebullbarandgrill.com/> .04 Miles from Expo
4. **Chipotle** – 1211 E. St. Louis Street, (417) 831-2159 / 0.5 miles from Expo Center, 11 minute walk
5. **Dublin's Pass Irish Pub & Restaurant** – 317 Park Central East, (417) 862-7625, <http://dublinspass.com> / 0.3 miles from Expo Center, 6 minute walk
6. **Dug Out Bar & Grill** – 1218 E. Trafficway, (417) 866-2255 / 0.6 miles from Expo Center, 12 minute walk
7. **Ebbets Field**, (Burgers, Pizza, Sandwiches)– 1027 E. Walnut, (417) 865-5050, www.urbanspoon.com, 0.5 miles from Expo Center, 10 minute walk
8. **Falstaff's Local** – 311 park Central West, (417) 720-4646, www.FalstaffsLocal.com
9. **Gailey's Breakfast Cafe** – 220 E. Walnut Street, (417) 866-5500, www.urbanspoon.com / .05 Miles from Expo
10. **Gilardi's (Italian)** – 820 E. Walnut Street, (417) 862-6400, <http://gilardisonwalnut.com/> **Advance reservations required by Monday, July 13th**
11. **Harbell's Grill & Sports Bar** – 315 Park Central West, (417) 862-0477, www.harbellssgf.com, 0.5 miles from Expo Center, 10 minute walk
12. **Izumi Hatake Steakhouse & Sushi Bar** – 302 E. Walnut Street, (417) 865-0366 / www.urbanspoon.com / .04 Miles from Expo
13. **Jimmy John's Gourmet Sandwiches** – 322 E. Walnut Street, (417) 832-0500, www.JimmyJohns.com / .04 Miles from Expo
14. **Kai (Asian, Sushi, Vegetarian)** – 306 S. Campbell Ave, (417) 832-0077 / www.urbanspoon.com / .06 Miles from Expo
15. **Maria's Mexican Restaurant**, 406 South Ave (417) 831-9339, www.mariasdowntown.com, 0.5 miles from Expo Center, 10 minute walk
16. **Mudhouse (Soups, Salads & Sandwiches)** – 323 South Ave, (417) 832-1720 / <http://www.mudhousecoffee.com> / .05 Miles from Expo
17. **Nonna's Italian American Café** – 306 South Ave, (417) 831-1222, www.nonnascafe.com / .04 Miles from Expo
18. **Panera Bread Company**– 500 S. National Ave, (417) 862-9898, .09 Miles from Expo
19. **PaPpo's Pizza** – 221 E. Walnut Street, (417) 866-1111, .05 Miles from Expo
20. **Qdoba Mexican Grill** – 401 S. Kimbrough Ave, (417) 866-1388 / www.qdoba.com / .02 Miles from Expo
21. **Springfield Brewery Company**, (Burgers, Pizza, Salads, Sandwiches) – 305 S. Market Ave, (417) 832-8277, <http://www.springfieldbrewingco.com/> .06 Miles from Expo / 10% Discount Available – **Parties of 15 or more, please call to make advance reservations.**
22. **SPRINGFIELD EXPO** – E. St. Louis Street
23. **St. Michaels Sports Bar & Grill** – 301 South Avenue, (417) 965-2315, www.urbanspoon.com / .04 Miles from Expo
24. **Steak N' Shake** – 1158 E. St. Louis Street, (417) 866-6109, .05 Miles from Expo
25. **Taylor's Old Fashion Steakhburgers**, 139 Memorial Plaza, (417) 862-3278 , .02 Miles from Expo
26. **Terrace Grill (Inside University Plaza Hotel)** – Salad Buffet with soup & 1 hot item – 333 S. John Q Hammons Parkway, (417) 864-7333, ext. 7150 / **Reservations Encouraged**
27. **Tower Club** – 901 E. St. Louis Street, (417) 866-4466, <http://towerclubspringfield.com/> .02 Miles from Expo. Lunch buffet - \$10.95 – **Advance reservations required by Monday, July 13th.**

NEW!

Special Tuesday Afternoon Sessions

Tuesday, July 22, 2015*EXPO Center***1:30 p.m.****Adam Sáenz on the Wellness of a Teacher***Expo Center - Hall C*

Are you too busy to prepare to fully engage your students academically or behaviorally (let alone find time to exercise and eat right)? Are you relationally-isolated at work and carrying emotional baggage from experiences you've had on your campus or with colleagues? Are you barely able to get by financially, and, in the end, wondering why you ever decided to become a teacher or whether you want to continue in the profession. In this session, you will gain a deeper understanding of emotional, occupational, financial, spiritual and physical wellbeing.

1:30 p.m.**Matt King, CEO iAmCareerTech***Expo Center - Hall 1*

Matt King, the founder of iAmCareerTech, an online social network for Career Tech Schools. Seven months ago this campaign began in Ohio and since then we have spread across the country. Over the summer we will be shooting the first ever reality show for Career Technical Education called, "The Classroom" that will air on television. We would love to share our journey while filming this show as well as what the future of Career Technical Education looks like. (promo video)

2:15 p.m.**Local Springfield Business Panel Discussion***Expo Center - Hall C*

Area business persons will form a panel discussion regarding what human resources is currently looking for in hiring and retaining personnel, as well as what we should be teaching to prepare students for the work force.

2:15 p.m.**Web 2.0/Apps***Expo Center - Hall 1*

Learn about free Apps to use in the classroom such as Wordle, Motivator, BeFunky, Popplet, Cacao, Dropbox, and Evernote. Teachers will also learn about some Web 2.0 websites like Padlet, wheeldecide, kahoot, and time toast.

3:00 p.m.**Adam Sáenz on Stress Management***Expo Center - Hall C*

Most of us are aware of the potential negative effects of stress, including physical and mental illness an eventual burnout. In worst-case scenarios, stress erodes not only our individual well-being, but also our ability to create healthy, effective relationships with our colleagues and the students on our campuses. We'll discuss the source of stress in your vocation and explore various coping strategies based on the fight, flight or freeze response.

3:00 p.m.**Dr. Dennis Hardin, DESE on CTE Rubric***Expo Center - Hall 1*

All CTE programs are required to be evaluated on an annual basis. DESE staff will discuss the revised Common Criteria and Quality Indicators for Career Education Programs and the accompanying evaluation and program improvement tool. These resources have been made available to assist CTE educators with program evaluation and improvement of their programs.

Your Partner in Learning



Take your students to a higher level with print and digital learning resources from ATP. We publish a broad range of products that build confidence by focusing on the skills and applications necessary to succeed on the job site and in the classroom.

ATP learning materials feature:

- Effective Instructional Layout
- Field-Related Applications
- Digital Learning Tools
- E-Textbook Options



AMERICAN TECHNICAL PUBLISHERS
800-323-3471 • www.atplearning.com

MoACTE 1st Annual 5k Walk/ Run

Wednesday, July 22nd, 2015
Race Begins at 7:00 p.m.
Jordan Valley Park
Springfield, MO



Cost = \$35 per person This includes: Event T-Shirt with Glow-in-the-Dark Ink
 Shirt Sizes S-2XL, Ipico Chip System timing, & Post-Race Snack

Pre-Register Online: <https://runsignup.com/Race/MO/Springfield/1STANNUALMoACTEWALKRUN>

Pre- Register by Mail:

***Make checks payable to MoACTE PAC**

Send to: Samantha Cosper
 Cassville High School
 1501 Main Street
 Cassville, MO 65625

Awards:

Medals for the following divisions:

Overall Male, Overall Female

Ages 18 & Under, 19-29, 30-39

40-49, 50 & Up

**Registration must be received by
 July 1st to guarantee t-shirt & size!**

Schedule

6:00 p.m. Onsite Registration
 T-Shirt Pick-Up
 7:00 p.m. 5k Race Begins
 Walk begins after
 8:30 p.m. Post-Race Snack
 Awards

All proceeds will support Missouri Association for Career and Technical Education
 Political Action Committee to promote the development of career & technical education within
 the state of Missouri.

View the course at: <http://www.usatf.org/routes/view.asp?rID=534737>



Questions Contact: Samantha Cosper or Karen Mason
 (417) 342-2922 (417) 850-3566

2015 Missouri ACTE House of Delegates

MCCTA

(Administration)

Matt Duncan
Jacqueline R. Jenkins
Brandon J. Russell

MVATA

(Agriculture)

Adam Bieri
Jay Hale
Chris Henderson
Jonathan P. Hoer
Lori Lewis
James McCormack
Angel Roller
Deanna Thies
Jeff Voris

MBEA

(Business)

Roy F. Alberson
Theresa A. Bynum
Brenda Kaiser
Barbara Luna
Theresa Taylor
Ruthann Williams

MACS

(Career Services)

Erici Lark

MoEFACS

(Family & Consumer Sciences)

Samantha Cospers
Tracey Eatherton
Darci Friberg
Kathy Nash
Debra Price

MSCA

(Counselors)

Nancy Ritchey

MHSE

(Health Sciences)

Ernema T. Boettner
Dewanda Lewis-Bey

MCEA

(Marketing)

Amy Franklin
Xanthe Meyer

TEAM

(Technology)

Jaron W. McMurry
Rudy Joe Widmar

MTTA

(Trade & Technical)

D. Brandon Dennis
Regina Gossett
Dorothy Loges
Debra A. Zoglmann



Sponsored by:



A free, comprehensive online system that offers a variety of information and tools to help users develop an education and career plan.



User Support Contact:

Jackie Coleman and Marilyn Dayton
573.634.0043 | jcoleman@motrainer.com

- E-mail and telephone support
Monday-Friday, 8:00 a.m.- 4:30 p.m.
- Regional Workshops
- Webinar training
- On-site customized training
- Site Activation

Meet the Candidates

Once again, we have two outstanding candidates for Missouri ACTE President-Elect. In addition to being members of the Missouri Family and Consumer Sciences (MoEFACS) Division, these accomplished women have another thing in common -- they have invested their time and talents in their industry and are well respected by their peers. The lists below only "brush the surface" in describing the positions they have held and true leadership they have demonstrated.



Karen Mason

*FACS Instructor
East Newton R-6 School District*



Kathy Nash

*7-12 Family Consumer Science
Department Chair
Pre-Professional Educator Cadet
Coordinator
Lee's Summit School District*

- ♦ ACTE - National President
- ♦ ACTE Region III - Vice President
- ♦ ACTE FACS Division - Vice President
- ♦ ACTE Public Information Committee and Resolutions Committee - Member
- ♦ ACTE Nominating Committee - Chair
- ♦ Missouri ACTE - Policy Committee Chair
- ♦ Missouri ACTE - National Policy Seminar Delegate
- ♦ MoEFACS Board of Directors & President
- ♦ Served on multiple committees, New & Returning Teachers Workshop, Mentor, and Presenter at the Summer Conference
- ♦ MSTA - Member
- ♦ East Newton CTA - Holding office for several terms
- ♦ National FCCLA Board of Directors - Member
- ♦ Missouri Alumni and Associates FCCLA - Member
- ♦ FCCLA Representation on FCS Coalition
- ♦ FCCLA Roundtable Presenter for FCCLA Chapter Advisors
- ♦ NATFACS - Member, NATFACS Policy and Planning Committee - Serving on several committees: Chair Advocacy Committee, Financial Growth, Membership, Registration, Public Information, Scholarship, and Showcase Presenter

- ♦ Missouri Educators of Family Consumer Science Division - President
- ♦ Greater Kansas City Network for Women in Administration - Treasurer
- ♦ Missouri ACTE - Educators of Family and Consumer Sciences Division - Board Member
- ♦ Southeast Jackson County (MO) Suburban FACS Teachers Association - President
- ♦ Missouri ACTE Professional Development Committee
- ♦ Missouri ACTE Board of Directors
- ♦ ACTE Leadership Training
- ♦ MoEFACS Registration Committee Chair
- ♦ Co-Wrote Model Curriculum for Pre-Professional Cadet Educator for DESE
- ♦ DESE Leadership Academy
- ♦ LS District Reading Across Disciplines Team (RAD)
- ♦ LS Professional Development Council
- ♦ LS District PRAT Career Course Recommendation Team
- ♦ LSN Co-Chair of Site Goal - North Central Accreditation
- ♦ LSN Character Education Committee Member
- ♦ LS Middle School PRAT Team
- ♦ LSN Site-Based Team Representative

Teacher of the Year

CHERYL LANDERS



Cheryl Landers holds a Bachelor of Science in Home Economics Education from Central Missouri State University and a Master in Education in Family and Consumer Education from Iowa State University. Since 1994, she has been a Family and Consumer Sciences teacher for the Consolidated School District #4.

To summarize in one page all that Cheryl Landers has accomplished for her school district, students and community in her 20 years as a teacher in the field of Family and Consumer Sciences is, to put it simply, an impossible task. As Cheryl put it in her application "Without the contributions of those before me, I would not be the educator I am today, so it is my turn to give back." And, "give back," she has. Here are some comments from those who have benefited from Cheryl's time and talents:

From a parent ~

As parents of three who have gone through Grandview C4 schools, please know that we have a fairly extensive experience in working with teachers. Just as kids fall onto a bell curve, so do

teachers. Since our children span 10 years in age, we have gotten to know, much better than many, where most teachers fall on the curve.

Cheryl instills desire in kids to excel. She has been teaching for over 20 years, but her energy is nearly that of a new-hire. Her knowledge and expertise are witnessed by those within, and outside, the district. She continues to improve, expand, and promote the programs in her department.

From a colleague ~

I have observed Cheryl's strengths and skills from the classroom transfer to her leadership abilities as: Practical Arts Department Chair, FCCLA Sponsor and ProStart Sponsor.

Cheryl has been in charge of the ProStart program since its inception at GHS during the 2004-2005 school year. The ProStart students, under her tutelage, have been recognized for their culinary skills in area competitions and at events they have catered throughout the school district.

Cheryl consistently puts students needs in the forefront and is always willing to assist in any capacity necessary.

In each of her leadership roles, Cheryl has gained additional experience and opportunity to: act as a liaison for student, parent and staff communication; review data; and provide input on program direction, planning and supervision.

Among Cheryl's numerous strengths is her ability to manage and relate to a diverse group of people and situations. She has insight from experience to work collaboratively with a wide range of interests and skill levels. She is exceptionally professional, conscientious, solution-driven, analytical, practical and well versed in her area of content.

Cheryl Landers has the capability to lead and the willingness to accept responsibility.

From a student ~

Cheryl Landers is an outstanding teacher, mentor, and advisor. I have taken two foods classes with her and I have developed a deeper relationship with her through my time as an FCCLA member. Mrs. Landers is a hard working, dedicated teacher. She invests her time in the classroom, but is also an advisor for our local FCCLA chapter and the ProStart teacher. She spends many hours outside of the classroom working with students at various conferences, meetings, and competitions.

She deserves this award so much. Someone who is as passionate as she is when working with students deserves to be recognized for their hard work. She is one of the best teachers that I have ever had.

As you can see, Cheryl Landers is a very worthy recipient and we are proud to name her Missouri ACTE 2015 Teacher of the Year.



Outstanding New CTE Teacher of the Year

KATHRYN LAURENTIUS



Kathryn Laurentius is a Business & Marketing teacher and DECA advisor at Washington High School/Four Rivers Career Center in Washington, MO. In addition to all the activities her position requires, she is pursuing a Masters' Degree at Lindenwood University. As you can see by the comments below, Mrs. Laurentius is a great addition to the field of career and technical education and well deserving of Missouri ACTE's 2015 Outstanding New CTE Teacher of the Year!

From the Department Chair ...

As the Washington High School Business Department Chair, it has been a joy to watch Mrs. Laurentius develop as a business/marketing teacher. Mrs. Laurentius is deeply committed to business/marketing education and helps her students achieve success in the classroom, as well as in competitive events.

Mrs. Laurentius provides endless opportunities for her students to be involved in school and the local community. Some of the activities her students participate in include: Sink It

for Pink, Children's Relay for Life, food drives, tailgating/bbq for the high school football game, teacher appreciation and other charitable events. Mrs. Laurentius also prepares her students for DECA marketing competitions at the district, state and international level. Many students have participated in all levels of competition due to her guidance and dedication to the program.

In her classroom, Mrs. Laurentius uses engaging lessons and the best teaching strategies to help her students reach success. She helps in the writing of the business department curriculum and shares best practices with other teachers. Mrs. Laurentius is a professional who is dedicated to business/marketing education, demonstrates compassion for her students, is supporting of our local community, and strives to do her best every day in the classroom.

From a student ...

Mrs. Laurentius started here at Washington High School two years ago, and I can honestly say, she is one of the best teachers I have ever had. Before Mrs. Laurentius, DECA was known at our school as just the class that sold cookies between classes and not recognized for all the charity work and community service projects we do to help our community.

Now, because of Mrs. Laurentius, DECA at Washington, MO, is known for its unbelievable school store we have over at the Four Rivers Career Center, the amazing charity projects

we do to help our small town, and has given students the opportunity to learn more about marketing and becoming an entrepreneur. Having Mrs. Laurentius as our DECA advisor has improved our DECA membership considerably and has truly left her students with the confidence that they can go out into the real world and conquer any task thrown at them. She is truly an amazing woman, teacher and friend that any student would be proud to say they have.

Mrs. Laurentius has truly changed Washington High School DECA forever. She was the first advisor to have students win at DECA Internationals, helping students raise over \$1,700 for Shoot for A Cure, collecting goods for Loving Hearts and just changing the way students see DECA now. I personally can say that without Mrs. Laurentius being here I don't know if I would have stayed at this school. She made me feel like I can be a part of something and that I can be who I am and not be ashamed for myself.

Mrs. Laurentius is an amazing teacher in how she teaches you things that you can use all through your life, and a friend that if you need help or someone to talk to is always there no matter what. She is so hardworking, dedicated, outgoing, personable, relatable, and a unique woman that will forever change our DECA program. Her legacy at this school will never be forgotten



Special Awards

Outstanding Service Award Mike Pantleo

The Outstanding Service Award is given to recognize educators who have made the highest meritorious contributions to the improvement, promotion, development, and progress of career and technical education ... and Mike Pantleo, Director of the Career and Technology Center of Fort Osage, certainly fits the bill. His letters of nomination and recommendation all refer to Mike's tremendous skills as a leader and mentor, both locally and at the state level.

Mike serves as Chairman of the Greater Kansas City Area Ad Hoc Director's group and was recently nominated to serve as Vice President of the Missouri Council of Career and Technical Administrators. As one letter of recommendation put it ... "he was chosen for his knowledge, leadership qualities, and the success he has experienced at the CTC at Fort Osage. Under his leadership, teachers and students excel. "

CTE is lucky to count such a fine leader among our number.

Recognition Award Sherry Struckhoff

Sherry Struckhoff is retiring this year, but not before we get a chance to thank her for all her contributions to CTE and Missouri ACTE. She has served as President of MHSE, President of Missouri ACTE, and Missouri ACTE's Region III Representative. In addition to serving as a presenter on a variety of topics at the local, state, regional, and national levels, Sherry also continued to attend courses, so she could share what she'd learned with her students and colleagues.

One of her letters of nomination stated, "Sherry embodies what a CTE teacher should be – committed to service, full of energy, a life-long learner, and a great believer in the capabilities of students and her colleagues, as well." Another continued, "Sherry ... sets the bar high. Her empathy for her students and fellow educators is felt whenever you visit with her because she believes in education, she believes in her students, and she believes in Missouri ACTE."

Thank you, Sherry!

Recognition Award Wally Gray

Mrs. Wally Gray is the Administrator at Parkdale Manor in Maryville, MO. That title, however, doesn't begin to describe all she has done for Health Science. To list just a few of her generous contributions, she has:

- ♦ opened her facility to help students achieve the required clinical training for the CNA certification;
- ♦ converted a room for post-clinical conferences and adjusted that room's availability to meet the students' ever-changing schedule;
- ♦ provided scholarships, financial assistance, and informal mentoring services to students and her employees to promote continued education; and
- ♦ provided shelter and even transportation during inclement weather.

As her letter of nomination states, "At the heart of her kindness is the belief that everyone deserves a chance to do well if given the opportunity."

Recognition Award Scott Gardner

Scott Gardner, FCS Financial Vice President of Sales and Marketing, isn't one to rest on his laurels. Two years ago, Scott and FCS Financial recognized a need to advance agribusiness knowledge in the classroom. After working with the Agriculture Education Department at DESE and researching the needs of agriculture teachers across the state, FCS Financial, under Scott's leadership, provided a \$70,000 grant to the Missouri Vocational Agricultural Teacher's Association in order to update the Ag Management and Economics curriculum. As his letter of nomination states, "Without the support from Mr. Gardner and FCS Financial, our curriculum in this area would have remained outdated and, realistically, rarely used." Another recommendation letter adds, "Additionally, during Scott's leadership, FCS Financial started their Ag Youth Program as a part of their commitment to Young, Beginning, and Small Farmers."

The contributions of this tremendous CTE partner will be felt for generations to come.

Legislative Recognition Award

SEN. GARY ROMINE



Senator Romine has demonstrated support for career and technical education by working to raise the profile of student achievement in CTE through legislation in the 2015 legislative session. This is no surprise since his personal experience in career and technical education has impacted his career path throughout his life. Starting with being a member of DECA in high school, working in a skilled trade, to later teaching in the CTE field and pursuing a business enterprise. Senator Romine is a valued champion in the public policy arena for our cause. His advocacy with other lawmakers will no doubt strengthen the role of CTE through his leadership.

Senator Gary Romine was elected in November 2012 to serve Missouri's 3rd Senatorial District, which includes Iron, Reynolds, St. Francois, Ste. Genevieve and Washington counties and part of Jefferson County.

Senator Romine is a member of numerous committees, serving as chairman of the Joint Committee on Education; chairman of the Senate Interim Committee on Medicaid Transformation and Reform; and vice-chairman of the Committee on Education. He has received several legislative awards, including the Missouri Chamber of Commerce and Industry's 2014 Freshman of the Year Award, as well as the Missouri Community College Association's Legislative Award of Distinction (2014).

In addition to his legislative duties, Sen. Romine currently serves as President and CEO of Show-Me-Rent-To-Own, a business he founded more than 25 years ago. What began as a single store in Leadington, Mo., has grown to include nine stores throughout the state, employing many outstanding men and women from southeast Missouri. He has served as chairman of the board for the Ste. Genevieve-based MRV Banks since its opening in 2007 and was president of the Mineral Area College Board of Trustees, of which he had been a member for several years.

Senator Romine has been a member of the Association of Progressive Rental Organizations for 24 years, previously serving as president and public relations chairman. During this time, he participated in Federal Trade Commission and congressional hearings, an experience that gave him unique insight into navigating the federal legislative process.

He also has served as legislative liaison for the Missouri Rental Dealers Association and as a member of the Government Relations Committee for the Missouri Bankers Association.

After graduating from Poplar Bluff High School, Sen. Romine received his associate degree from Three Rivers Community College and his bachelor's degree from Central Missouri State University in 1978. He taught high school in the Branson and Farmington school districts prior to starting his own business.

Senator Romine and his wife, Kathy, raised five children in the southeast Missouri area. They currently reside in Farmington, where they enjoy spending time with their 11 grandchildren and are active members of their church and community.

New Region III Representative

Jayla Smith has been named the new Missouri ACTE Region III Representative. Jayla will have some big shoes to fill with Sherry Struckhoff's retirement but, as Sherry says, "Jayla is the perfect person for this job."

The authors of Jayla's many letters of support all agreed. One said, "Jayla is thoughtful in her decisions and articulate. She searches for resources to help in making decisions affecting co-workers and our industry. She is a well-respected member of her local community, her state and her profession." Another stated, "Mrs. Smith will provide your group with a viewpoint steeped in experience and common sense."

We look forward to all that Jayla will bring to her new position.

*Look for NCCER at the
2015 Missouri ACTE Summer Conference.*



81% of dropouts said that more real-world learning may have influenced them to stay in school.*

Students deserve every opportunity to start on a successful career path. With hands-on training, students are prepared for high-wage, in-demand careers as construction craft professionals.

NCCER's standardized curricula lead to industry-recognized credentials. Call today and find out how your school can lead students to rewarding careers in the construction industry.

Credentials Matter.

*Source: Association for Career and Technical Education



Find out how ABC Heart of America and NCCER can help you certify and credential your students by contacting Sara Flaherty-Lee at 816.994.5990 or sara@abcksmo.org.

2015 MISSOURI ACTE SUMMER CONFERENCE EXHIBITORS

Booth Number & Company

B11 – Missouri Division of Workforce Development

Susan Thomas
Ph: (573) 526-8254
Informational Brochures

B12 – Missouri Beef Industry Council

Taylor Tuttle
Ph: (573) 817-0899
Nutritional and Class Information

B21-11 – Goodheart-Willcox Publisher

Don Blazek and Ellen Curran
Ph: (888) 438-6108
Textbooks, Teacher Materials, Instructor Materials

B25 – TJ's Pizza & Fundraising Company

Bruce Bacott
Ph: (314) 869-9404
Food Products for Fundraising

B26 – Missouri Connections

Jackie Coleman
Ph: (573) 230-5725
Missouri Connections Website and Related Handouts

B28 – Hummert International

Andrea Shepherd
Ph: (314) 506-4500
Horticulture Products

B30 – Frickenschmidt Foods

Dennis Cornish
Ph: (417) 232-4430
Meat Snack Sticks - Fundraising

C31-32 – Career & Technology Education/UCM

Rachel Clements
Ph: (660) 543-8387
CTE Information for Undergraduate and Graduate Degrees, Course Credit for Conference

Booth Number & Company

C34 – Ranken Technical College

Sandy Kremers
Ph: (314) 286-4809
College Information / Materials

C36 – Animal Care Technologies

Trisha Cope
Ph: (800) 357-3182
Multi-Media Online Teaching Resource for Animal Science Classes

C38 – Ozarks Technical Community College

Vicki MacDonald
Ph: (417) 447-6921
Ozarks Technical Community College Educational Materials

C39-40 – DEPCO, LLC

Aaron Panek
Ph: (620) 231-0019
Technology Education Curriculum, Software, and Equipment Solutions

C41-42 – National Geographic Learning/Cengage Learning

Barbara Postal
Ph: (314) 568-9196
Textbook Resources

C43 – 4 Seasons Fund Raising

Derek Wharton
Ph: (515) 981-5118
Fund Raising Food Products

C44 – Federal Reserve Bank of Kansas City

Gigi Wolf
Ph: (816) 881-2736
Free Educational Resources

C45 – Federal Reserve Bank of St. Louis

Barbara Flowers
Ph: (314) 444-8421
Free Economic Education Materials

Booth Number & Company

C46 – Missouri Department of Higher Education

Marilyn Landrum
Ph: (573) 522-6285
Financial Literacy Publications

C47 – State Technical College of Missouri

Kathy Scheulen
Ph: (800) 897-5196
Information on Programs at STC

C48-50 – L C Fundraising Inc.

Lloyd Camp and Lana Camp
Ph: (573) 378-6506
Fundraising Candy, Cookies & Meat

D51-52 – Kansas City Audio Visual

Dave Hersh
Ph: (816) 333-5300
Audio-Visual and Education Technologies

D53 – State Fair Community College

Renee Cella
Ph: (660) 530-5833
College Information

D54 – GBC Customized Calendars (Gordon Bernard)

Bruce Linafelter
Ph: (513) 248-7600
Calendars for Fundraising

D55 – Missouri Project Lead the Way

Ben Yates
Ph: (660) 864-6813
Informational Materials about Project Lead the Way

D58 – CEV Multimedia

Mark Johnson
Ph: (806) 748-8728
CTE Curriculum

Booth Number & Company

D59 – Innovative Education Systems

Chris Reuter
Ph: (866) 636-5603
Stem Solutions Equipment and Curriculum

D60 – International Greenhouse Company

Chris Kirschner
Ph: (888) 281-9337
Greenhouse Structures, Greenhouses, Construction and Greenhouse Supplies

D60 – City of Springfield BioSolid Progress

Karyn Highfill
Ph: (417) 891-1600
Agricultural Biosolids Progress and Facility Careers

D61 – MU College of Education

Tony Barbis
Ph: (573) 882-9705
College Education Programs

D62 – Aidex Corporation

Suzanne Doyle
Ph: (785) 766-6670
Industrial Education Training Systems

D63 – Armstrong Medical Industries Inc.

Sue Dillon
Ph: (800) 323-4220
Actar, Laerdal, Simulaids

D65 – Hunter Engineering Company

Larry Watson
Ph: (678) 429-3444
Automotive Equipment

D66 – University of Missouri Extension

Andrew Zumwalt
Ph: (573) 884-1690
NEFE High School Financial Planning Materials

D67 – Grimes Horticulture

Bill Eskes
Ph: (417) 581-5880
Horticulture Supplies

D68-70 – Seitz Fundraising

Richard Roller
Ph: (830) 990-4332
Fundraising Products

Booth Number & Company

E71 – Realityworks, Inc.

Andrea Phan
Ph: (715) 858-7117
Realityworks offers Interactive Educational Simulators

E73 – Columbia College

Janette Nichols
Ph: (573) 875-7703
Educational Services

E77-80 – B-Sew Inn Education Division

Josie Baird
Ph: (888) 560-3227
Sewing & Embroidery Equipment/Culinary Products; 3-D printers; Quilting Equipment & Digitizing

E81 – Certiport

Teresa Harry
Ph: (801) 847-3100
Industry-leading Software Certification

E88-89 – Fresh Country Fund Raising

Greg Tucket
Ph: (800) 441-8501
Fund Raising Food Products - Cookies, Desserts, Smoked Meats

E90 – CareerSafeOnline

Natalie Rosser
Ph: (979) 260-0030
Online OSHA 10 Safety Training - Certificate upon Completion

F91 – Universal Technical Institute

Janice Tkaczyk
Ph: (602) 689-3124
Post Secondary Literature

F93 – Tom Evans Fundraising

Cindy Akittiro
Ph: (636) 532-1902
Candy - Novelty Brochure Items - Tumblers

F100 – Missouri State University, College of Business

Kate Haring
Ph: (417) 836-5072
Information regarding College of Business Programs/Promotional Items

Booth Number & Company

F101 – Center for Economic Education - UMKC & MO

LaToya Goree
Ph: (816) 235-2524
Curriculum, Fliers, and Student Events & Competitions

F102 – Missouri Retired Teachers Association

Patti Moeller
Ph: (573) 634-4300
Not-for-Profit

F103 – Public School Retirement System of Missouri

Stacie Verslues
Ph: (573) 638-1024
Retirement Information

F104 – NCCER/Associated Builders & Contractors

Carolyn Laurienzo
Ph: (952) 681-3855
Career and Technical Education Curriculum Solutions

F105 – Lochirco Fundraising

Rick Reuther and Nancy Holdmeyer
Ph: (636) 584-6009
Fruit for Fundraising

F106-107 – Harmison's Hometown Fundraising

Sharon Wheeler
Ph: (515) 991-3214
Fundraising Products, Pizza, Cookies, Snacks

F110 – Missouri Welding Institute

Todd Spangler
Ph: (800) 667-5885
Information on Education - Welding School Catalogs



A very special
"Thank You" to all
our exhibitors. Be
sure to thank them
personally by visiting their
booth and shopping them
first when you get home!



ENHANCE
your leadership skills.

ENGAGE
in lifelong learning.

INCREASE
your earning potential.

Earn an M.S. or
Ed.S. in Career and
Technical Education
Leadership **ONLINE.**

Empower yourself to flourish in a world
of accelerated change with a degree
from the **University of Central Missouri.**

Learning sequences are specifically
designed for teachers, administrators
and industry personnel.

660-543-4452 | ucmo.edu/cte

Current students: Follow us on REMIND (text @ucmctegrad to 660-262-3074) or Twitter (@ucmctegrad). Message and data rates may apply.

Aaron D.
Engineering, Technology and
Project Lead The Way Teacher
Class of 2010-M.S.
Current Ed.S. Student

**UNIVERSITY OF
CENTRAL MISSOURI.**
LEARNING TO A GREATER DEGREE



2015 Missouri ACCTE Conference

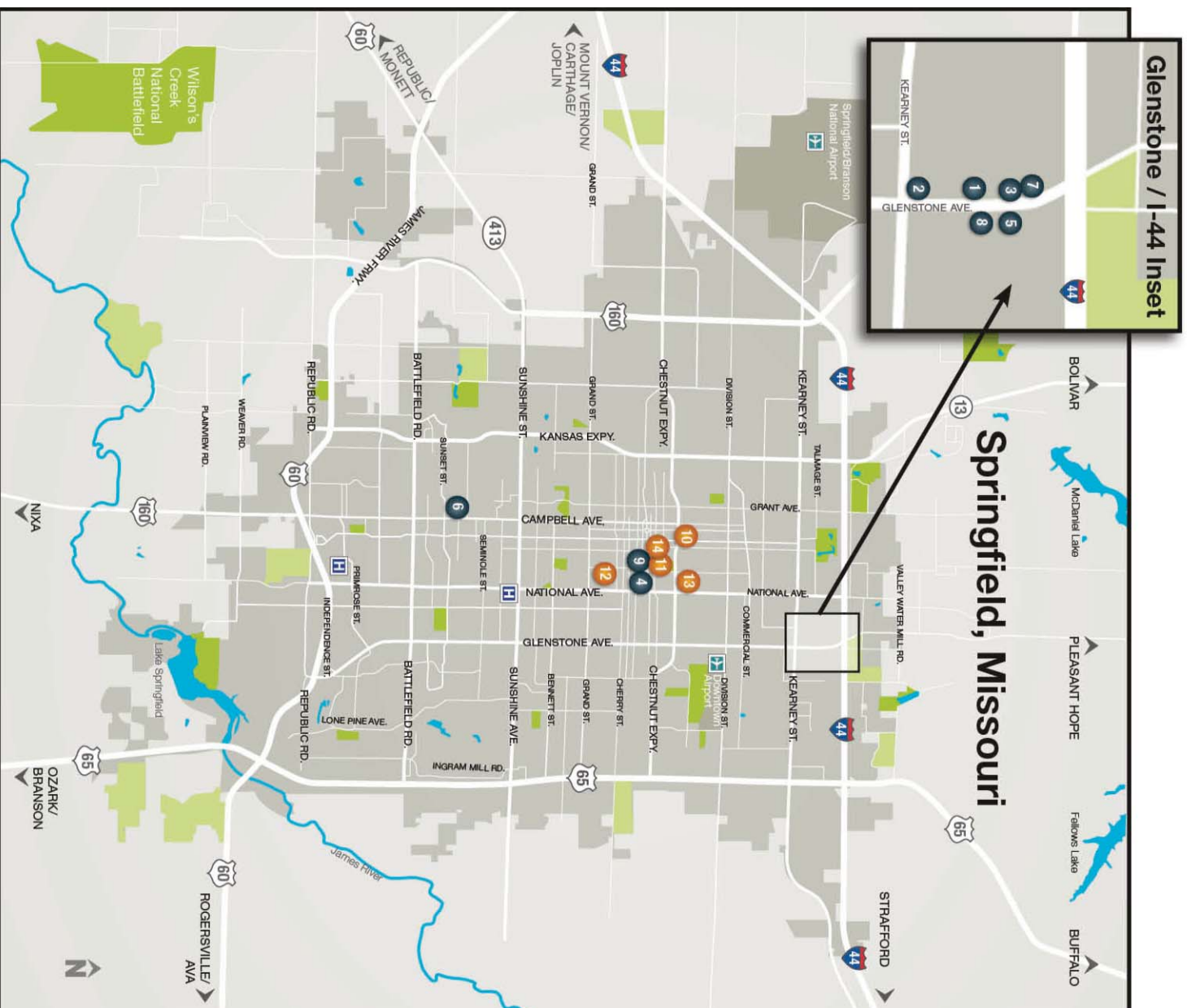
July 20-23, 2015

● Missouri ACCTE Accommodations

1. Best Western Plus Coach House – 2535 N. Glenstone Ave.
2. Doubletree Hotel by Hilton Springfield – 2431 N. Glenstone Ave.
3. Drury Inn & Suites – 2715 N. Glenstone Ave.
4. Holiday Inn Express & Suites – 1117 E. St. Louis St.
5. Holiday Inn Hotel & Suites – 2720 N. Glenstone Ave.
6. La Quinta Inn South – 2535 S. Campbell Ave.
7. Quality Inn & Suites North – 2745 N. Glenstone Ave.
8. Ramada Plaza Hotel & Oasis Convention Center – 2546 N. Glenstone Ave.
9. University Plaza Hotel & Convention Center – 333 S. John Q. Hammons Pkwy.

● Missouri ACCTE Meeting Locations

10. Central High School – 423 E. Central St.
11. Jordan Valley Car Park – 815 E. St. Louis St.
12. Missouri State University – 901 S. National Ave.
13. Ozarks Technical Community College – 933 E. Central St.
14. Springfield Exposition Center – 635 E. St. Louis St.



Visit our website for maps, attractions,
shopping, dining, coupons and more!
www.SpringfieldMO.org